

**STORM SEWER PIPES**

ST-P 1  
10 L.F. OF 27" STORM SEWER CLASS A, TYPE 1 @ 1.50%  
T.B.F. = 1.20 C.Y.

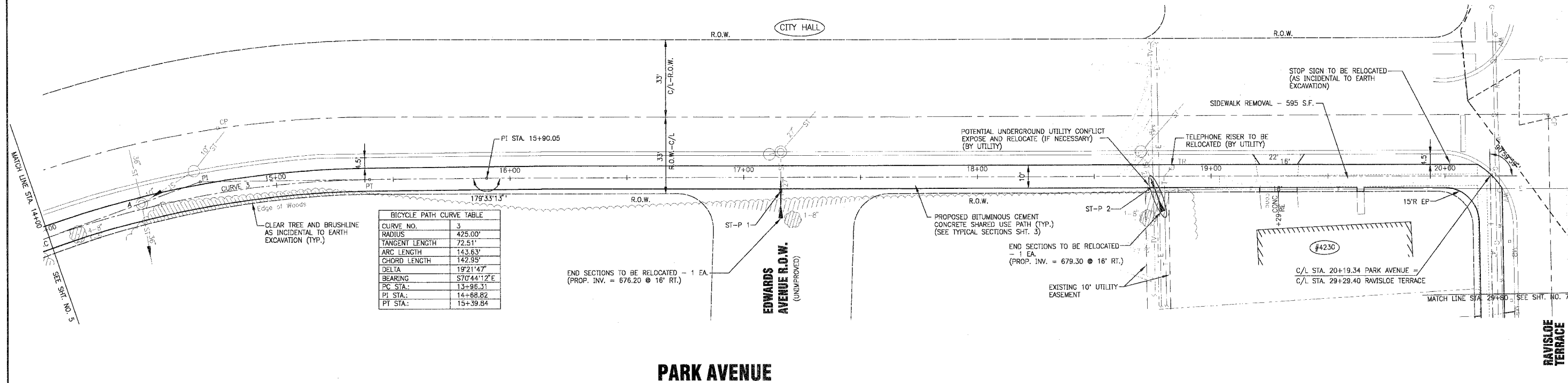
ST-P 2  
10 L.F. OF 21" STORM SEWER CLASS A, TYPE 1 @ 0.88%  
T.B.F. = 0.80 C.Y.

F.A.P. ROUTE NO.	SECTION	COUNTY	TOTAL SHEETS	SHEET NO.
02-00022-00-B1		COOK	26	6
STA. 14+00	TO STA. 20+19.34			
FED. ROAD DIST. NO.	ILLINOIS	FED AID PROJECT CMM-8003 (187)		



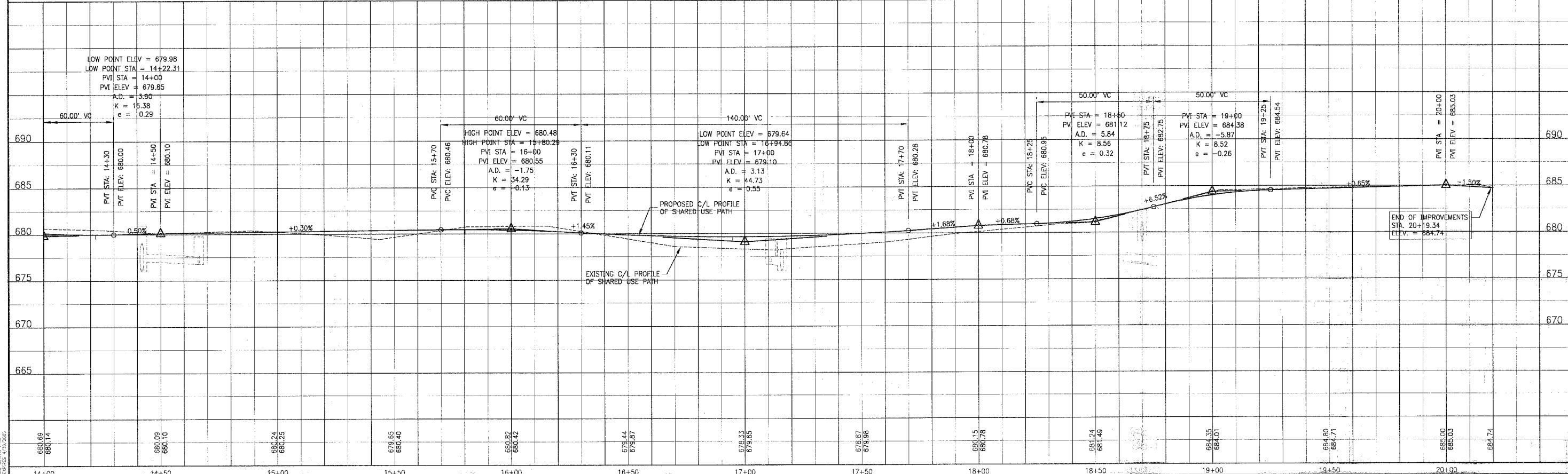
SCALE: 1" = 20'

83742



CURVE NO.	3
RADIUS	425.00'
TANGENT LENGTH	72.51'
ARC LENGTH	143.63'
CHORD LENGTH	142.95'
DELTA	19°21'47"
BEARING	S70°44'12"E
PC STA.	13+96.31
PI STA.	14+68.82
PT STA.	15+39.84

**PARK AVENUE**



CONSULTANTS	REV. NO.	DATE	DESCRIPTION
	1	1-27-04	PER IDOT REVIEW

**BAXTER & WOODMAN**  
Consulting Engineers

Crystal Lake, Illinois 815.459.1200  
Burlington, Wisconsin 262.763.7834  
DeKalb, Illinois 815.787.3111  
Crayslake, Illinois 847.787.3111  
Mokena, Illinois 708.478.2090

**CITY OF COUNTRY CLUB HILLS**  
AMPHITHEATER SHARED USE PATH

**PARK AVENUE**  
STA. 14+00 TO STA. 20+19.34  
PLAN AND PROFILE

DESIGNED BY: NUP  
DRAWN BY: UKB  
CHECKED BY: LDH  
DATE: 10-14-03

SCALE: VERT: 1"=5'  
HORIZ: 1"=20'

PROJECT NO.: 030103  
SHEET NO.: 6 OF 26

© 2003 BY BAXTER & WOODMAN, INC. ALL RIGHTS RESERVED. THIS DRAWING IS THE PROPERTY OF BAXTER & WOODMAN, INC. AND IS NOT TO BE REPRODUCED OR TRANSMITTED IN ANY FORM OR BY ANY MEANS, ELECTRONIC OR MECHANICAL, WITHOUT PERMISSION IN WRITING FROM BAXTER & WOODMAN, INC.

\* REFER TO EQUIPMENT MANUFACTURER'S SHOP DRAWINGS DRAWING FILE: 30-03AP\_N.DWG PLOTTED BY: MDU 28/04/04 14:52