

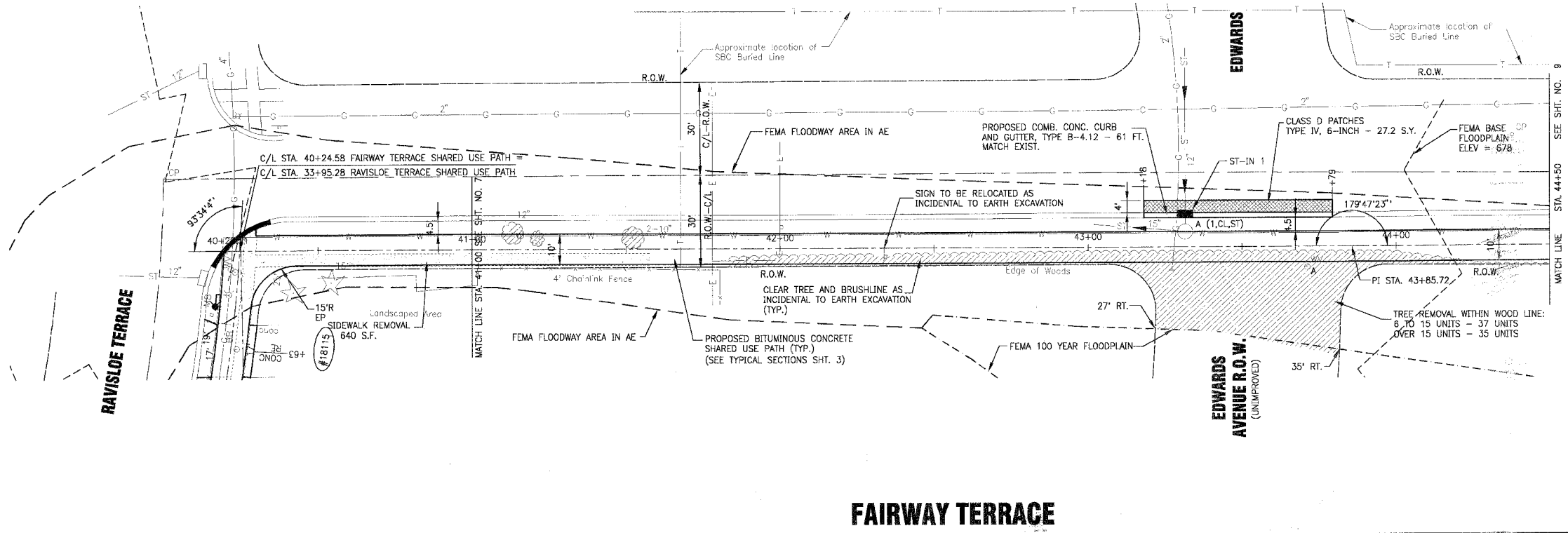
F.A.P. ROUTE NO.	SECTION	COUNTY	TOTAL SHEETS	SHEET NO.
02-00022-00-B1		COOK	26	8
STA. 40+24.58	TO STA. 44+50			
FED. ROAD DIST. NO.	ILLINOIS	FED AID PROJECT CMM-8003 (187)		



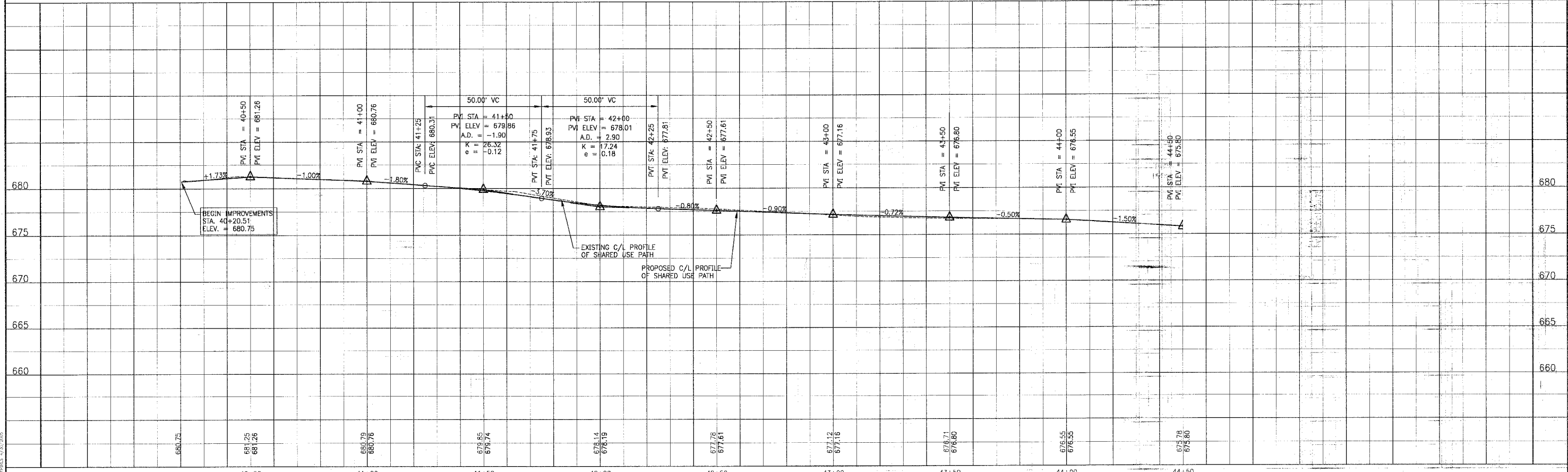
SCALE: 1" = 50'

0312-2

**INLETS**  
 ST-IN 1  
 INLET, TY A, TY I FR, OL  
 STA. 43+31.5, 10' LT.  
 FL = 676.83  
 INV. 673.50 12" NE & NW (EX.)



**FAIRWAY TERRACE**



REV. NO.	DATE	DESCRIPTION
1	1-27-04	PER IDOT REVIEW

CONSULTANTS: BAXTER & WOODMAN  
 DRAWING FILE: 30103AP.N.DWG--  
 PLOTTED BY: MCL 28/JAN/04 14:59

**BAXTER & WOODMAN**  
 Consulting Engineers

Crystal Lake, Illinois 815.459.1280  
 Burlington, Wisconsin 262.763.7834  
 DeKalb, Illinois 815.787.3111  
 Grayslake, Illinois 847.787.3111  
 Mokena, Illinois 708.478.2090

**CITY OF COUNTRY CLUB HILLS**  
**AMPHITHEATER SHARED USE PATH**

**FAIRWAY TERRACE**  
**STA. 40+24.58 TO STA. 44+50**  
**PLAN AND PROFILE**

PROJECT NO.	030103
SHEET NO.	8 OF 26

COPYRIGHT © 2004 BY BAXTER & WOODMAN, INC.  
 ALL RIGHTS RESERVED. NO PART OF THIS DOCUMENT IS TO BE REPRODUCED OR TRANSMITTED IN ANY FORM OR BY ANY MEANS, ELECTRONIC OR MECHANICAL, INCLUDING PHOTOCOPYING, RECORDING, OR BY ANY INFORMATION STORAGE AND RETRIEVAL SYSTEM.