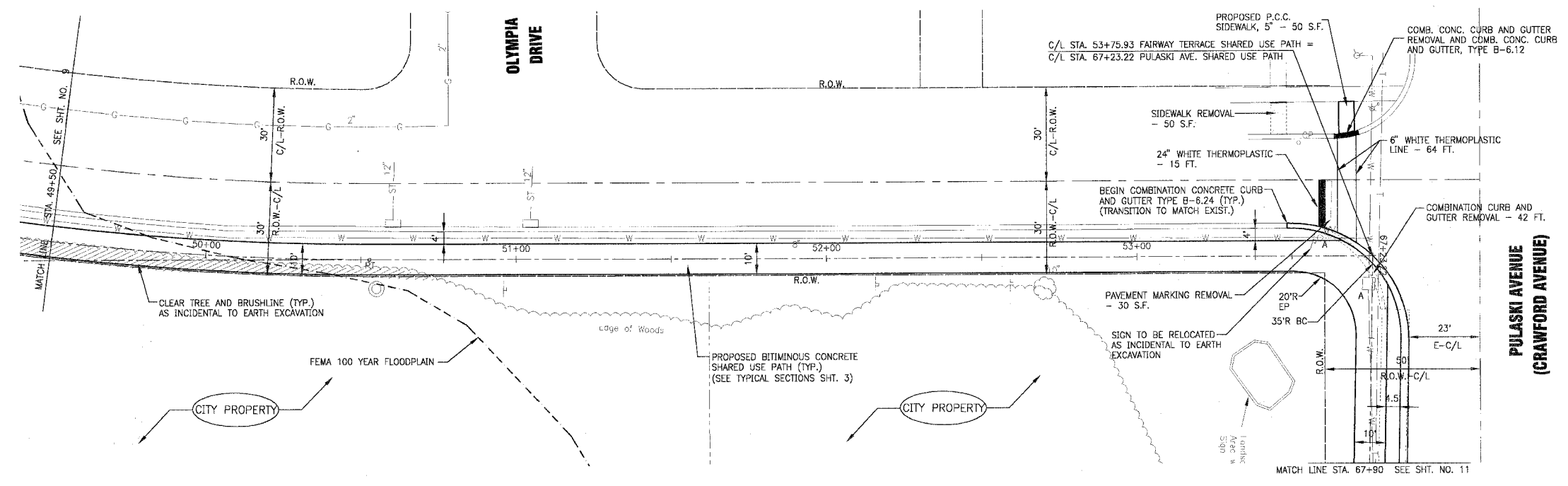


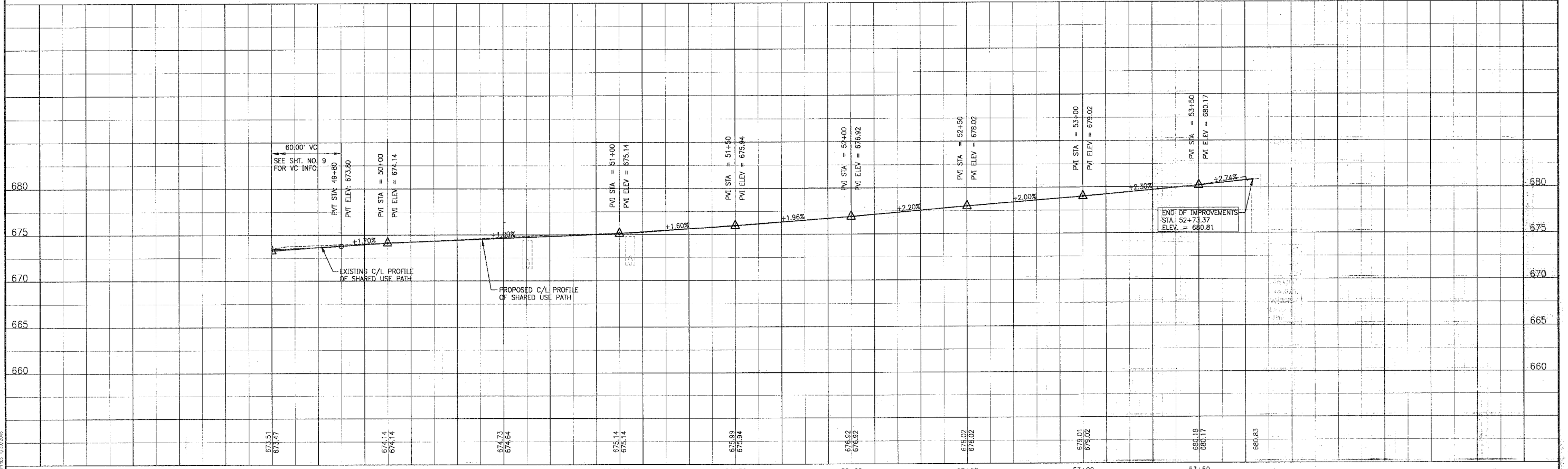
F.A.P. ROUTE NO.	SECTION	COUNTY	TOTAL SHEETS	SHEET NO.
02-00022-00-BT	COOK	26	10	
STA. 49+50	TO STA. 53+75.93			
FED. ROAD DIST. NO.	ILLINOIS	FED AID PROJECT		
C-91-106-02		CMM-8003 (187)		

83742

SCALE: 1" = 20'



### FAIRWAY TERRACE



CONSULTANTS	REV. NO.	DATE	DESCRIPTION	 <b>Baxter &amp; Woodman</b> Crystal Lake, Illinois 815.459.1260 Burlington, Wisconsin 262.763.7834 DeKalb, Illinois 815.787.3111 Craylake, Illinois 847.787.3111 Mokena, Illinois 708.478.2090	<b>CITY OF COUNTRY CLUB HILLS</b> <b>AMPHITHEATER SHARED USE PATH</b>	<b>FAIRWAY TERRACE</b> <b>STA. 49+50 TO STA. 53+75.93</b> <b>PLAN AND PROFILE</b>	DESIGNED BY	SCALE: VERT. 1" = 5'
	1	01-27-04	PER IDOT REVIEW				NJP	HORIZ. 1" = 20'
DRAWING FILE: 30703APLN.DWG				PLOTTED BY: MCU 27/JAN/04 19:31	CHECKED BY: LJK SHEET NO. 10 OF 26	PROJECT NO. 030103	DATE	
* REFER TO EQUIPMENT MANUFACTURER'S SHOP DRAWINGS							10-14-03	