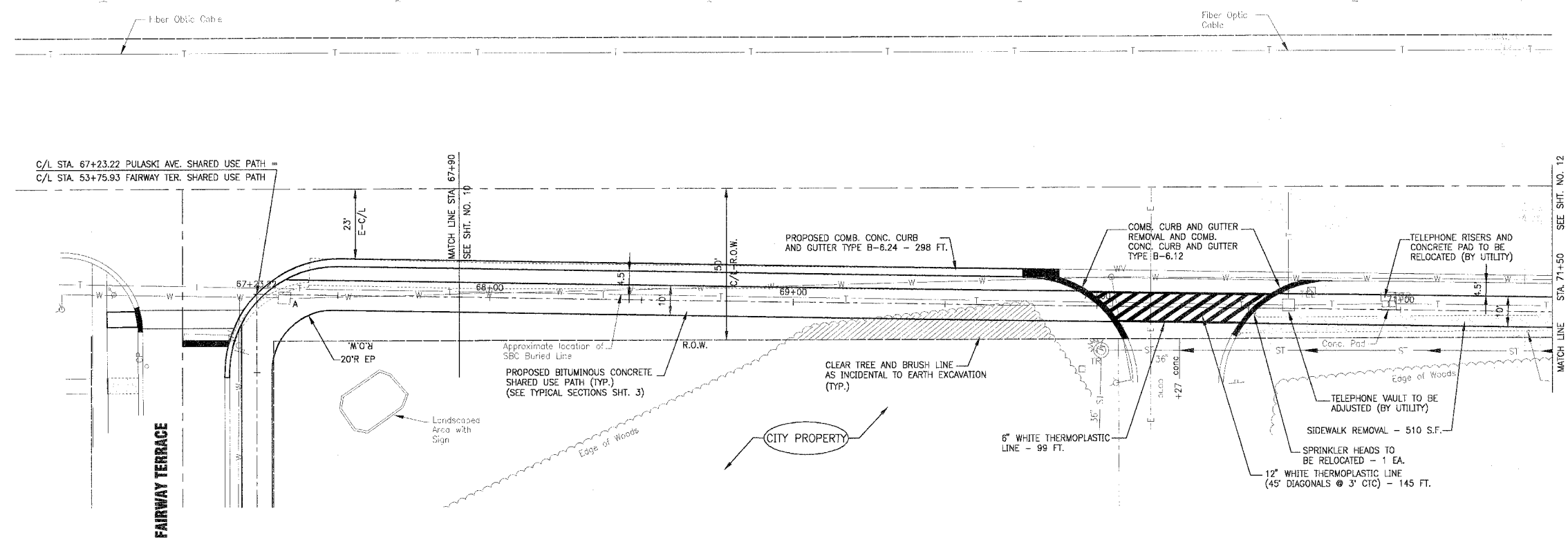




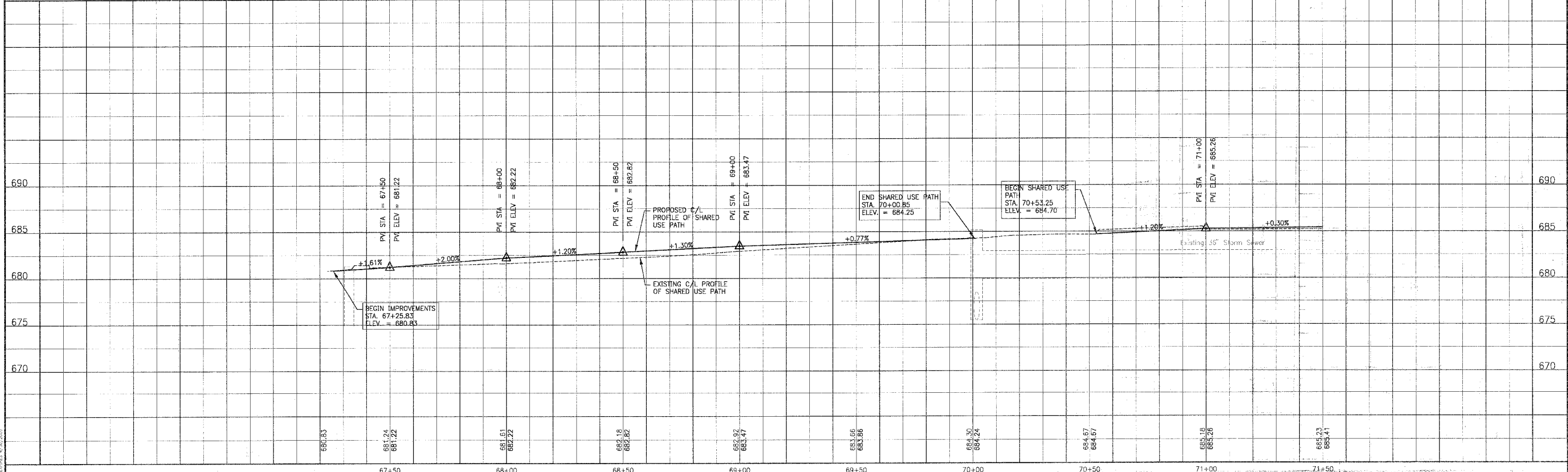
SCALE: 1" = 20'

F.A.P. ROUTE NO.	SECTION	COUNTY	TOTAL SHEETS	SHEET NO.
—	02-00022-00-B1	COOK	26	11
STA. 67+23.22	TO STA. 71+50			
FED. ROAD DIST. NO.	ILLINOIS	FED AID PROJECT		
C-91-106-02		CMM-8003 (187)		

89742



### PULASKI (CRAWFORD) AVENUE



COPYRIGHT © 2004 BY BAXTER & WOODMAN, INC. ALL RIGHTS RESERVED. PROJECT NO. 030103, SHEET NO. 11 OF 26

CONSULTANTS	REV. NO.	DATE	DESCRIPTION
	1	01-27-04	PER IDOT REVIEW

DRAWING FILE: 30103AFLN.DWC PLOTTED BY: MCJ 28/AN/04 14:56

**BAXTER & WOODMAN**  
Consulting Engineers

*Baxter & Woodman*  
Crystal Lake, Illinois 815.459.1260  
Durlington, Wisconsin 262.763.7834  
DeKalb, Illinois 815.787.3111  
Craigslist, Illinois 847.787.3111  
Mokena, Illinois 708.478.2090

**CITY OF COUNTRY CLUB HILLS**  
AMPHITHEATER SHARED USE PATH

**PULASKI (CRAWFORD) AVENUE**  
STA. 67+23.22 TO STA. 71+50  
PLAN AND PROFILE

DESIGNED BY	SCALE VERT: 1"=5'
NJP	HORIZ: 1"=20'
DRAWN BY	PROJECT NO.
UKB	030103
CHECKED BY	SHEET NO.
LDH	
DATE	
10-14-03	<b>11 OF 26</b>