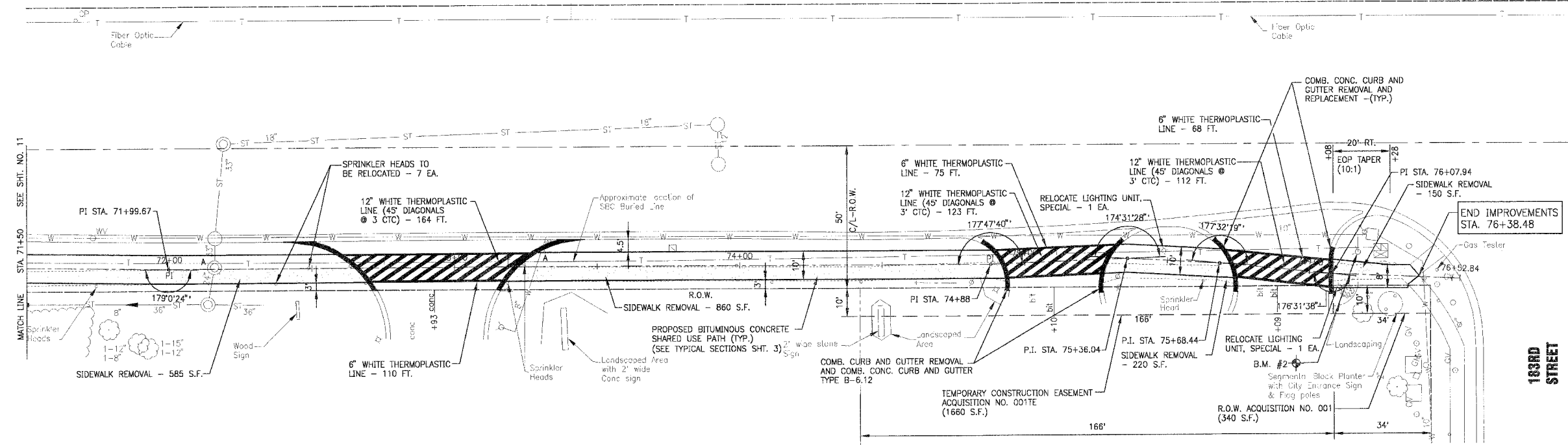
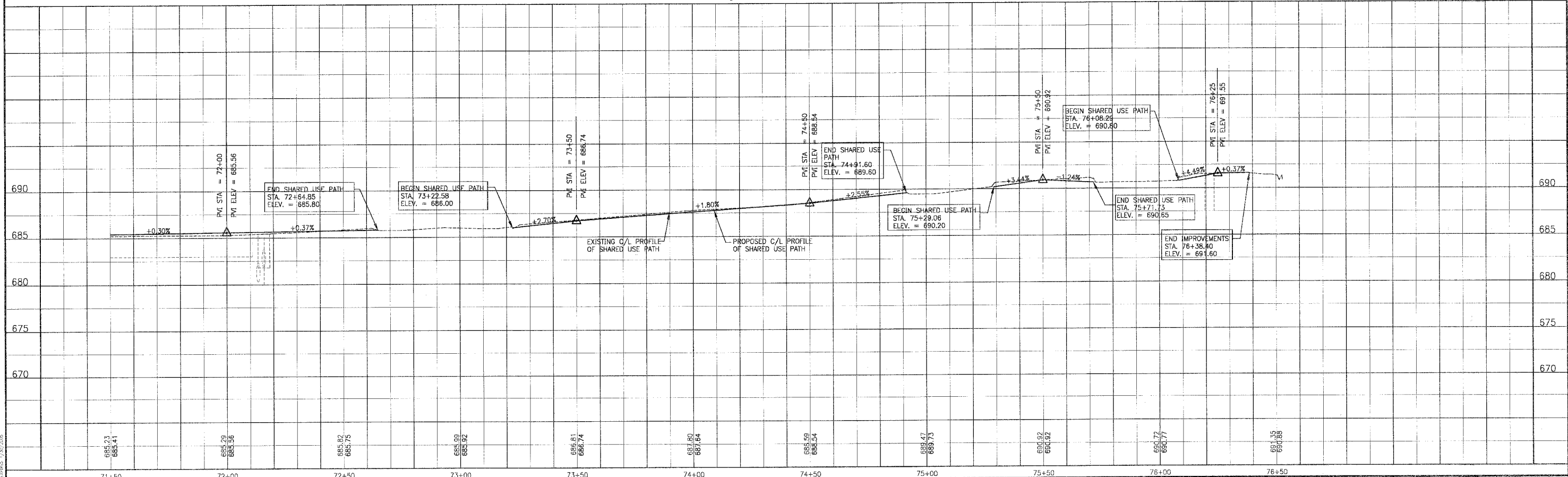


83742



PULASKI (CRAWFORD) AVENUE



REV. NO.	DATE	DESCRIPTION
1	01-27-04	PER IDOT REVIEW

CONSULTANTS: BAXTER & WOODMAN

DRAWING FILE: 30103APLN.DWG PLOTTED BY: VCJ 28/JAN/04 11:59

BAXTER & WOODMAN
Consulting Engineers

Crystal Lake, Illinois 815.459.1260
Burlington, Wisconsin 262.763.7894
DeKalb, Illinois 815.787.3111
Crestlake, Illinois 847.787.3111
Mokena, Illinois 708.478.2090

CITY OF COUNTRY CLUB HILLS
AMPHITHEATER SHARED USE PATH

PULASKI AVENUE
STA. 71+50 TO STA. 76+38.48
PLAN AND PROFILE

DESIGNED BY: NJP	SCALE VERT: 1"=5'
DRAWN BY: LUKB	HORIZ: 1"=20'
CHECKED BY: LDH	PROJECT NO.: 030103
DATE: 10-14-03	SHEET NO.: 12 OF 26

* REFER TO EQUIPMENT MANUFACTURER'S SHOP DRAWINGS