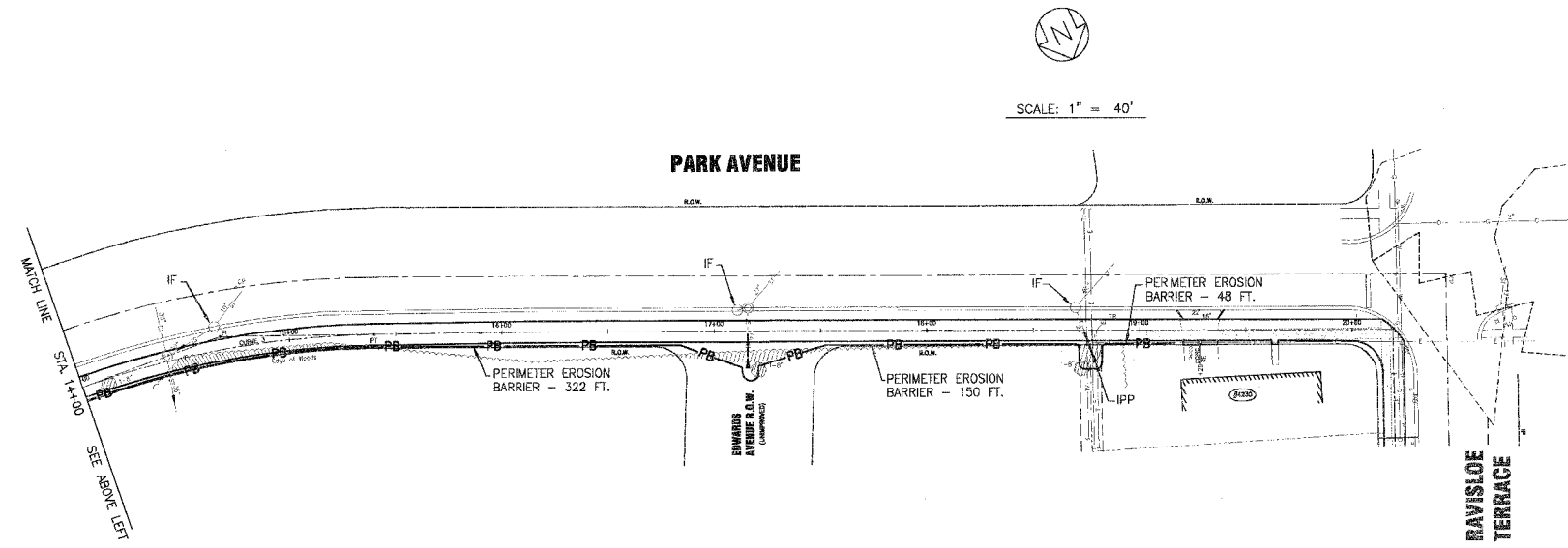
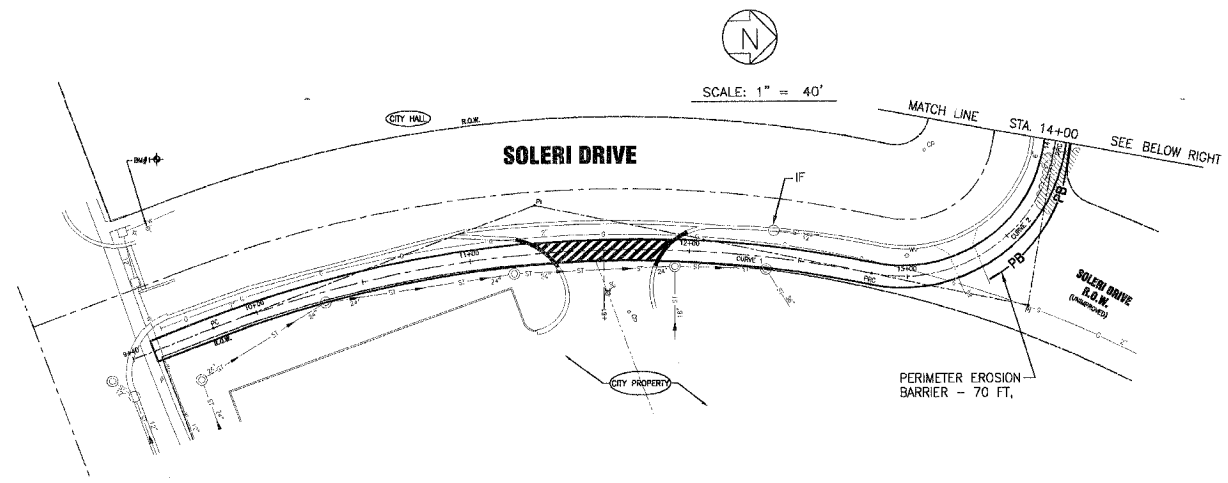


F.A.P. ROUTE NO.	SECTION	COUNTY	TOTAL SHEETS	SHEET NO.
02-00022-00-B		COOK	26	13
STA.	TO STA.		FED. ROAD DIST. NO.	ILLINOIS
			C-91-106-02	FED AID PROJECT CMM-8003 (187)

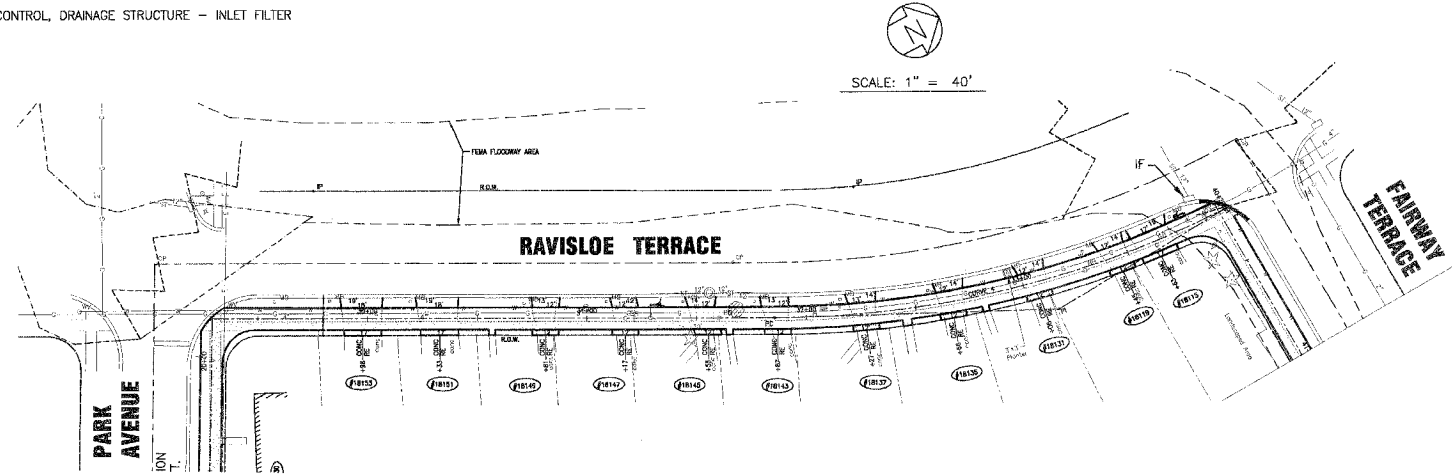
83742



LEGEND

DC	TEMPORARY DITCH CHECKS ROLLED EXCELSIOR
PB	PERIMETER EROSION BARRIER
IPP	INLET AND PIPE PROTECTION
IF	SEDIMENT CONTROL, DRAINAGE STRUCTURE - INLET FILTER

- SEDIMENTATION AND EROSION CONTROL NOTES**
- SOIL EROSION AND SEDIMENT CONTROL FEATURES SHALL BE CONSTRUCTED PRIOR TO THE COMMENCEMENT OF UPLAND DISTURBANCE.
 - ALL STORM SEWER FACILITIES THAT ARE OR WILL BE FUNCTIONING DURING CONSTRUCTION SHALL BE PROTECTED, FILTERED, OR OTHERWISE TREATED TO REMOVE SEDIMENT.
 - ALL TEMPORARY AND PERMANENT EROSION CONTROL MEASURES MUST BE MAINTAINED AND REPAIRED AS NEEDED. THE GENERAL CONTRACTOR WILL BE RESPONSIBLE FOR INSPECTION AND REPAIR DURING CONSTRUCTION.
 - INLET AND PIPE PROTECTION SHALL BE PLACED AROUND ALL DRAINAGE STRUCTURES WITH OPEN GRATES OUTSIDE BACK OF CURB IN ACCORDANCE WITH SECTION 280 OF THE STANDARD SPECIFICATIONS AND THE LATEST VERSION OF STANDARD 280001.



SCHEDULE OF EROSION CONTROL QUANTITIES

DESCRIPTION	UNIT	QUANTITY
PERIMETER EROSION BARRIER (PB)	FOOT	2,210
INLET AND PIPE PROTECTION (IPP)	EACH	1
SEDIMENT CONTROL, DRAINAGE STRUCTURE - INLET FILTER (IF)	EACH	9

COPYRIGHT © 2004, BY BAXTER & WOODMAN, INC.
 STATE OF ILLINOIS PROFESSIONAL ENGINEERING REGISTRATION BOARD
 LICENSE NO. 021-000000-000000-000000

CONSULTANTS	REV. NO.	DATE	DESCRIPTION
	1	01-27-04	PER IDOT REVIEW

DRAWING FILE: 30103-EROS.DWG PLOTTED BY: N.J.P. 28/JAN/04 12:00



Baxter & Woodman
 Crystal Lake, Illinois 815.459.1260
 Burlington, Wisconsin 262.763.7934
 DeKalb, Illinois 815.787.3111
 Crystal Lake, Illinois 847.787.3111
 Mokena, Illinois 708.478.2090

**CITY OF COUNTRY CLUB HILLS
 AMPHITHEATER SHARED USE PATH**

EROSION CONTROL PLAN

DESIGNED BY N.J.P.	SCALE HORIZ: 1"=40'
DRAWN BY UKB	PROJECT NO. 030103
CHECKED BY LDH	SHEET NO.
DATE 10-14-03	13 OF 26