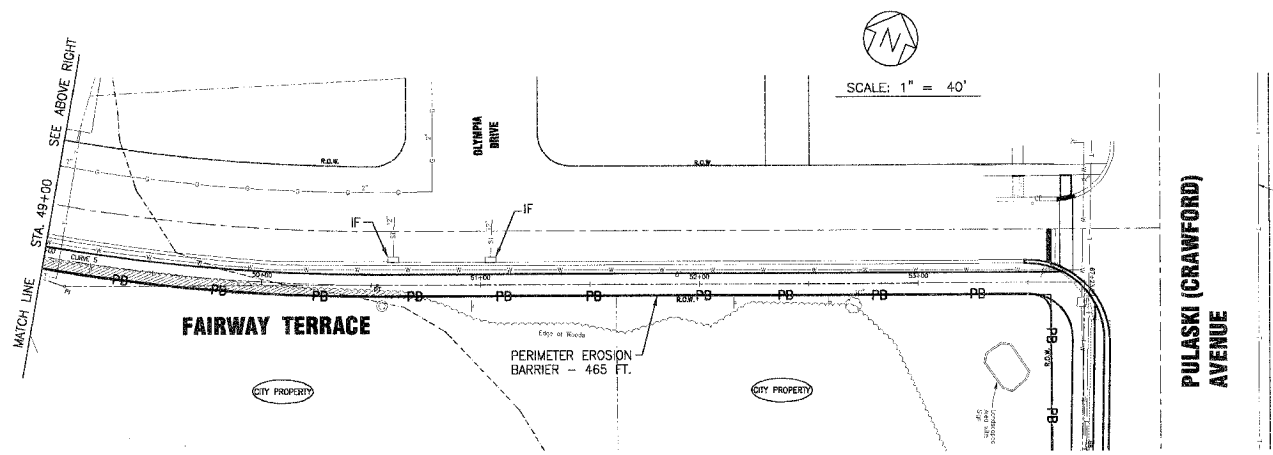
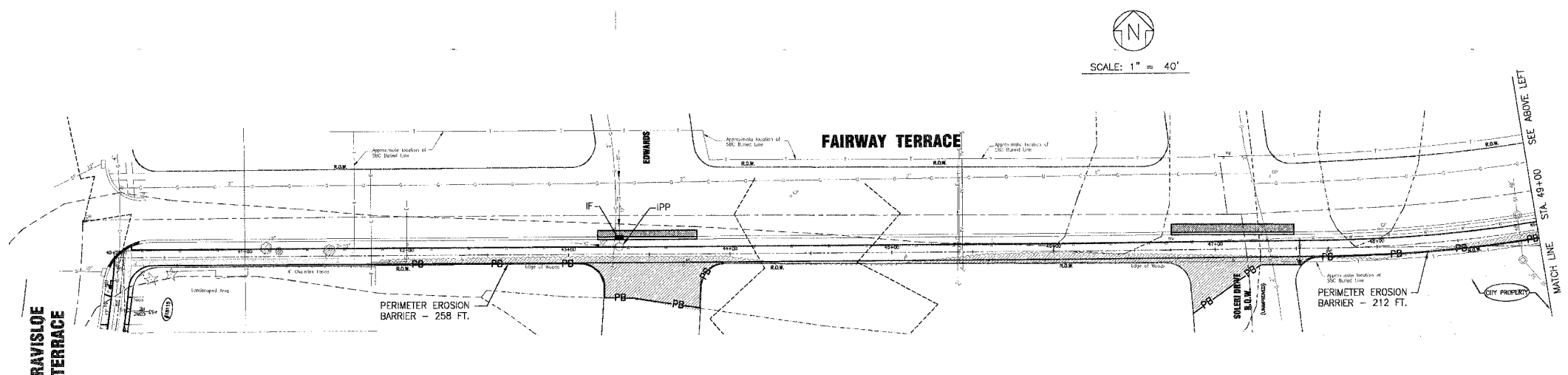
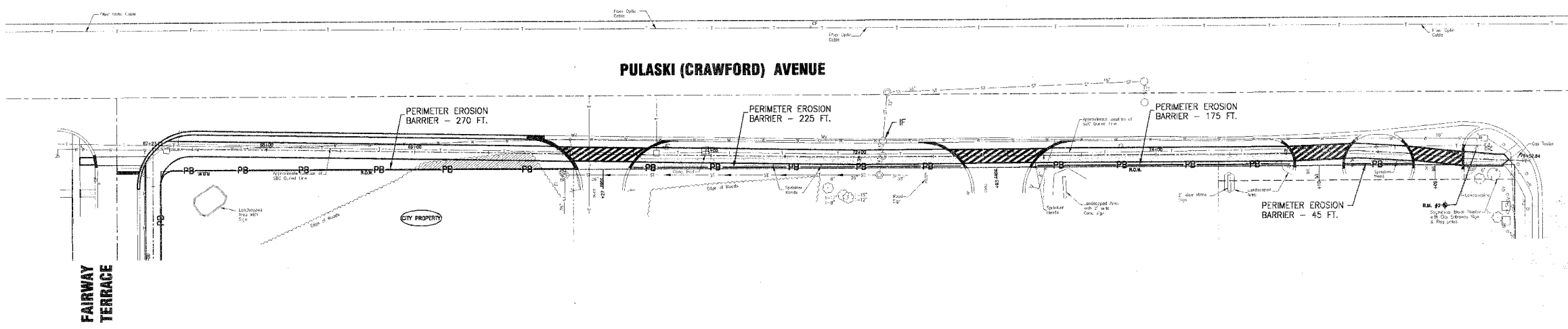


F.A.P. ROUTE NO.	SECTION	COUNTY	TOTAL SHEETS	SHEET NO.
-	02-00022-00-01	COOK	26	14
STA.	TO STA.			
FED. ROAD DIST. NO.	ILLINOIS	FED AID PROJECT CMM-8003 (187)		
C-91-106-02		83742		



**LEGEND**

- DC ——— TEMPORARY DITCH CHECKS ROLLED EXCELSIOR
- PB ——— PERIMETER EROSION BARRIER
- IPP ——— INLET AND PIPE PROTECTION
- IF ——— SEDIMENT CONTROL DRAINAGE STRUCTURE - INLET FILTER



CONSULTANT: BAXTER & WOODMAN, INC.  
 PROJECT: AMPHITHEATER SHARED USE PATH  
 DRAWING NO.: 30103-EROS.DWG  
 DATE: 2/2/04

CONSULTANTS	REV. NO.	DATE	DESCRIPTION
	1	01-27-04	PER IDOT REVIEW

DRAWING FILE: 30103-EROS.DWG PLOTTED BY: NJP 28/JAN/04 12:00

**BAXTER & WOODMAN**  
 Consulting Engineers

*Baxter & Woodman*  
 Crystal Lake, Illinois 815.469.1260  
 Burlington, Wisconsin 262.763.7834  
 DeKalb, Illinois 815.787.3111  
 Craylake, Illinois 847.787.3111  
 Mokena, Illinois 708.478.2090

**CITY OF COUNTRY CLUB HILLS**  
**AMPHITHEATER SHARED USE PATH**

**EROSION CONTROL PLAN**

DESIGNED BY NJP	SCALE HORIZ: 1"=40'
DRAWN BY UKB	PROJECT NO. 030103
CHECKED BY LDH	SHEET NO.
DATE 10-14-03	<b>14 OF 26</b>