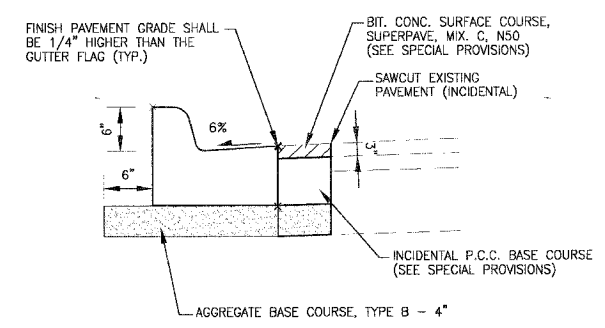
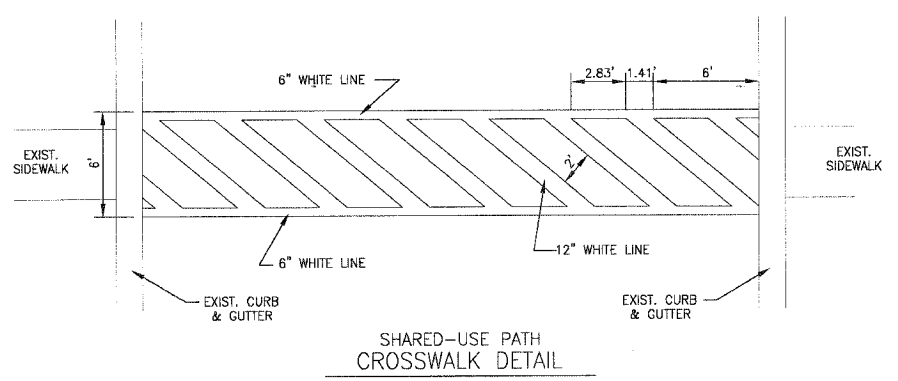


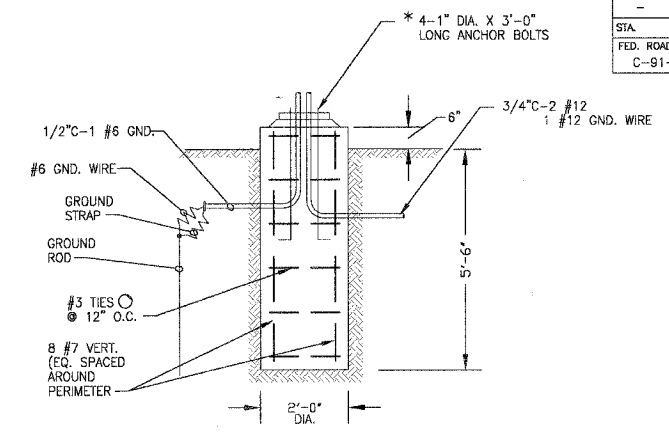
F.A.P. ROUTE NO.	SECTION	COUNTY	TOTAL SHEETS	SHEET NO.
02-00022-00-BT	COOK	26	18	
STA.	TO STA.			
FED. ROAD DIST. NO.	ILLINOIS	FED AID PROJECT CMM-8003 (187)		

83742



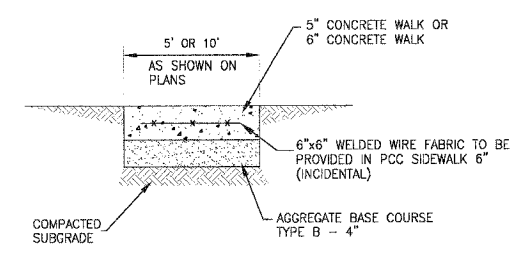
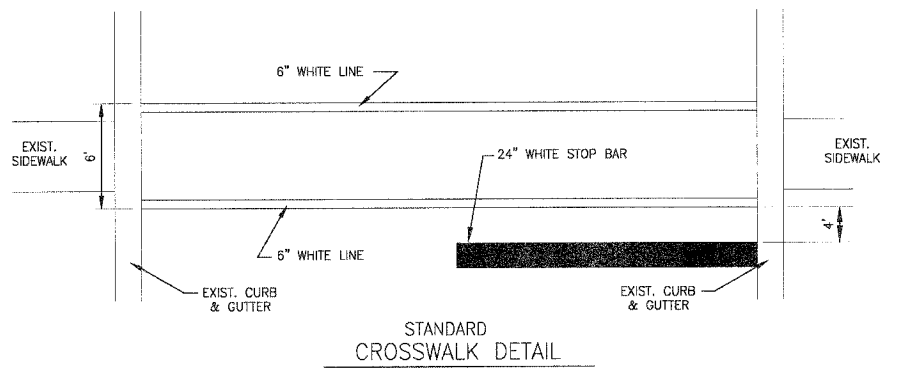
NOTE: GEOMETRIC DIMENSIONS OF COMB. CONC. CURB AND GUTTER SHALL BE IN ACCORDANCE WITH IDOT STANDARD 606001-01

DETAIL OF COMBINATION CONCRETE CURB & GUTTER
NO SCALE



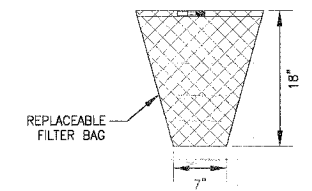
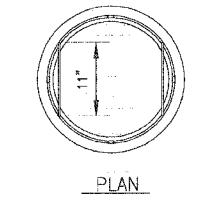
NOTE: ACTUAL FOUNDATION SHOULD MATCH EXISTING POLE TO BE RELOCATED. CONTRACTOR SHALL VERIFY EXISTING FOUNDATION DESIGN PRIOR TO CONSTRUCTING NEW FOUNDATION

CONCRETE LIGHT POLE FOUNDATION DETAIL
NO SCALE



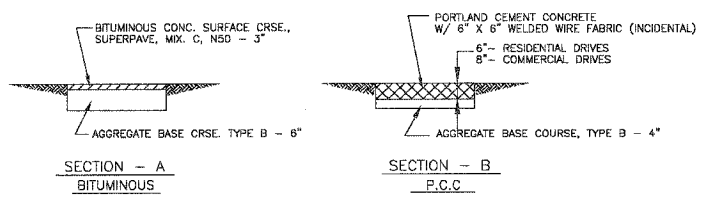
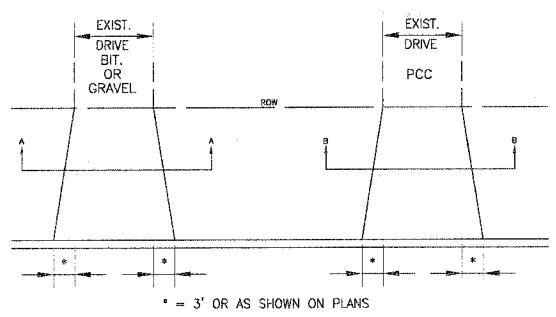
NOTE: PROVIDE FIBER 3/4" EXPANSION JOINTS WHERE NEW SIDEWALK MEETS EXISTING AND @ 50' O.C. MAX. AND PROVIDE CONTROL JOINTS @ 5' O.C.

P.C.C. SIDEWALK 5", P.C.C. SIDEWALK 6"

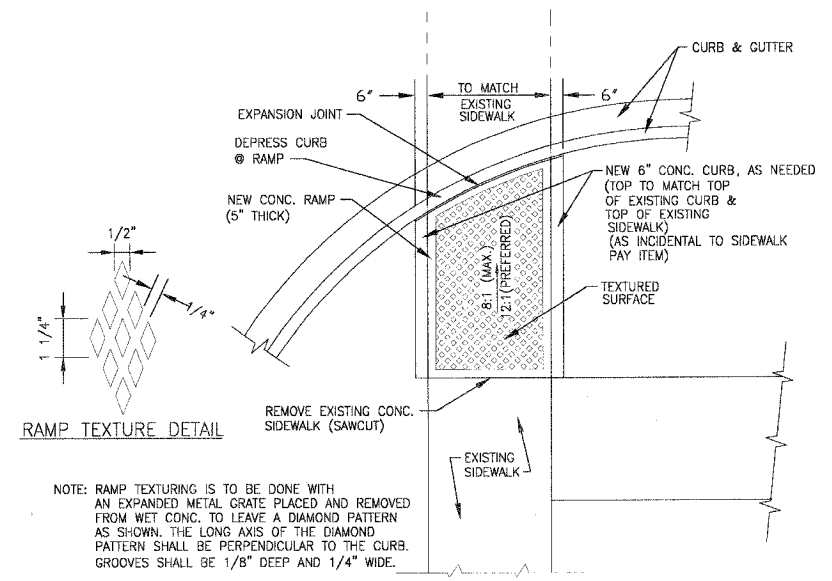


GENERAL NOTES:
FRAME: TOP RING CONSTRUCTED FROM 1 1/4" x 1 1/4" x 1/8" ANGLE. BASE RING CONSTRUCTED OF 1 1/2" x 1/2" x 1/8" CHANNEL. HANDLES & SUSPENSION BRACKETS CONSTRUCTED FROM 1/4" x 1 1/4" FLAT. ALL STEEL CONFORMING TO ASTM-A36.
REPLACEABLE BAG: CONSTRUCTED FROM 4 OZ./SQ. YD. NON-WOVEN POLYPROPYLENE GEOTEXTILE REINFORCED WITH POLYESTER MESH. CONNECTED TO BASE RING WITH STAINLESS STEEL STRAP & LOCK.

INLET PROTECTION INLET FILTER
NO SCALE



DRIVEWAY PAVEMENT DETAIL



NOTE: RAMP TEXTURING IS TO BE DONE WITH AN EXPANDED METAL GRATE PLACED AND REMOVED FROM WET CONC. TO LEAVE A DIAMOND PATTERN AS SHOWN. THE LONG AXIS OF THE DIAMOND PATTERN SHALL BE PERPENDICULAR TO THE CURB. GROOVES SHALL BE 1/8" DEEP AND 1/4" WIDE.

SIDEWALK RAMP DETAIL
NO SCALE

COPYRIGHT © 2004 BY BAXTER & WOODMAN, INC. STATE OF ILLINOIS - PROFESSIONAL SEAL OR FEEL FREE TO USE FOR PROJECTS 01/27/04

CONSULTANTS	REV. NO.	DATE	DESCRIPTION
	1	01-27-04	PER IDOT REVIEW

DRAWING FILE: 30103-SH18.DWG PLOTTED BY: NLP 28/JAN/04 14:45

BAXTER & WOODMAN
Consulting Engineers

Baxter & Woodman
Crystal Lake, Illinois 815.459.1280
Burlington, Wisconsin 262.763.7894
DeKalb, Illinois 815.787.3111
Crawfordsville, Illinois 847.787.3111
Mokena, Illinois 708.478.2090

CITY OF COUNTRY CLUB HILLS
AMPHITHEATER SHARED USE PATH

MISCELLANEOUS DETAILS

DESIGNED BY	NLP	SCALE	NONE
DRAWN BY	LIK9	PROJECT NO.	030103
CHECKED BY	LDL	SHEET NO.	
DATE	10-14-03	18 OF 26	