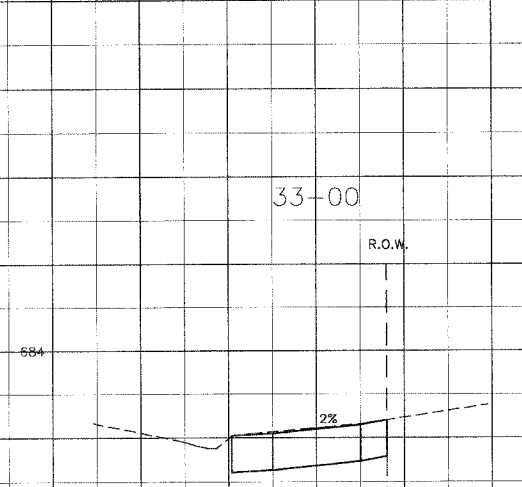
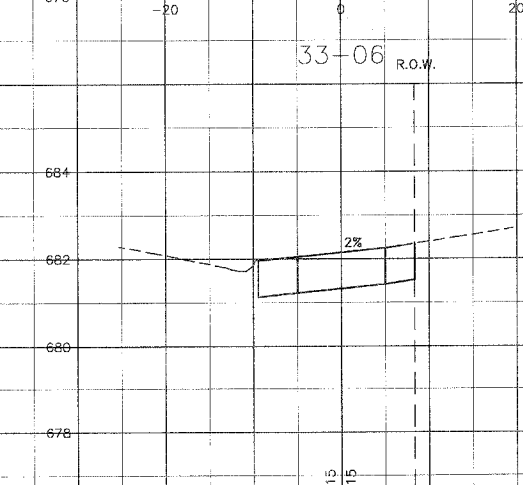
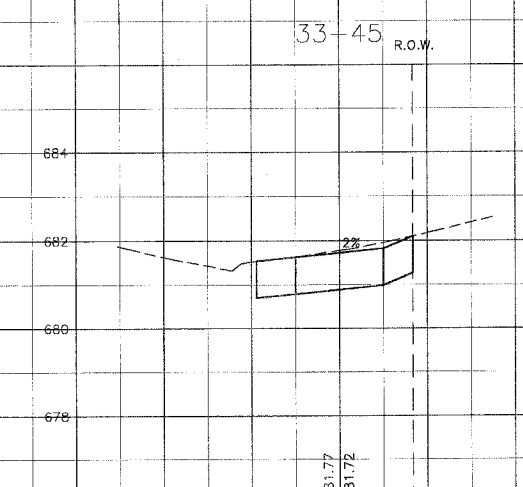
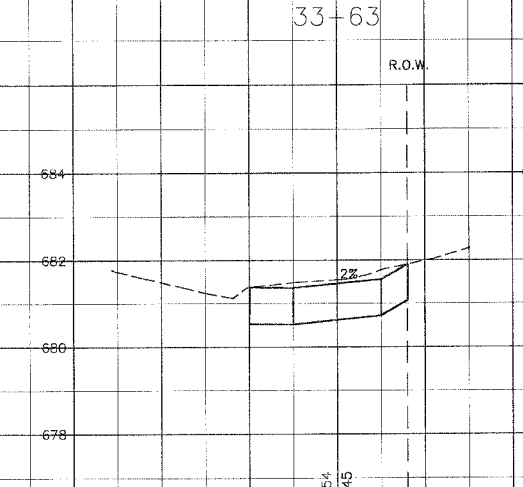
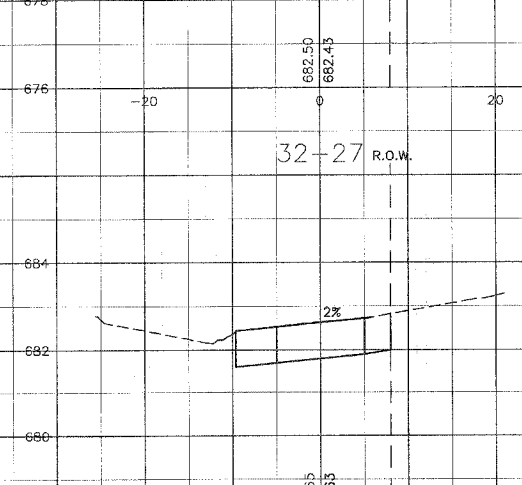
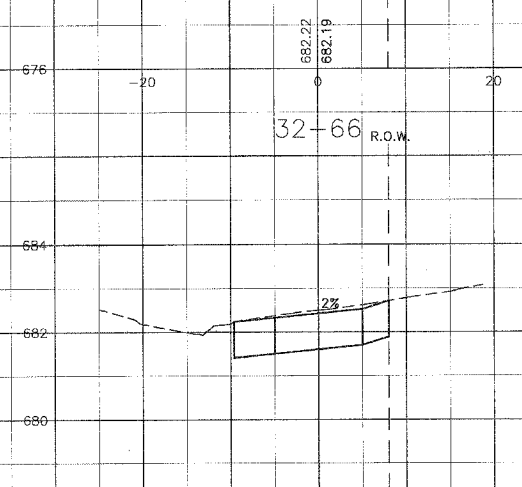


F.A.R. ROUTE NO.	SECTION	COUNTY	TOTAL SHEETS	SHEET NO.
02-00022-00-BT	COOK		26	22
STA. 32+37	TO STA. 33+63			
FED. ROAD DIST. NO.	ILLINOIS	FED AID PROJECT		
C-91-106-02		CMM-8003 (187)		
33742				



EARTH EX.	8.31	S.F.
FILL	0.00	S.F.
EMBANK.	0.13	S.F.
TOPSOIL EX.	6.01	S.F.
UNDERCUT	0.00	S.F.



PREPARED BY: BAXTER & WOODMAN, INC.
 1100 N. WILSON AVENUE, SUITE 100
 DEERFIELD, ILLINOIS 60015

CONSULTANTS	REV. NO.	DATE	DESCRIPTION
	1	1-27-04	PER IDOT REVIEW

DRAWING FILE: 30103-rs.dwg PLOTTED BY: NJP 1-27-04 10:45

BAXTER & WOODMAN
 Consulting Engineers

Baxter & Woodman
 Crystal Lake, Illinois 815.459.1260
 Burlington, Wisconsin 262.763.7834
 DeKalb, Illinois 815.787.3111
 Craystone, Illinois 847.787.3111
 Mokena, Illinois 708.478.2090

CITY OF COUNTRY CLUB HILLS
AMPHITHEATER SHARED USE PATH

CROSS SECTIONS
RAVISLOE TERRACE
STA. 32+27 TO STA. 33+63

DESIGNED BY	SCALE
NJP	VERT: 1"=2'
DRAWN BY	HORIZ: 1"=10'
UKB	PROJECT NO.
CHECKED BY	030103
LDH	SHEET NO.
DATE	22 OF 26
10-14-03	