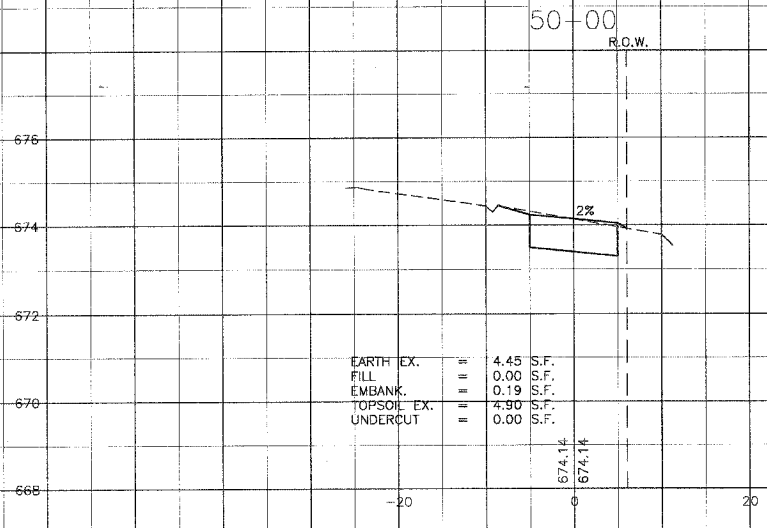
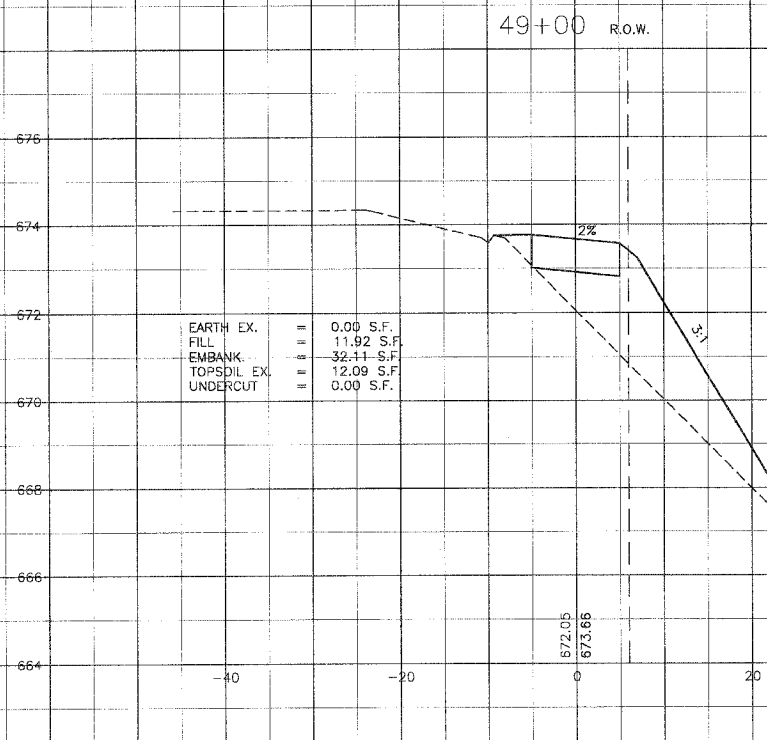


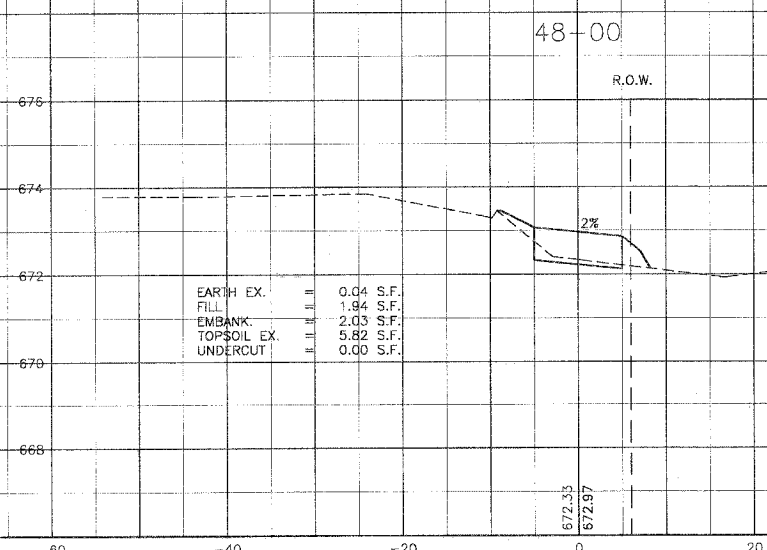
F.A.R. ROUTE NO.	SECTION	COUNTY	TOTAL SHEETS	SHEET NO.
02-00022-00-B1	COOK	26	24	
STA. 48+00	TO STA. 53+00			
FED. ROAD DIST. NO.	ILLINOIS	FED AID PROJECT		
C-91-106-02		CMM-8003 (187)		
83742				



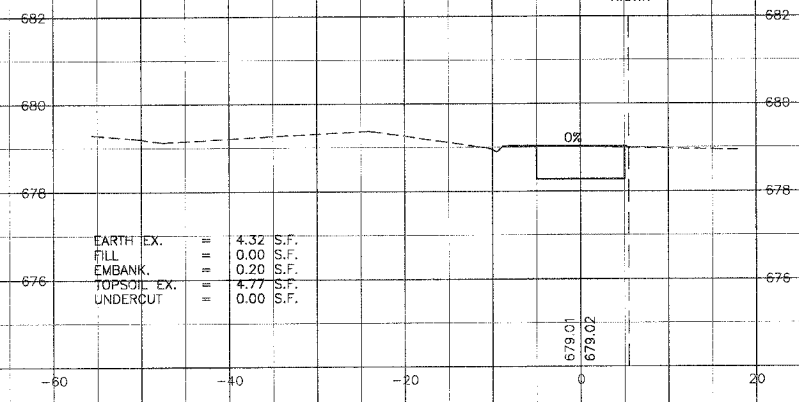
EARTH EX.	=	4.45	S.F.
FILL	=	0.00	S.F.
EMBANK.	=	0.19	S.F.
TOPSOIL EX.	=	4.90	S.F.
UNDERCUT	=	0.00	S.F.



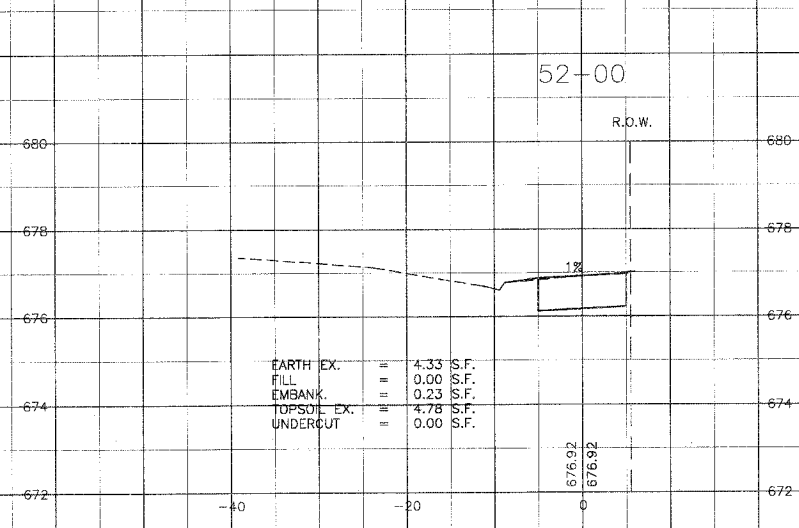
EARTH EX.	=	0.00	S.F.
FILL	=	11.92	S.F.
EMBANK.	=	32.11	S.F.
TOPSOIL EX.	=	12.09	S.F.
UNDERCUT	=	0.00	S.F.



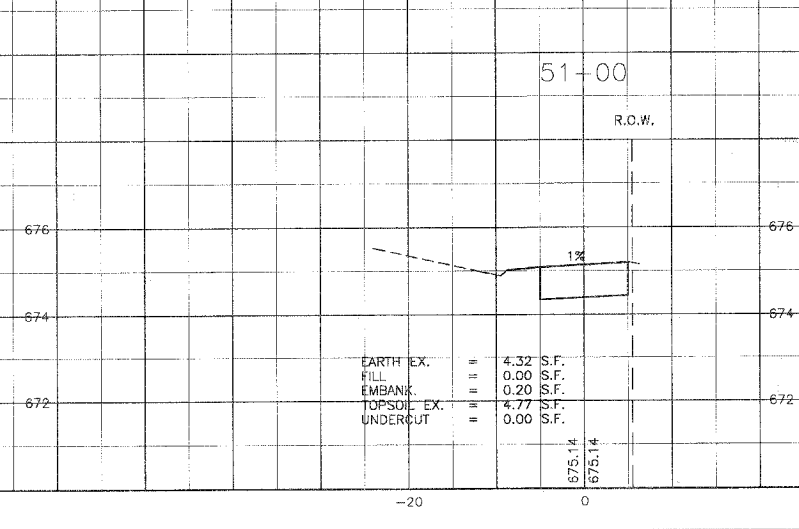
EARTH EX.	=	0.04	S.F.
FILL	=	1.94	S.F.
EMBANK.	=	2.03	S.F.
TOPSOIL EX.	=	5.82	S.F.
UNDERCUT	=	0.00	S.F.



EARTH EX.	=	4.32	S.F.
FILL	=	0.00	S.F.
EMBANK.	=	0.20	S.F.
TOPSOIL EX.	=	4.77	S.F.
UNDERCUT	=	0.00	S.F.



EARTH EX.	=	4.33	S.F.
FILL	=	0.00	S.F.
EMBANK.	=	0.23	S.F.
TOPSOIL EX.	=	4.78	S.F.
UNDERCUT	=	0.00	S.F.



EARTH EX.	=	4.32	S.F.
FILL	=	0.00	S.F.
EMBANK.	=	0.20	S.F.
TOPSOIL EX.	=	4.77	S.F.
UNDERCUT	=	0.00	S.F.

CONSULTANTS	REV. NO.	DATE	DESCRIPTION
	1	1-27-04	PER IDOT REVIEW

BAKTER & WOODMAN
 Consulting Engineers

Baxter & Woodman
 Crystal Lake, Illinois 815.459.1260
 Burlington, Wisconsin 262.763.7834
 DeKalb, Illinois 815.787.3111
 Crayslake, Illinois 847.787.3111
 Mokena, Illinois 708.478.2090

CITY OF COUNTRY CLUB HILLS
AMPHITHEATER SHARED USE PATH

CROSS SECTIONS
FAIRWAY TERRACE
STA. 48+00 TO STA. 53+00

DESIGNED BY	SCALE VERT: 1"=2'
NJP	HORIZ: 1"=10'
DRAWN BY	PROJECT NO.
UKB	030103
CHECKED BY	SHEET NO.
LDH	24 OF 26
DATE	
10-14-03	

CONSULTANT: BAKTER & WOODMAN, INC.
 1000 W. ALDRICH ST., DEKALB, ILL. 60151
 PHONE: 815-787-3111 FAX: 815-787-3112