

| F.A.P. RTE. | SECTION | COUNTY | TOTAL SHEETS | SHEET NO. |
|----------------------------|----------------|----------|-----------------|-----------|
| 1283 | 02-00059-00-BR | KANE | 51 | 11 |
| STA. 111+50 TO STA. 116+22 | | | | |
| FED. ROAD DIST. NO. 1 | | ILLINOIS | HIGHWAY PROJECT | |

CONTRACT #: 83783

NOTES

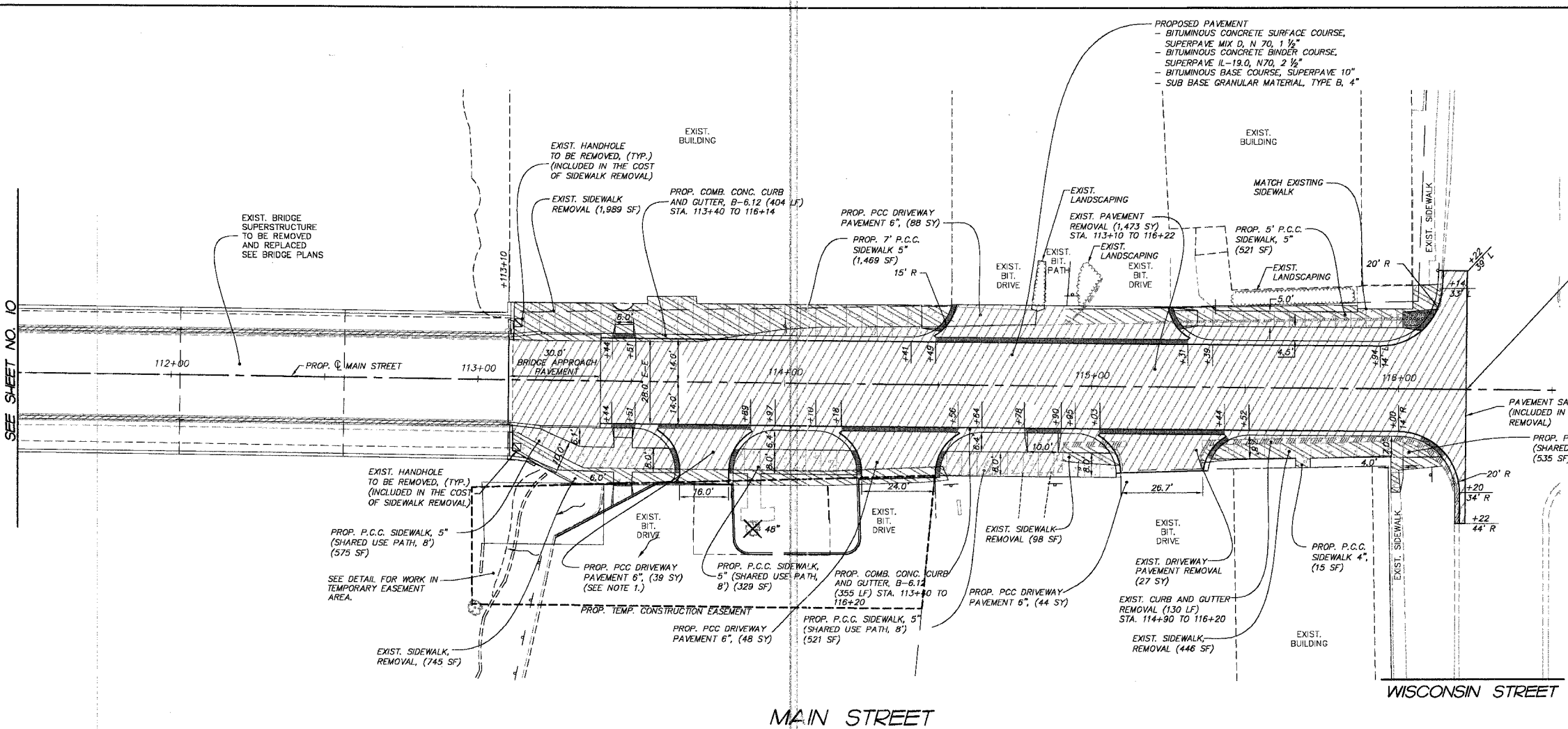
1. ENGINEER TO CONFER WITH PROPERTY OWNER TO CONFIRM AND/OR SLIGHTLY ADJUST EXACT LOCATION AND CONFIGURATION OF DRIVEWAY AND ADJACENT LIGHT POLES PRIOR TO CONSTRUCTION. (REFER TO LIGHTING PLANS FOR AFFECTED LIGHT POLES)

END MAIN STREET PROJECT STA. 116+22



| | |
|----------------------|------|
| FINAL SURVEY PLOTTED | DATE |
| NOTE BOOK TEMPLATE | BY |
| AREAS CHECKED | |
| NO. | |

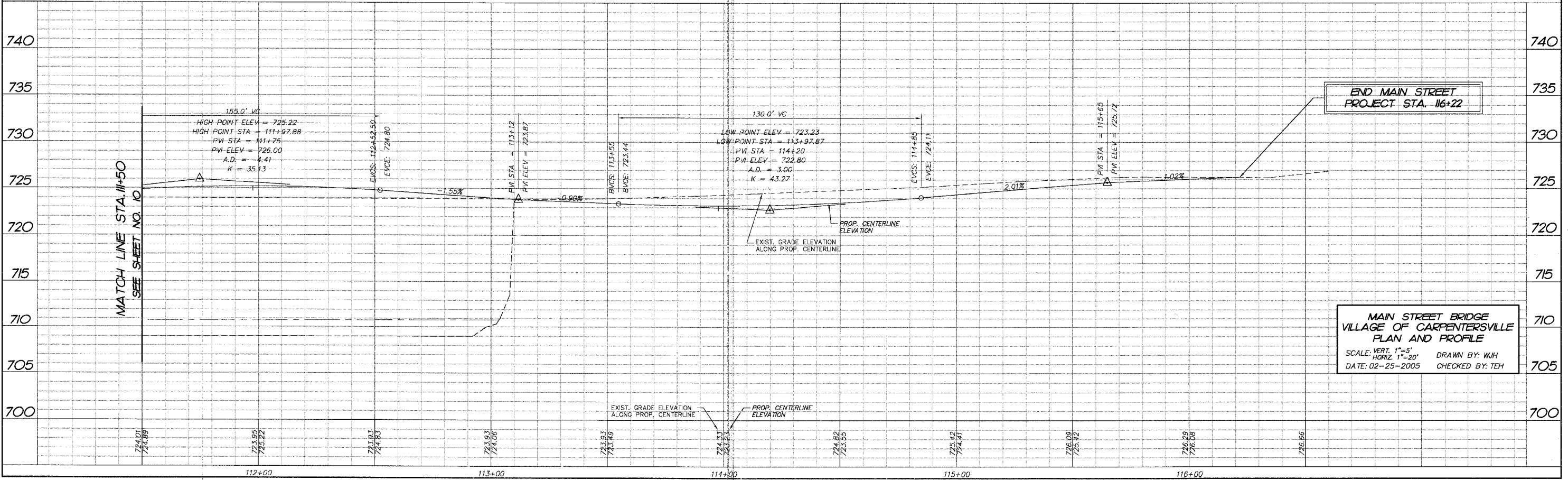
MATCH LINE STA. 111+50
SEE SHEET NO. 10



LEGEND:

- [Symbol] DENOTES PROPOSED PCC CONCRETE SIDEWALK, 5" (QUANTITY ON PLANS)
- [Symbol] DENOTES EXISTING CONCRETE SIDEWALK REMOVAL
- [Symbol] DENOTES PAVEMENT REMOVAL OR DRIVEWAY PAVEMENT REMOVAL (QUANTITY ON PLANS)
- [Symbol] DENOTES PROPOSED DEPRESSED CURB & GUTTER
- [Symbol] DENOTES EXISTING COMBINATION CONCRETE CURB & GUTTER TO BE REMOVED
- [Symbol] DENOTES EXIST. TREE TO BE REMOVED SIZE AS INDICATED ON PLANS

MAIN STREET



END MAIN STREET PROJECT STA. 116+22

MAIN STREET BRIDGE VILLAGE OF CARPENTERSVILLE PLAN AND PROFILE
SCALE: VERT. 1"=5'
HORIZ. 1"=20'
DATE: 02-25-2005
DRAWN BY: WJH
CHECKED BY: TEH

COMP. FILE: 0407157-pp01.dwg
PLOT FILE: WJH_C2-11