

F.A.P. RTE.	SECTION	COUNTY	TOTAL SHEETS	SHEET NO.
1283	02-00059-00-BR	KANE	51	13
STA. 111+50 TO STA. 116+22		FED. ROAD DIST. NO. 1 ILLINOIS HIGHWAY PROJECT		
CONTRACT # 83783				

NOTES:

- SANITARY MANHOLES TO BE REMOVED AND REPLACED SHALL BE REPLACED WITH MANHOLES, TYPE A, 4' DIA., TYPE 1 FRAME, CLOSED LID.
- EXISTING UTILITIES WITHIN THE AREA OF ROADWAY IMPROVEMENT SHALL BE REMOVED AND RELOCATED, IF NECESSARY FOR CONSTRUCTION BY THE UTILITY COMPANY WHICH HAS JURISDICTION OVER IT.
- THE EXISTING 16" WATER MAIN SHALL REMAIN IN SERVICE UNTIL THE PROPOSED BORED WATERMAIN IS INSTALLED AND IN SERVICE.
- REMOVING EXIST. VALVE SHALL BE PAID FOR UNDER VALVE VAULTS TO BE REMOVED.
- ADAPTORS REQUIRED BETWEEN HDPE WATER MAIN AND DIP WATER MAIN SHALL BE INCIDENTAL TO WATER MAIN HDPE, DIRECTIONAL BORING 16"

LEGEND

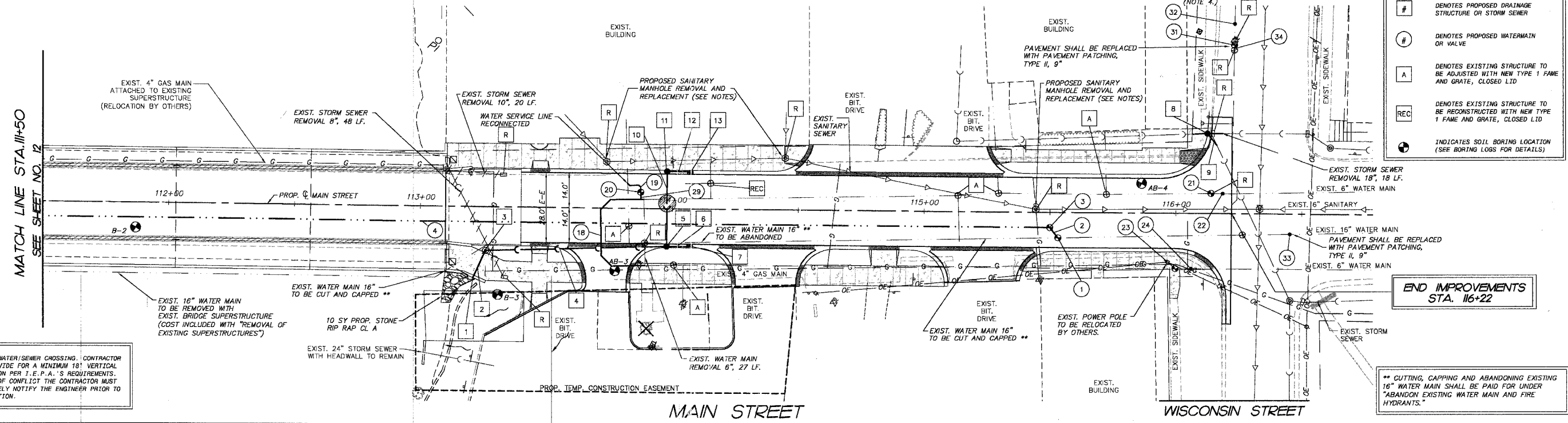
- DENOTES EXISTING STORM SEWER TO BE REMOVED, SIZE AS INDICATED.
- DENOTES STRUCTURE TO BE REMOVED (MANHOLE, VALVE VAULT, CATCH BASIN OR INLET)
- DENOTES PROPOSED DRAINAGE STRUCTURE OR STORM SEWER
- DENOTES PROPOSED WATERMAIN OR VALVE
- DENOTES EXISTING STRUCTURE TO BE ADJUSTED WITH NEW TYPE 1 FRAME AND GRATE, CLOSED LID
- DENOTES EXISTING STRUCTURE TO BE RECONSTRUCTED WITH NEW TYPE 1 FRAME AND GRATE, CLOSED LID
- INDICATES SOIL BORING LOCATION (SEE BORING LOGS FOR DETAILS)

STORM SEWER:

1 12" OUTLET AT WINGWALL INTO RIVER STA. 113+19, 27' R INV = 718.30	5 CB TA 4' DIA T11 F&G STA. 113+97.87, 15.5' R T/C = 723.46 INV = 719.89 (NE) 12" INV = 718.89 (NW) 12" INV = 718.89 (S) 12"	8 CB TA 4' DIA T11 F&G STA. 116+12.5, 32' L T/C = 723.49 INV = MATCH EXISTING 18" INV = MATCH EXISTING 18" INV = MATCH EXISTING 18"	11 CB TC 2' DIA T11 F&G STA. 113+97.87, 15.5' L T/C = 723.46 INV = 719.16 (NE) 12" INV = 719.16 (SE) 12"
2 10 LF STORM SEWER RG CLASS A, TYPE 2, 12 @ 1.00% (TBF= 7 CY)	6 7 LF STORM SEWER RG CLASS A, TYPE 1, 12 @ 1.00% (TBF= 1 CY)	9 18 LF STORM SEWER RG CLASS A, TYPE 1, 18 (TBF= 3 CY) (CONNECT EXIST. SEWER TO PROP. CB)	12 8 LF STORM SEWER RG CLASS A, TYPE 1, 12 @ 1.00% (TBF= 2 CY)
3 MH TA 4' DIA T1F CL STA. 113+26, 17.5' R RIM = 724.06 INV = 718.40 (SE) 12" INV = 718.40 (NE) 12"	7 INLET TA 2' DIA T11 F&G (DNY GRATE) STA. 114+07, 15.5' R T/C = 723.52 INV = 719.76 (SW) 12"	10 27 LF STORM SEWER RG CLASS A, TYPE 2, 12 @ 1.00% (TBF= 5 CY)	13 INLET TA 2' DIA T11 F&G STA. 114+07, 15.5' L T/C = 723.49 INV = 719.24 (SW) 12"
4 68 LF STORM SEWER RG CLASS A, TYPE 2, 12 @ 0.72% (TBF= 23 CY)			

WATER MAIN:

1 VV TA 5' DIA T1F CL STA. 115+53, 10' R RIM = 725.33	18 56 LF WATER MAIN 6" STA. 116+00, 22' R RIM = 725.49	23 VV TA 4' DIA T1F CL STA. 116+00, 22' R RIM = 725.49	32. TEMPORARY LINE STOPPER 6"
2 5 LF WATER MAIN 16"	20 VV TA 4' DIA T1F CL STA. 113+88, 6.5' L RIM = 723.14	24 TEMPORARY LINE STOPPER 6"	34. 10 LF WATER MAIN 6"
3 VV TA 5' DIA T1F CL (* SPECIAL, SEE DETAIL) STA. 115+50, 6' R RIM = 725.33	21 VV TA 4' DIA T1F CL STA. 116+14, 8' L RIM = 725.10	29 3 LF WATER MAIN 6"	
4 700 LF WATER MAIN HDPE, DIRECTIONAL BORING 16"	22 TEMPORARY LINE STOPPER 6"	31 VV TA 4' DIA T1FCL STA. 116+22.69, 67.5' L RIM = MATCH EXIST.	* UNLESS SPECIFIED AS SPECIAL VALVE VAULT ALL VALVE VAULTS SHALL BE STANDARD VALVE VAULTS IN ACCORDANCE WITH STANDARD VALVE VAULT DETAIL.



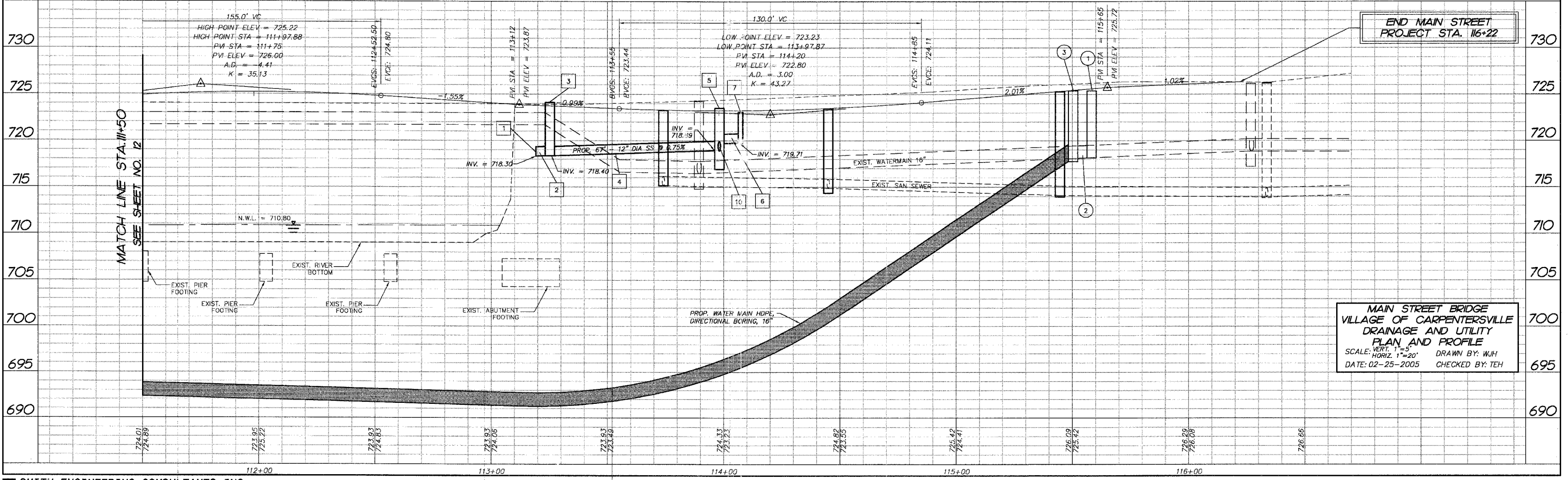
● DENOTES WATER/SEWER CROSSING. CONTRACTOR MUST PROVIDE FOR A MINIMUM 18" VERTICAL SEPARATION PER T.E.P.A.'S REQUIREMENTS. IN CASE OF CONFLICT THE CONTRACTOR MUST IMMEDIATELY NOTIFY THE ENGINEER PRIOR TO INSTALLATION.

END IMPROVEMENTS STA. 116+22

** CUTTING, CAPPING AND ABANDONING EXISTING 16" WATER MAIN SHALL BE PAID FOR UNDER "ABANDON EXISTING WATER MAIN AND FIRE HYDRANTS."

END MAIN STREET PROJECT STA. 116+22

MAIN STREET BRIDGE VILLAGE OF CARPENTERSVILLE DRAINAGE AND UTILITY PLAN AND PROFILE
 SCALE: VERT. 1"=5' HORIZ. 1"=20' DRAWN BY: WJH
 DATE: 02-25-2005 CHECKED BY: TEH



BY	DATE
FINAL SURVEY PLOTTED	
NOTE BOOK TEMPLATE	
AREAS CHECKED	
NO.	

COMP. FILE: 040157-PR01.DWG
 PLOT FILE: 040157-PR01.DWG
 VIEW: CE-13