

**INDEX OF SHEETS**

- S-1. General Plan and Elevation
- S-2. General Notes, Bill of Material, and Index of Sheets
- S-3. Retaining Wall Details
- S-4. Deck Plan and Cross Section
- S-5. Deck Joint Details
- S-6. PPC Deck Beam Details
- S-7. Concrete Bridge Rail, Special - Elevation and Details
- S-8. Concrete Bridge Rail, Special - Details
- S-9. Concrete Bridge Rail, Special - Details
- S-10. West Abutment Plan and Elevation
- S-11. West Abutment Details
- S-12. East Abutment Plan and Elevation
- S-13. East Abutment Details
- S-14. Pier 1 Details
- S-15. Pier 2 Details
- S-16. Pier 3 Details

**TOTAL BILL OF MATERIAL**

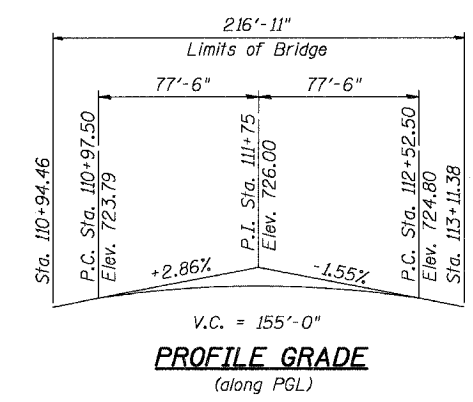
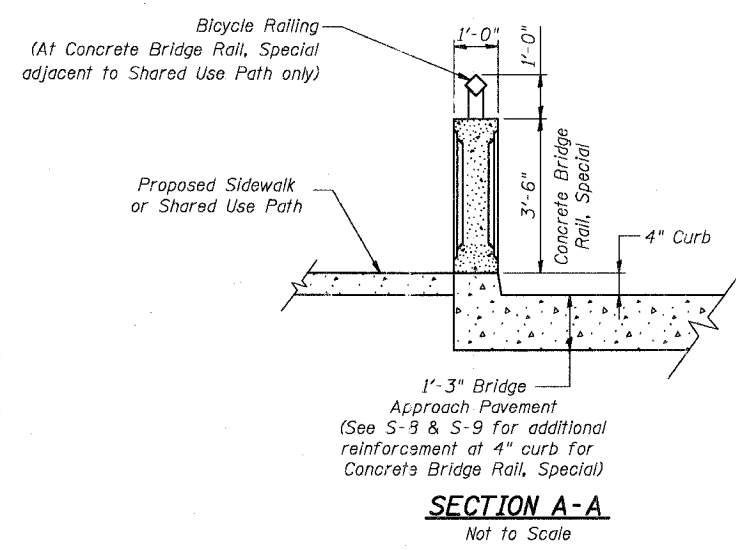
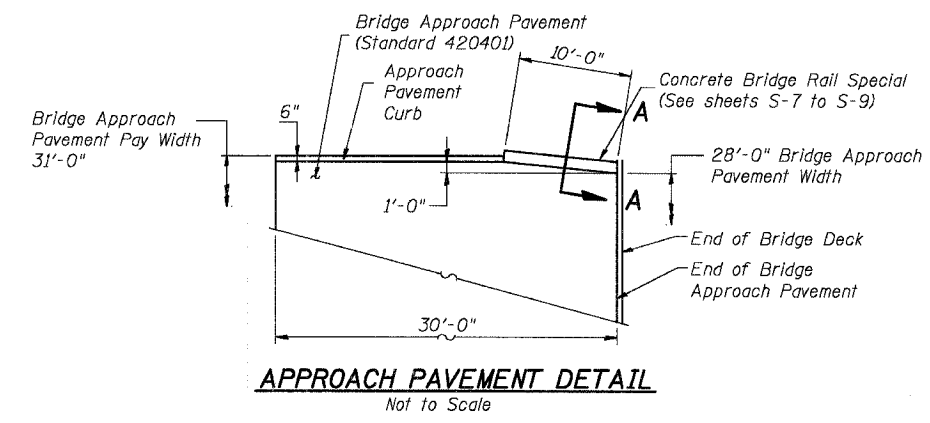
ITEM	UNIT	TOTAL
Porous Granular Backfill	Cu. Yds.	106
Stone Rip Rap, Class A3	Sq. Yds.	33
Filter Fabric	Sq. Yds.	33
Removal of Existing Superstructures	L. Sum	1
Concrete Removal	Cu. Yds.	94.7
Structure Excavation	Cu. Yds.	204
Preformed Joint Seal, 2 1/2"	Foot	96
Concrete Structures	Cu. Yds.	199.7
Concrete Superstructure	Cu. Yds.	53.6
Bridge Deck Grooving	Sq. Yds.	618
Protective Coat	Sq. Yds.	237
Formed Concrete Repair (<= 5" Depth)	Sq. Ft.	7
Precast Prestressed Concrete Deck Beams (21" Depth)	Sq. Ft.	7,687
Reinforcement Bars, Epoxy Coated	Pound	64,100
Name Plates	Each	1
Bridge Seat Sealer	Sq. Ft.	346
Epoxy Crack Sealing	Foot	107
Geocomposite Wall Drain	Sq. Yd.	39
Pipe Drain, 6"	Foot	196
Concrete Wearing Surface, 5"	Sq. Yds.	1,141
Concrete Bridge Rail, Special	Foot	955
Bicycle Railing	Foot	575
Protective Shield	Sq. Yds.	998
Precast Prestressed Concrete Deck Beams (21" Depth), Special Type A	Sq. Ft.	1,922
Precast Prestressed Concrete Deck Beams (21" Depth), Special Type B	Sq. Ft.	641

**GENERAL NOTES**

- A Calcium Nitrite Corrosion inhibitor as covered in the Special Provisions (Check Sheet #36) shall be used in the concrete for prestressed concrete deck beams.
- Reinforcement bars shall conform to the requirements of AASHTO M 31, M 42, or M 53 Grade 60.
- Expansion joint plates and attached bars shall be shop painted with the inorganic zinc rich primer.
- Plan dimensions and details relative to existing structures have been taken from existing plans and are subject to nominal construction variations. It shall be the Contractor's responsibility to verify such dimensions and details in the field and make necessary approved adjustments prior to construction or ordering of materials. Such variations shall not be cause for additional compensation for a change in the scope of the work, however, the Contractor will be paid for the quantity actually furnished at the unit price for the work.
- Bridge Seat Sealer shall be applied to the seat area of Piers 1 and 3.
- All construction joints shall be bonded.
- Expansion guards which are not cast in the precast unit shall be fabricated and erected according to Article 503.10(c) of the Standard Specifications and are included in quantity of structural steel.
- Expansion joint plates and attached bars shall be AASHTO M 270 Grade 50
- Expansion joint plates and attached bars shall be shop painted with the inorganic zinc rich primer.
- Layout of slope protection system may be varied in the field to suit ground conditions as directed by the Engineer.
- The existing structural steel coating contains lead. The Contractor shall take appropriate precautions to deal with the presence of lead on this project.
- The Contractor shall obtain a construction permit from the Illinois Department of Natural Resources, Office of Water Resources for any temporary construction activity placed in the water not shown herein.
- Cover from the face of concrete to reinforcement bars shall be 3" for surfaces formed against earth and 2" for all other surfaces unless otherwise shown.
- Reinforcement bending details shall be in accordance with the "Manual of Standard Practice for Detailing Reinforced Concrete Structures," ACI 315, latest edition.
- Reinforcement bar splices shall be in accordance with the following table unless shown otherwise on the drawings.

Size	Basic Lap	Top Bars Lap
#4	1'-8"	2'-5"
#5	2'-2"	3'-0"
#6	2'-7"	3'-7"
#7	3'-5"	4'-10"
#8	4'-6"	6'-4"
#9	5'-9"	8'-1"

- Concrete for Shared Use Path and Sidewalk on bridge shall be paid for as Concrete Superstructure.
- Excavation behind existing abutment walls shall be done before removing the existing superstructure



DESIGNED	KMA
CHECKED	RGD
DRAWN	WJH
CHECKED	NRF

SMITH ENGINEERING CONSULTANTS, INC.	
REVISIONS	
NAME	DATE

ILLINOIS DEPARTMENT OF TRANSPORTATION  
General Notes, Bill of Material, and Index of Sheets  
Main Street Over Fox River  
"Public Waters"  
Village of Carpentersville  
Section 02-00059-00-BR  
SN. 045-6150  
DATE 02-25-2005 Kane County