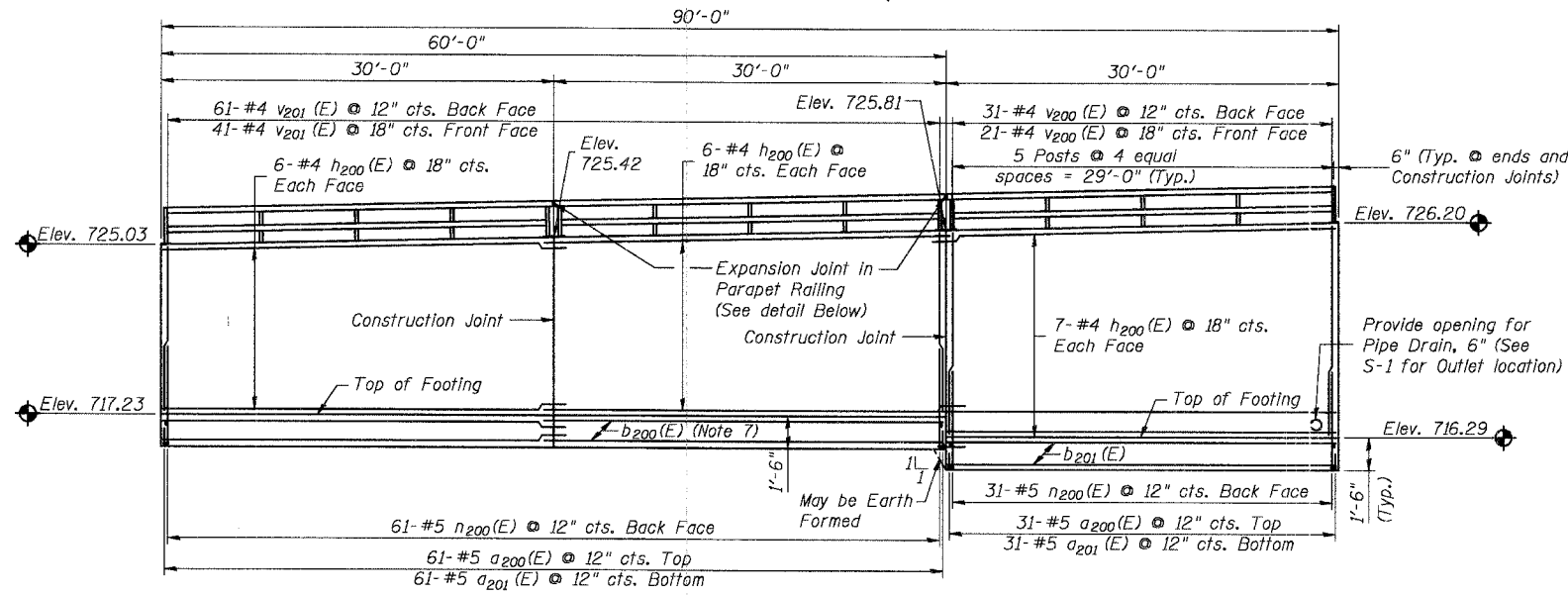
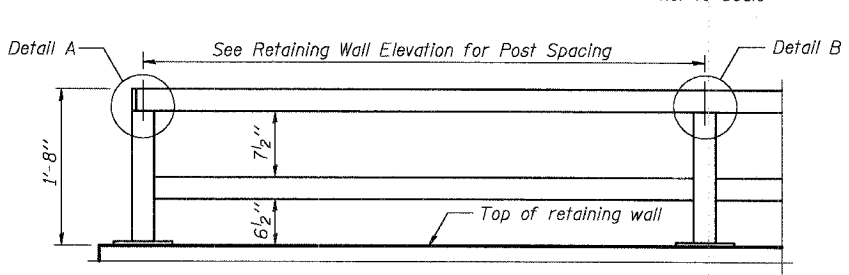


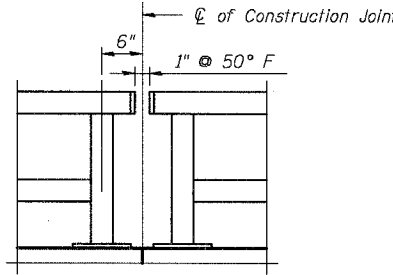
RETAINING WALL PLAN
Not to Scale



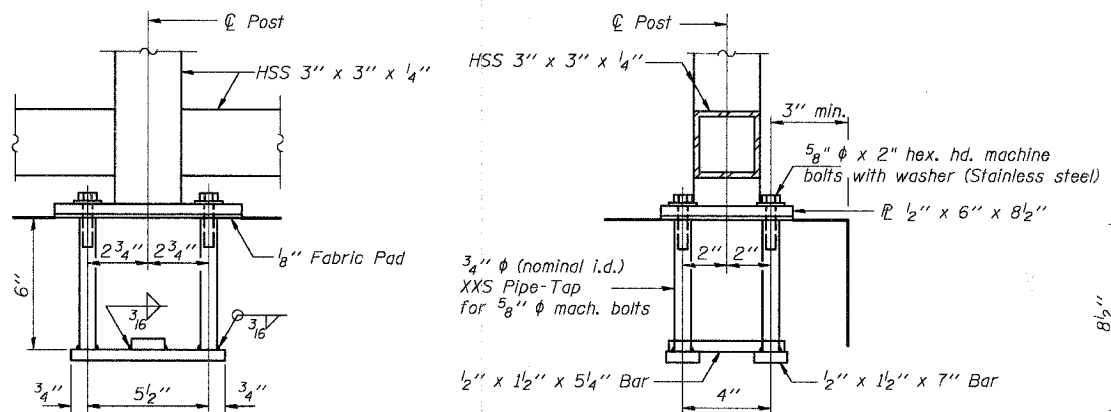
RETAINING WALL ELEVATION
Not to Scale



PARAPET RAILING ELEVATION



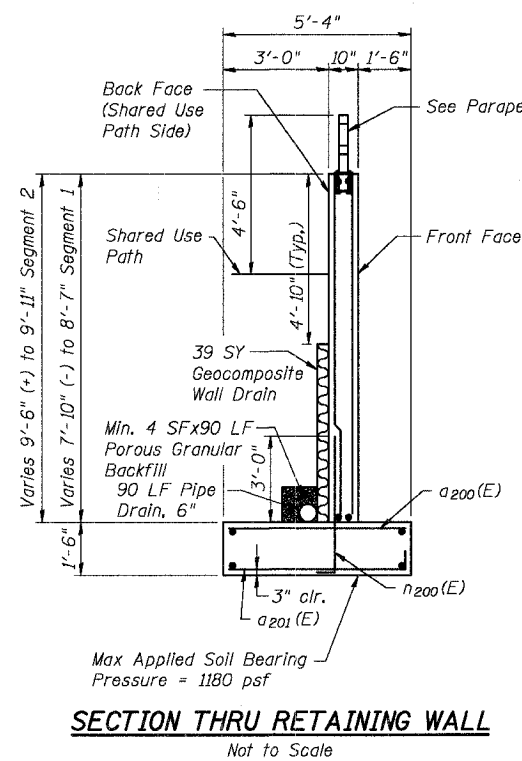
PARAPET RAILING ELEVATION AT EXPANSION JOINT



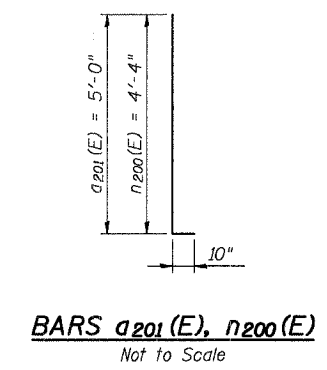
ANCHOR BOLT DETAILS

In lieu of the cast-in-place anchor device shown, the Contractor has the option of drilling and epoxy grouting 5/8" anchor rods. Embedment shall be according to the manufacturer's specifications.

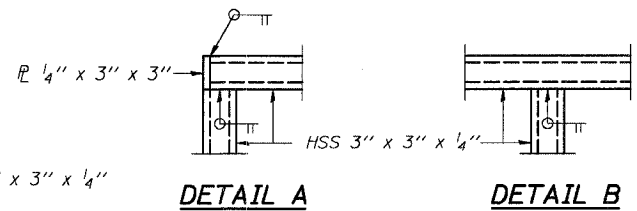
DESIGNED	KMA
CHECKED	RGD
DRAWN	WJH
CHECKED	NRF



SECTION THRU RETAINING WALL
Not to Scale

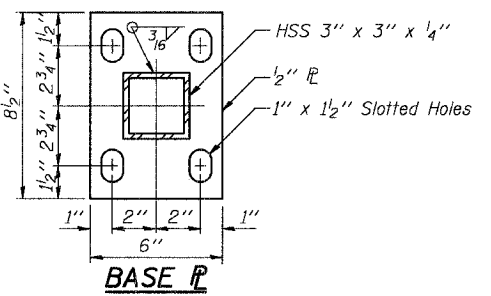


BARS a201(E), n200(E)
Not to Scale



DETAIL A

DETAIL B



BASE P

NOTES

- Railing shall be according to Section 509 of the Standard Specifications, except as noted, and will be paid for at the Contract Unit Price per foot for Bicycle Railing.
- Hollow structural sections shall conform to the requirements of ASTM designation A 500, Grade B, structural steel tubing.
- All other steel shapes and plates shall conform to the requirements of AASHTO M 270 Grade 36.
- If the option of drilling and epoxy grouting the anchor rods is chosen, the Contractor shall use the capsule or the adhesive cartridge type anchor rods that have been previously tested and given a prior approval by the Department. The Contractor shall install these anchor rods in pre-drilled holes according to the manufacturer's recommendations and procedures. The capsule or the adhesive cartridge shall be sealed with pre-measured amounts of the adhesive chemical.
- Space reinforcement to miss anchor rods.
- All posts, railing, splices, anchor devices, and bent plates shall be painted using the organic zinc rich primer/epoxy/polyurethane (OZ/E/U) paint system as outlined in "Organic Zinc-Rich Paint System (BDE)." The entire system shall be shop applied, with the exception that masked off connection surfaces, field installed fasteners and damaged areas shall be touched up in the field. The color and finish shall closely match the texture, gloss, and color of the Proposed Light Poles (Black Gloss). The Engineer shall be provided with a 4" x 4" sample for comparison and acceptance.
- Increase Lap for b200(E) bars at the top of footing to maintain clear cover as described in General Notes, on S-2.
- Reinforcement Bar bending dimensions are out to out.
- The Parapet railing shall be paid for as Bicycle Railing.

BILL OF MATERIAL

Bar	No.	Size	Length (FT)	Shape
a200(E)	92	# 5	5'-0"	—
a201(E)	92	# 5	5'-10"	—
b200(E)	10	# 5	31'-11"	—
b201(E)	5	# 5	29'-8"	—
h200(E)	19	# 4	31'-4"	—
n200(E)	92	# 5	5'-2"	—
v200(E)	52	# 4	9'-2"	—
v201(E)	102	# 5	7'-6"	—
Structure Excavation		Cu. Yds.	134	
Reinforcement Bars, Epoxy Coated		Pound	3,250	
Concrete Structures		Cu. Yds.	42.9	
Pipe Drain, 6"		Foot	100	
Geocomposite Wall Drain		Sq. Yds.	39	
Porous Granular Backfill		Cu. Yd.	35	
Bicycle Railing		Foot	90	

Reinforcement Bars designated (E) shall be Epoxy Coated



REVISIONS	
NAME	DATE

ILLINOIS DEPARTMENT OF TRANSPORTATION
 Retaining Wall Details
 Main Street Over Fox River
 "Public Waters"
 Village of Carpentersville
 Section 02-00059-00-BR
 SN. 045-6150
 Kane County
 DATE 02-25-2005