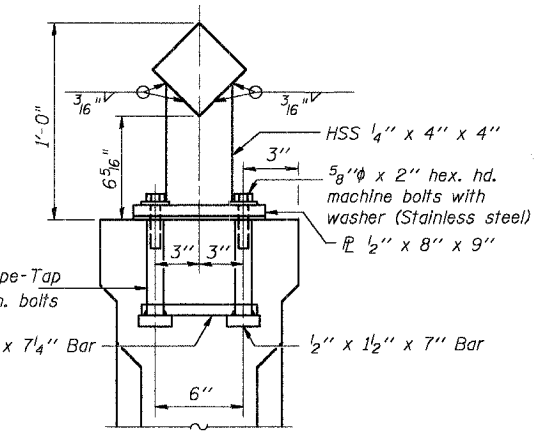
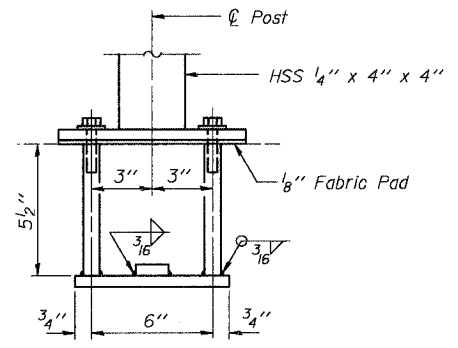


APPROACH ELEVATION
 Looking From Roadway
 Not to Scale
 (Conduit not shown for clarity)



SECTION THROUGH TUBE STEEL RAILING EXTENSION
 Not to Scale



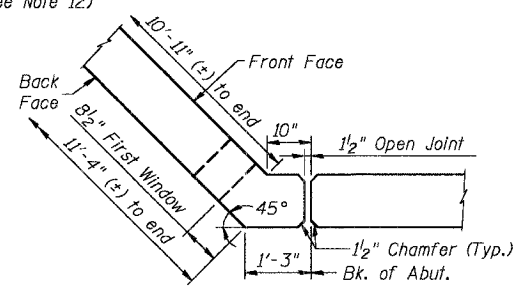
ANCHOR BOLT DETAILS
 Not to Scale

In lieu of the cast-in-place anchor device shown, the Contractor has the option of drilling and epoxy grouting 5/8" anchor rods. Embedment shall be according to the manufacturer's specifications.

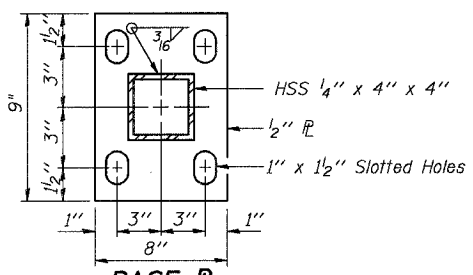
BARS e 308 (E), e 309 (E), e 310 (E), e 311 (E), e 312 (E), e 313 (E), e 314 (E), e 315 (E)

A, B, & C DIMENSIONS

Bar	A	B	C
e 308 (E)	6"	10'-9"	45°
e 309 (E)	6"	10'-9"	45°
e 310 (E)	11"	11'-2"	45°
e 311 (E)	11"	11'-2"	45°
e 312 (E)	6'-9"	9'-4"	17°
e 313 (E)	6'-9"	9'-4"	17°
e 314 (E)	6'-6"	9'-2"	17°
e 315 (E)	6'-6"	9'-2"	17°

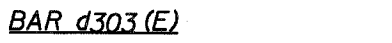


DETAIL H
 Not to Scale



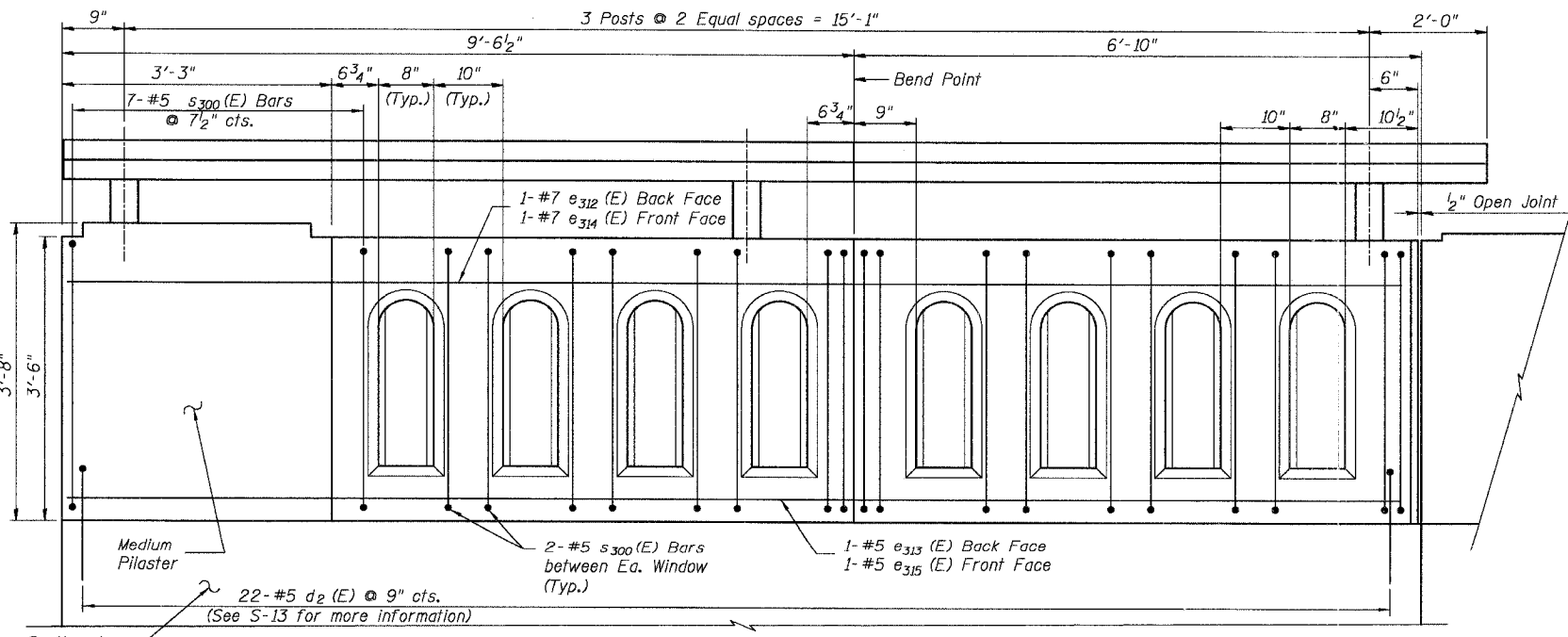
BASE PLATE
 Not to Scale

BAR d303 (E)



NOTES

- Reinforcement Bar bending dimensions are out-to-out.
- Reinforcement Bars shall conform to the requirements of AASHTO M31, M42, or M53 Grade 60.
- Reinforcement Bending Details shall be in accordance with the "Manual of Standard Practice for Detailing Reinforced Concrete Structures", ACI 315, Latest Edition.
- Work this sheet with S-2 and S-4
- Coordinate d303(E) Bar with Bridge Approach Pavement (Std. 42040)
- Rolling shall be according to Section 509 of the Standard Specifications, except as noted, and will be paid for at the Contract Unit Price per foot for Bicycle Railing.
- Hollow structural sections shall conform to the requirements of ASTM designation A 500, Grade B, structural steel tubing.
- All other steel shapes and plates shall conform to the requirements of AASHTO M 270 Grade 36.
- If the option of drilling and epoxy grouting the anchor rods is chosen, the Contractor shall use the capsule or the adhesive cartridge type anchor rods that have been previously tested and given a prior approval by the Department. The Contractor shall install these anchor rods in pre-drilled holes according to the manufacturer's recommendations and procedures. The capsule or the adhesive cartridge shall be sealed with pre-measured amounts of the adhesive chemical.
- Space reinforcement to miss anchor rods.
- All posts, railing, splices, anchor devices, and bent plates shall be painted using the organic zinc rich primer/epoxy/polyurethane (OZ/E/U) paint system as outlined in "Organic Zinc-Rich Paint System (BDE)." The entire system shall be shop applied, with the exception that masked off connection surfaces, field installed fasteners and damaged areas shall be touched up in the field. The color shall closely match the texture, glass, and color of the proposed Light Poles (Black Gloss). The Engineer shall be provided with a 4" x 4" samples for comparison and acceptance. shall be TNEMEC (or equal) colors: Black
- Junction Box, Stainless Steel, Embedded in Structure 18"x18"x6" shall be included in the cost of Concrete Bridge Rail, Special, Junction Box Stainless Steel, Embedded in Structure 18"x18"x6" shall be furnished and installed in accordance with Section 813 of the Standard Specifications. (NEMA 4X)



SUMMARY OF ELECTRICAL QUANTITIES

Item	Unit	Total Quantity
* Conduit Embedded in Structure 1" Dia. PVC	Foot	610 +/-
* Conduit Embedded in Structure 1 1/2" Dia. PVC	Foot	520 +/-
** Junction Box, Stainless Steel, Embedded in Structure 18" x 18" x 6"	Each	4
*** Anchor Bolts	Each	40

* See Note 5 on Sheet S-08.
 ** See Note 12 this sheet.
 *** See Note 4 on S-08.

SOUTHEAST ELEVATION

Looking From Shared Use Path
 Not to Scale

DESIGNED	KMA
CHECKED	RGD
DRAWN	WJH
CHECKED	NRF

SMITH ENGINEERING CONSULTANTS, INC.
 CIVIL, ARCHITECTURAL, ELECTRICAL AND SURVEYORS

REVISIONS	NAME	DATE

ILLINOIS DEPARTMENT OF TRANSPORTATION
 Concrete Bridge Rail, Special - Details
 Main Street Over Fox River
 "Public Waters"
 Village of Carpentersville
 Section 02-00059-00-BR
 SN. 045-6150
 Kane County
 DATE 02-25-2005