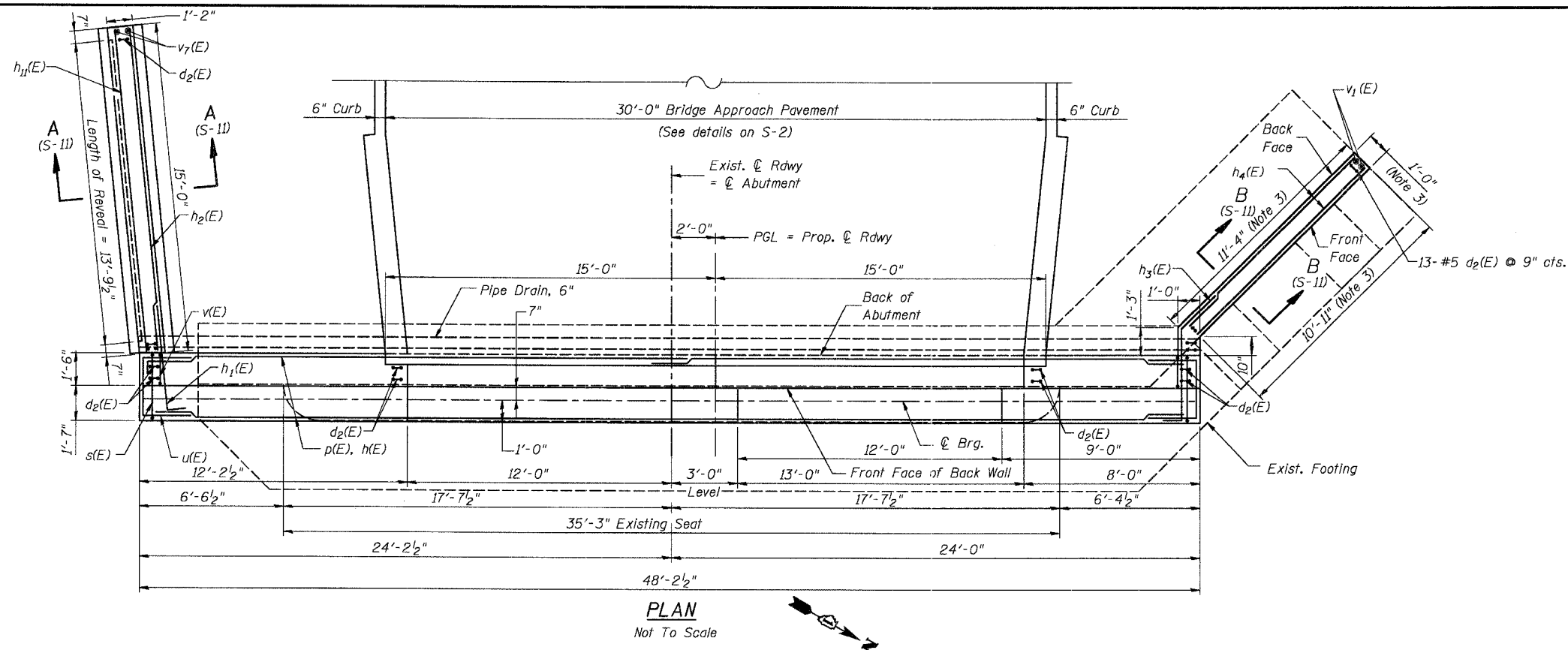
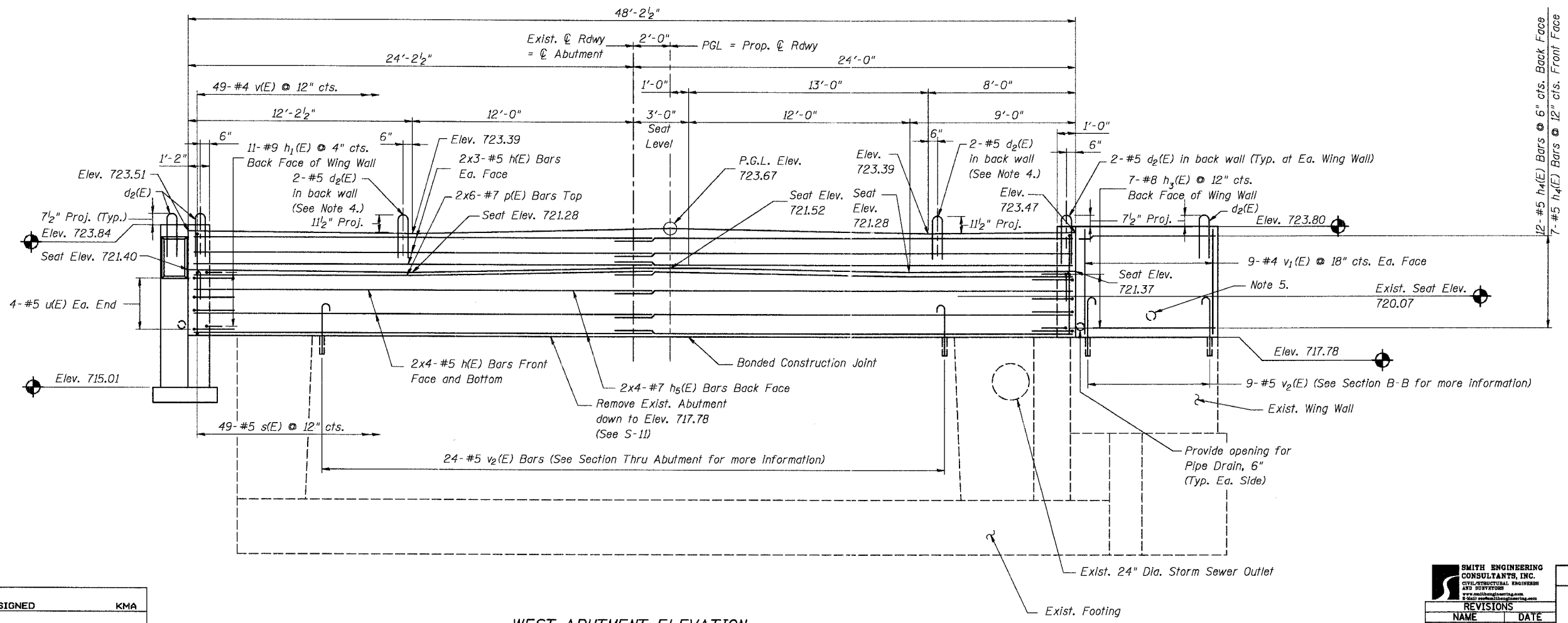


**GENERAL NOTES**

1. Removal of existing concrete shall conform to Article 501.03 of the Standard Specifications.
2. Space reinforcement in abutment seat to miss anchor bolts.
3. Contractor to field verify dimensions of existing wing wall.
4. Coordinate placement of  $d_2(E)$  Bars with Concrete Bridge Rail. Special details on sheets S-7, S-8, and S-9.
5. Provide opening for Exist. 4" Gas Main if line is to be attached to proposed superstructure. Contractor to coordinate with the Utility Company responsible for line.



**PLAN**  
Not To Scale



**WEST ABUTMENT ELEVATION**  
Looking West (Not To Scale)

|          |     |
|----------|-----|
| DESIGNED | KMA |
| CHECKED  | RGD |
| DRAWN    | WJH |
| CHECKED  | NRF |



| REVISIONS |      |
|-----------|------|
| NAME      | DATE |
|           |      |
|           |      |
|           |      |
|           |      |
|           |      |

ILLINOIS DEPARTMENT OF TRANSPORTATION  
West Abutment Plan and Elevation  
Main Street Over Fox River  
"Public Waters"  
Village of Carpentersville  
Section 02-00059-00-BR  
SN. 045-6150  
Kane County  
DATE 02-25-2005