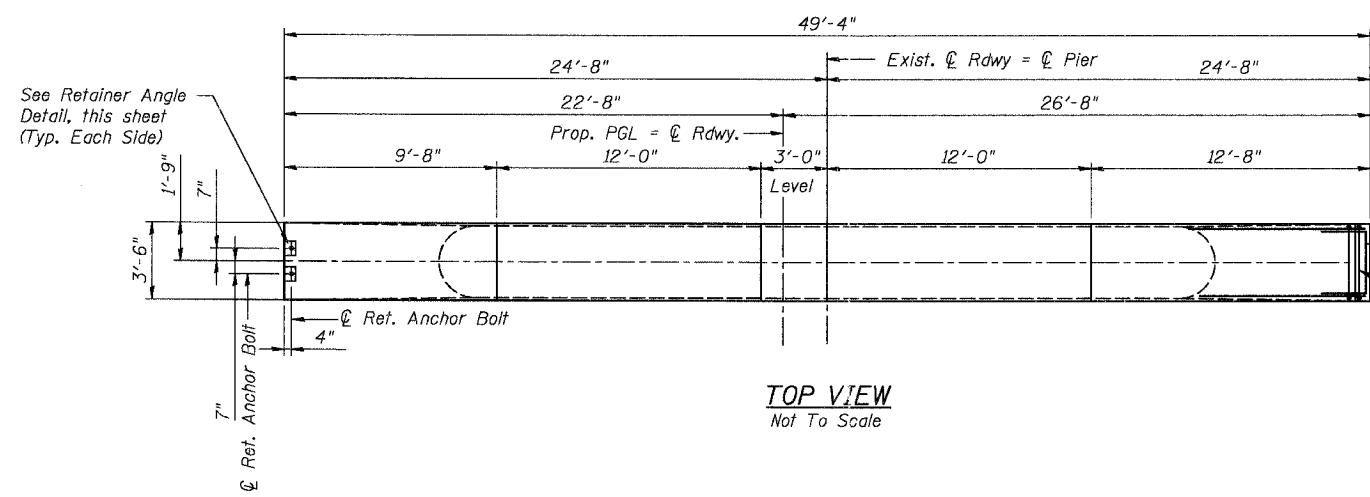
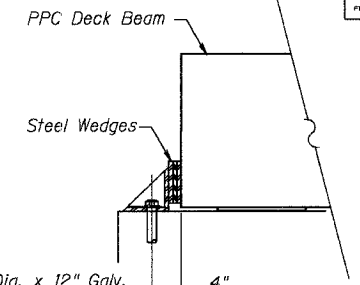


SECTION A-A
Not To Scale



TOP VIEW
Not To Scale

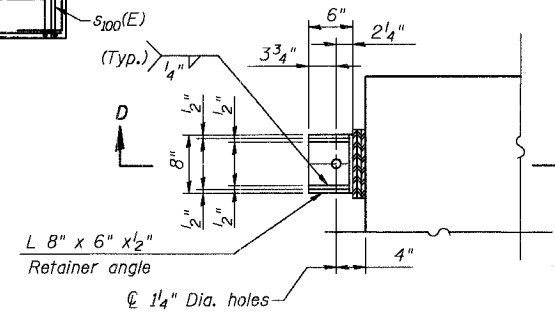


SECTION D-D
Not To Scale

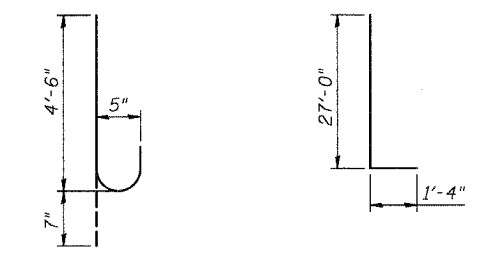
A & B DIMENSIONS

Bar	A	B
s100(E)	3'-2"	3'-2"
s101(E)	2'-7"	3'-2"
s102(E)	2'-7"	3'-8"
u100(E)	3'-0"	2'-2"

BAR s100(E), s101(E), u100(E)

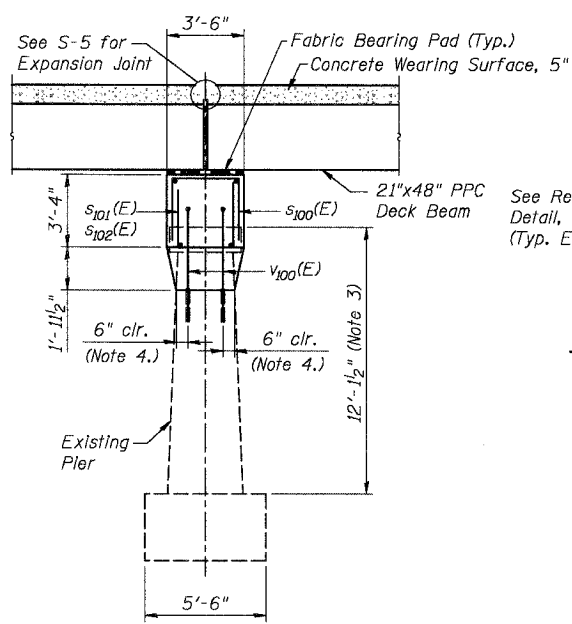


SIDE RETAINER ANGLE DETAIL
Not To Scale

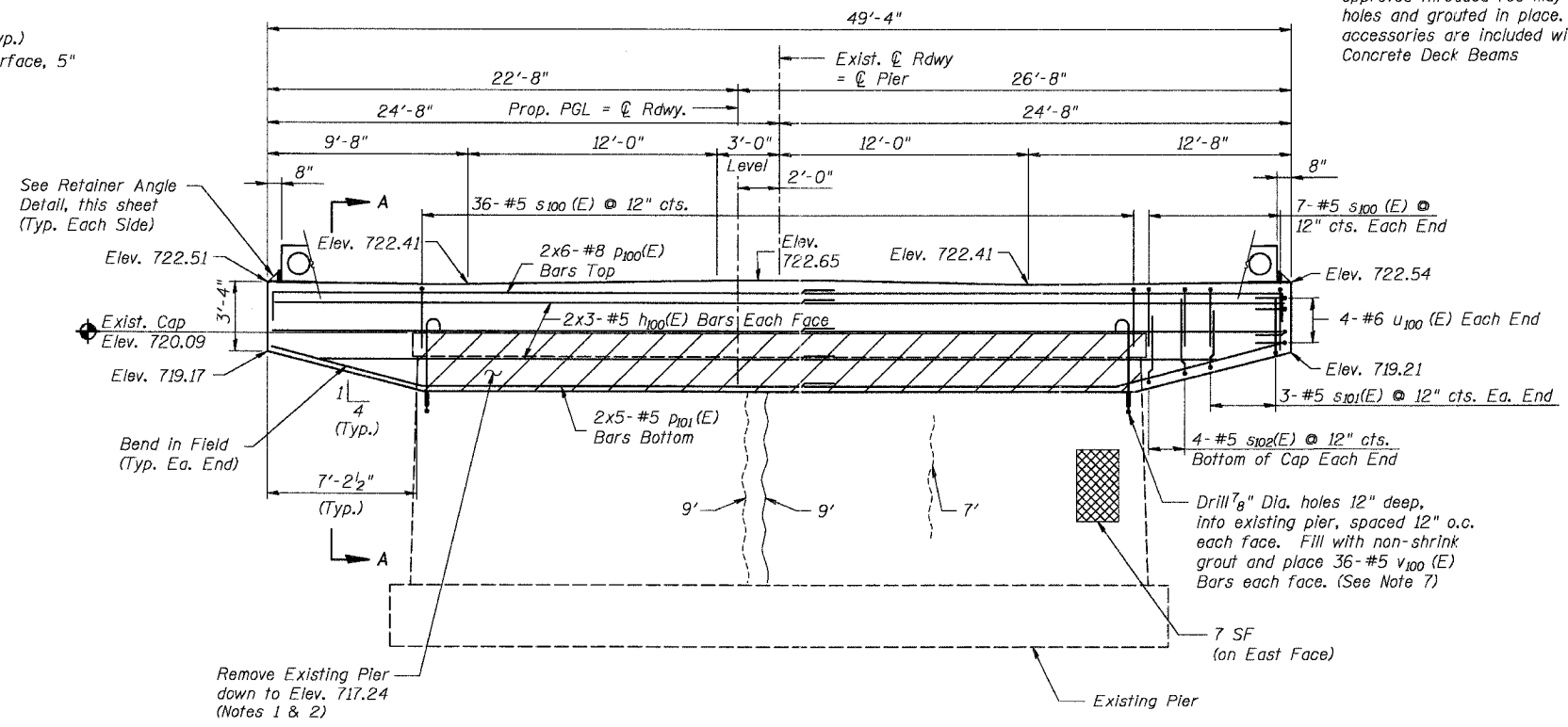


BAR v100(E)

BAR p100(E)



END VIEW
Not To Scale



PIER 1 ELEVATION
West Side Looking East
Not To Scale

LEGEND

- Indicates Epoxy Crack Sealing (Far Face)
- Indicates Epoxy Crack Sealing (Near Face)
- Indicates Concrete Removal Area
- Indicates Formed Concrete Repair $\le 5''$

BILL OF MATERIAL

Bar	No.	Size	Length (FT)	Shape
h100(E)	12	# 5	25'-7"	
p100(E)	12	# 8	29'-0"	
p101(E)	10	# 5	25'-7"	
s100(E)	50	# 5	9'-6"	
s101(E)	6	# 5	8'-11"	
s102(E)	8	# 5	9'-11"	
u100(E)	8	# 5	7'-4"	
v100(E)	72	#5	5'-1"	
Reinforcement Bars, Epoxy Coated			Pound	2,590
Concrete Removal			Cu. Yds.	11
Concrete Structures			Cu. Yds.	30.9
Formed Concrete Repair, $\le 5''$			Sq. Ft.	7
Epoxy Crack Sealing			Foot	25
Bridge Seat Sealer			Sq. Ft.	173

Reinforcement Bars designated (E) shall be Epoxy Coated

GENERAL NOTES

- Removal of existing concrete shall conform to Article 501.03 of the Standard Specifications.
- Preserve and incorporate 1'-0" length of a minimum of 50% of existing vertical reinforcement in removal area.
- Existing Pier Dimensions based on existing design drawings.
- Maintain 2" clear distance between existing vertical reinforcement and proposed drilled holes for v100(E) bars.
- Space reinforcement in cap to miss anchor bolts
- Reinforcement Bar Bending dimensions are out to out.
- Cost for Drilling and Grouting v100(E) Bars shall be included in Reinforcement Bars, Epoxy Coated.

SMITH ENGINEERING CONSULTANTS, INC.
 CIVIL ENGINEERING
 1300 S. WASHINGTON ST.
 SUITE 200
 CHICAGO, ILL. 60605
 (312) 467-1000
 www.smithengineering.com

REVISIONS	
NAME	DATE

ILLINOIS DEPARTMENT OF TRANSPORTATION

Pier 1 Details
 Main Street Over Fox River
 "Public Waters"
 Village of Carpentersville
 Section 02-00059-00-BR
 SN. 045-6150
 Kane County

DATE 02-25-2005

DESIGNED	KMA
CHECKED	RGD
DRAWN	WJH
CHECKED	NRF