

CONTROL CABINET - DETAILS

NOTES

THE CABINET SHALL BE FABRICATED FROM 0.125" THICK ALUMINUM ALLOY SHEET AND SHALL BE REINFORCED WITH ALUMINUM ANGLES. THE CABINET DOOR SHALL BE NEMA TYPE 3R CONSTRUCTION WITH NEOPRENE GASKET. THE DOOR SHALL HAVE STAINLESS STEEL HINGES AND THREE POINT LOCKING SYSTEM.

THE CONTRACTOR SHALL REMOVE VEGETATION AND TOPSOIL, LEVEL THE AREA IN FRONT OF THE CONTROL CABINET DOOR AND PLACE LENGTH WISE, PARALLEL TO CONTROL CABINET, A PRECAST PAD, 36"x36"x3" MINIMUM SIZE. THE COST OF LABOR AND MATERIALS SHALL BE INCIDENTAL TO THE CONTROL CABINET.

CONTROL WIRE SHALL BE #12 AWG, 600V, TYPE "MTW" STRANDED COPPER GRAY SWITCH BOARD WIRE. THE ENDS OF ALL CONTROL WIRES SHALL BE IDENTIFIED.

THE ELECTRIC METER BOX SHALL BE MOUNTED ON THE SIDE OF THE CONTROL CABINET, NEAR TO THE SERVICE POLE AND/OR AS DIRECTED BY THE ENGINEER.

ALL CONTROL CABINET ITEMS SHALL HAVE SUITABLE IDENTIFICATION. OPEN CIRCUIT BREAKERS, CONTACTORS AND OTHER OPEN DEVICES SHALL HAVE PERMANENT SELF STICKING TAGS. DEVICES IN ENCLOSURES SHALL HAVE ENGRAVED 2-COLOR LAMINATED PLASTIC NAMEPLATES ATTACHED TO ENCLOSURES WITH SCREWS. NAMEPLATES SHALL BE ENGRAVED TO CORRESPOND TO DESIGNATIONS ON THE DRAWINGS. INTERNAL CABINET WIRING SHALL BE IDENTIFIED AS INDICATED OR AS DIRECTED BY THE ENGINEER BY MEANS OF SELF-STICKING TAGS APPLIED AT EACH CONNECTED END. IDENTIFICATION SHALL BE MADE BY THE CABINET MANUFACTURER.

ALL WIRING WITHIN THE CABINET SHALL BE COLOR CODED AS INDICATED.
 R = RED BL = BLUE W = WHITE
 B = BLACK Y = YELLOW G = GREEN

PROVIDE SEALING GROMMETS FOR ALL OPEN WIRING EXTENDED FROM DEVICES IN BOXES OR CABINETS WITHIN THE CONTROL CABINET.

THE CABINET SHALL BE PRIMED AND PAINTED AS SPECIFIED. THE OUTSIDE SURFACE OF THE CONTROL CABINET SHALL HAVE A BLACK COAT POWDER FINISH.

THE HEADS OF CONNECTOR SCREWS SHALL BE PAINTED WHITE FOR NEUTRAL BUSS CONNECTION AND GREEN FOR GROUND BUSS CONNECTORS.

ALL WIRING SHALL BE NEATLY DRESSED AND SUPPORTED.

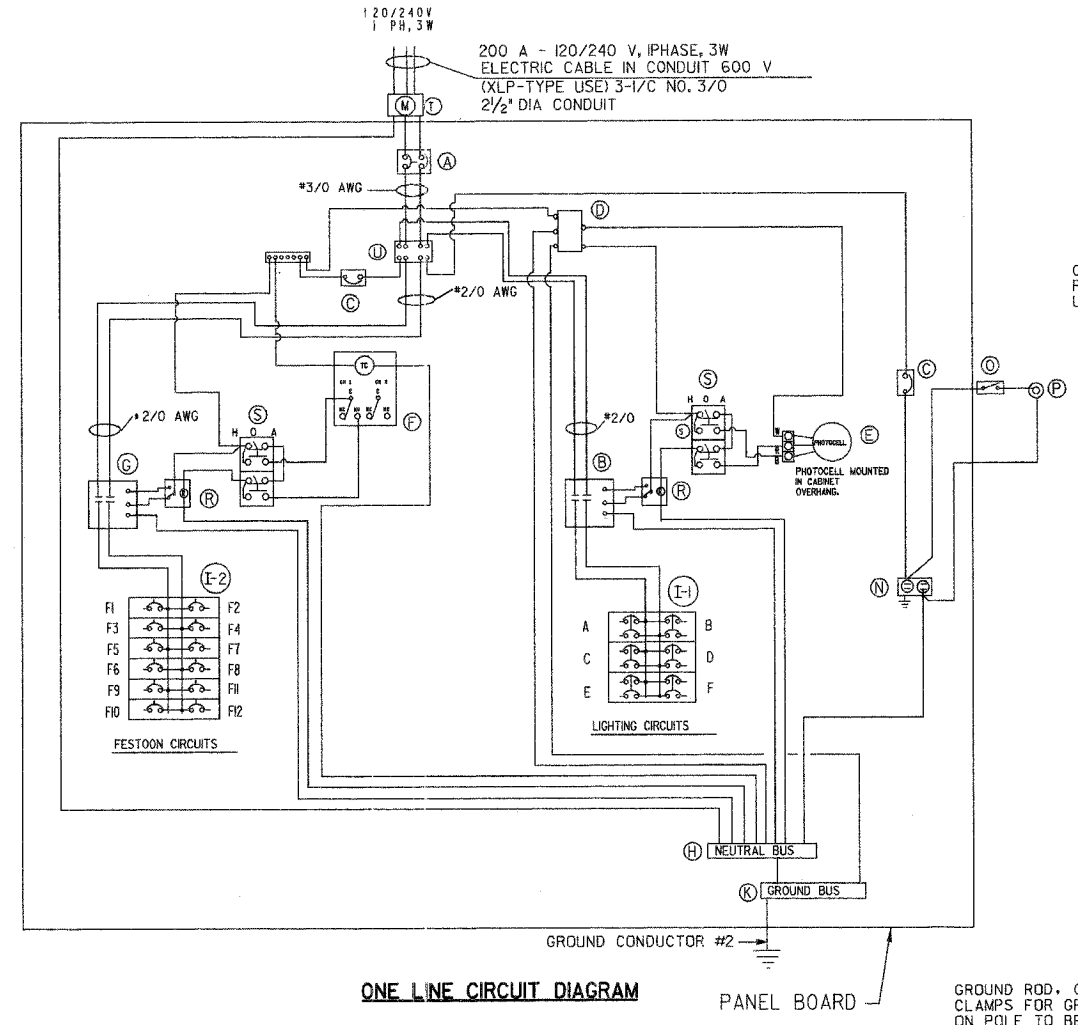
THE CONTROLLER SHALL BE CONSTRUCTED TO U.L. STD. 508 AND BEAR THE U.L. LABEL "ENCLOSED INDUSTRIAL CONTROL PANEL".

PROVIDE A HOLDER AND WATERPROOF POUCH ON THE INNER SIDE OF THE CONTROLLER DOOR. THE HOLDER AND POUCH SHALL BE MOUNTED SO THAT RAIN WATER OR CONDENSED WATER CANNOT ENTER THE POUCH WITH THE CABINET DOOR OPEN. FURNISH A LAMINATED THE APPROVED COPY OF THE "CONTROL CABINET WIRING DIAGRAM".

THE CONTRACTOR SHALL OBTAIN ANCHOR BOLTS LOCATION TEMPLATE FROM THE FABRICATOR OF LIGHTING CONTROLLER

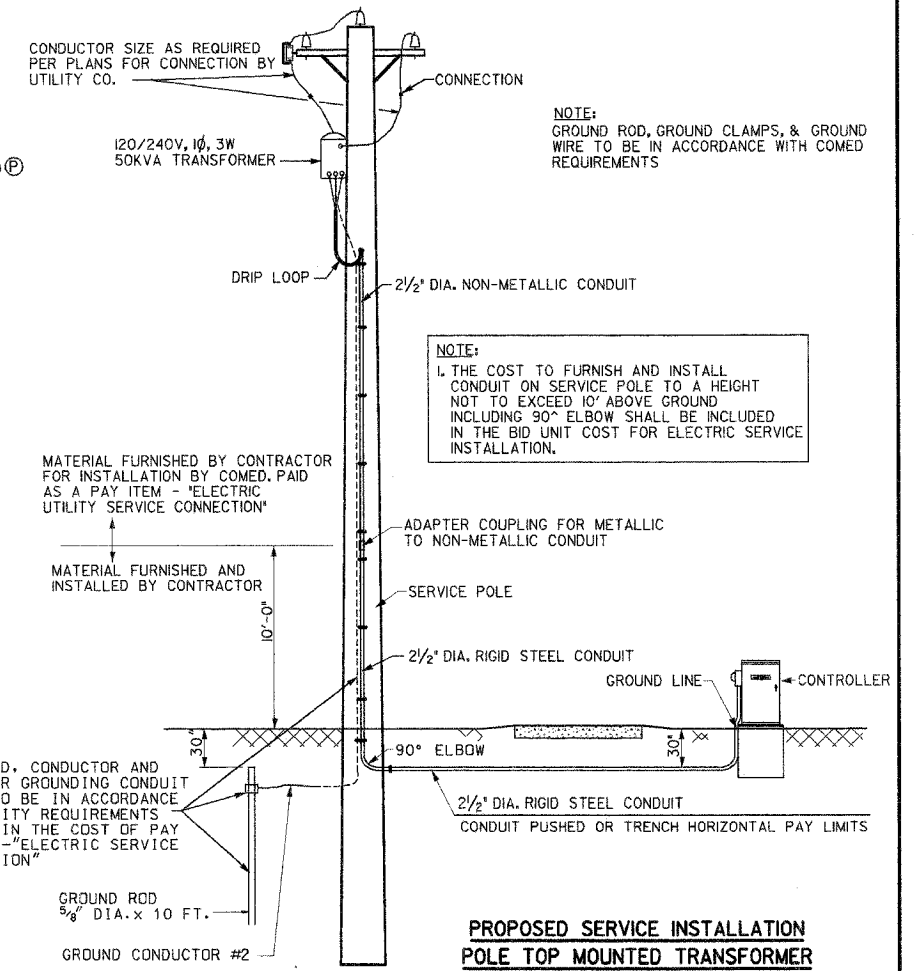
THE CONTROLLER FABRICATION SHALL COMPLY TO ARTICLE 1068.01 OF THE STANDARD SPECIFICATIONS

THE CONTROLLER CABINET DOOR SHOULD OPEN AWAY FROM THE STREET



ONE LINE CIRCUIT DIAGRAM

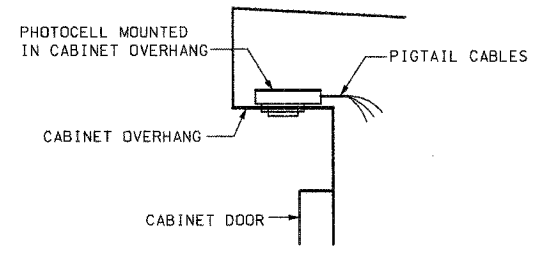
BILL OF MATERIALS		
ITEM	QTY	DESCRIPTION
A	1	MAIN BREAKER 2P/225A C/H ED2225L
B	2	CONTACTOR 2P/100A SQ.D8903PBQ10V38
C	2	BREAKER 1P/15A C/H EHD1015
D	1	SURGE ARRESTOR EDCO SHA2403
E	1	PHOTOCELL FISHER PIERCE FA105M
F	1	ASTRONOMICAL TIME CLK. TORQ DZS200A
G	1	CONTACTOR 2P/150A SQ.D8903PBR10V38
H	1	NEUTRAL BUS
I1	6	BREAKER 2P/30A C/H EHD2030L
I2	12	BREAKER 1P/40A C/H EHD1040L
J		RESERVED
K	1	GROUND BUS
N	1	GFCI RECEPTACLE 20A LEVITON 8899
O	1	DOOR SWITCH MICRO BA2RQ1-A2
P	1	LIGHT FIXTURE LEVITON 29816C
R	2	RELAY MAGNECRAFT W389ACX-9
S	2	H-O-A SWITCH SQ.D 9001 KYK-111
T	1	MILBANK U-4363 METER FITTING
U	1	MARATHON 1452129 SPLICE BLOCK



NOTE:
GROUND ROD, GROUND CLAMPS, & GROUND WIRE TO BE IN ACCORDANCE WITH COMED REQUIREMENTS

NOTE:
1. THE COST TO FURNISH AND INSTALL CONDUIT ON SERVICE POLE TO A HEIGHT NOT TO EXCEED 10' ABOVE GROUND INCLUDING 90° ELBOW SHALL BE INCLUDED IN THE BID UNIT COST FOR ELECTRIC SERVICE INSTALLATION.

PROPOSED SERVICE INSTALLATION POLE TOP MOUNTED TRANSFORMER



PHOTOCELL IN CABINET OVERHANG DETAIL

NOT TO SCALE
 THIS DRAWING IS THE EXCLUSIVE PROPERTY OF SUNJOY INC. AND IS PROVIDED ONLY FOR THE PROJECT LISTED ON THIS DRAWING. THIS DRAWING SHALL NOT BE DUPLICATED, USED OR DISCLOSED, IN WHOLE OR IN PART, FOR ANY PURPOSE WHATSOEVER WITHOUT THE WRITTEN PERMISSION OF SUNJOY INC.
 DETAILS FROM EXCEL LTD - (847) 543-9138

212 TIMBERCREST DRIVE
 SCHAUMBURG, ILLINOIS
 60193-1572

VILLAGE OF CARPENTERSVILLE
 MAIN STREET OVER FOX RIVER

LIGHTING CONTROLLER, SPECIAL

SCALE: NTS
 DATE: 02-05-05
 DRAWN BY: HMG
 CHECKED BY: JS

REVISION 02-26-05