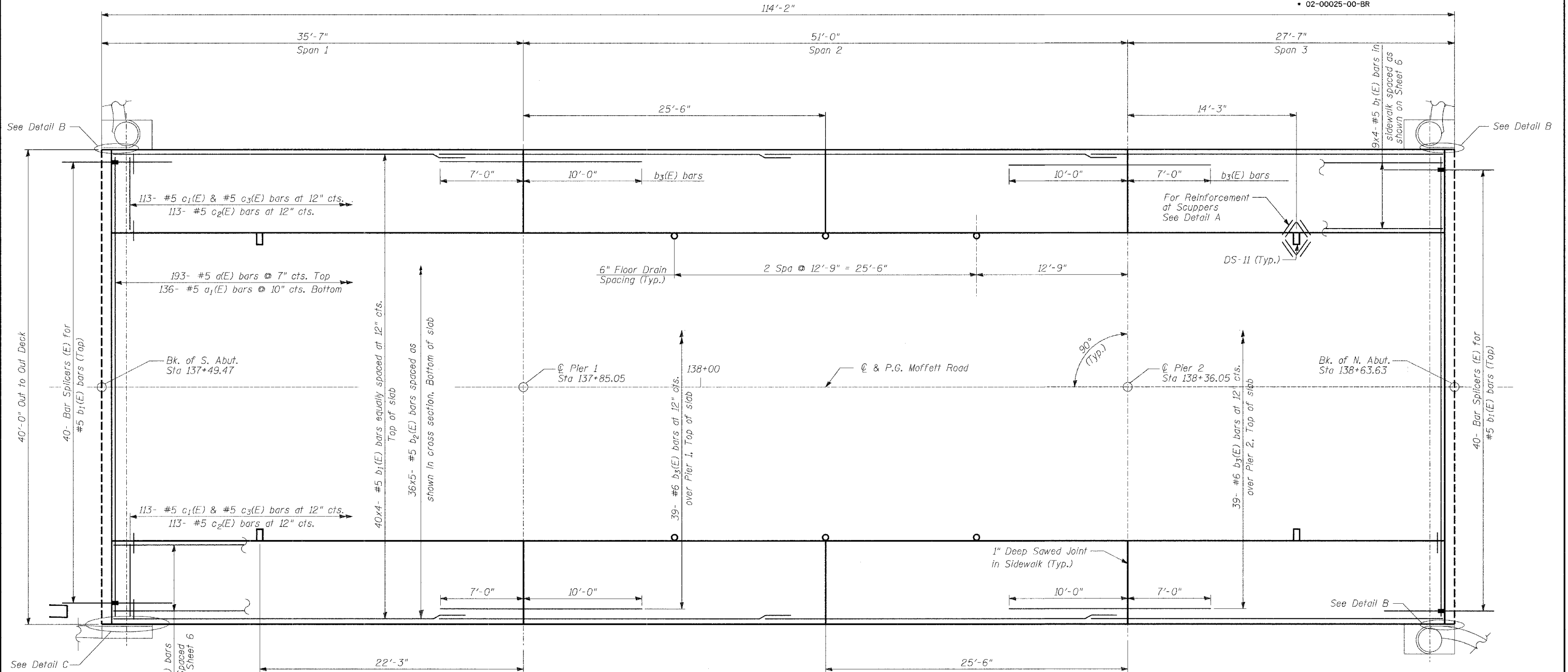
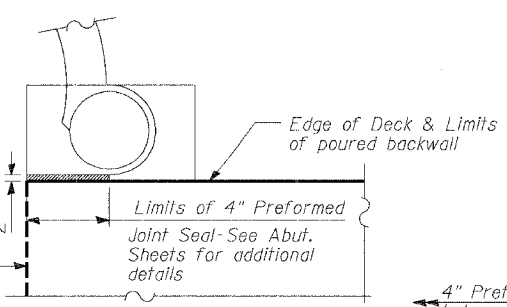


STATE OF ILLINOIS
DEPARTMENT OF TRANSPORTATION

ROUTE NO.	SECTION	COUNTY	TOTAL SHEETS	SHEET NO.	SHEET NO. - 5 30 - SHEETS CONTRACT 83790
2758	*	LAKE	40	15	
FED. ROAD DIST. NO.	ILL. DIST. NO.	FED. AID PROJECT NO.	* 02-00025-00-BR		

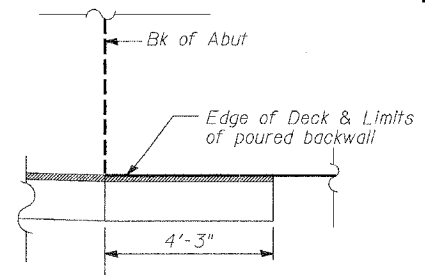


PLAN



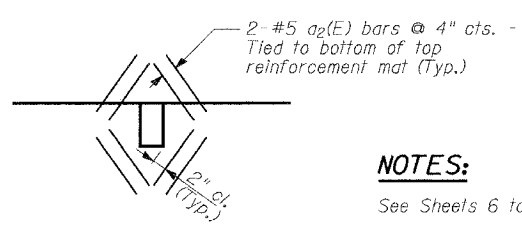
DETAIL B

South Abutment, west edge of deck shown, similar at North Abutment, west edge of deck and east edge of deck



DETAIL C

Note: Work Details B and C with Sheets 16 and 18.



DETAIL A

Cut Longitudinal reinforcement to clear drainage scuppers.

NOTES:

- See Sheets 6 to 10 for additional superstructure details.
- For Bill of Material, See Sheet 6.
- Bars indicated thus: 20 x 3-#5 etc. indicates 20 lines of bars with 3 lengths per line.
- Reinforcement bars designated (E) shall be epoxy coated.
- Minimum lap splice for #5 bars shall be 2'-2".

TYLIN INTERNATIONAL

DESIGNED	- DE
CHECKED	- SP
DRAWN	- DE
CHECKED	- PF

DATE: 02-23-2005

SUPERSTRUCTURE

MOFFETT ROAD OVER
DRAINAGE RAVINE
FAU 2758
LAKE COUNTY
S.N. 049-6803