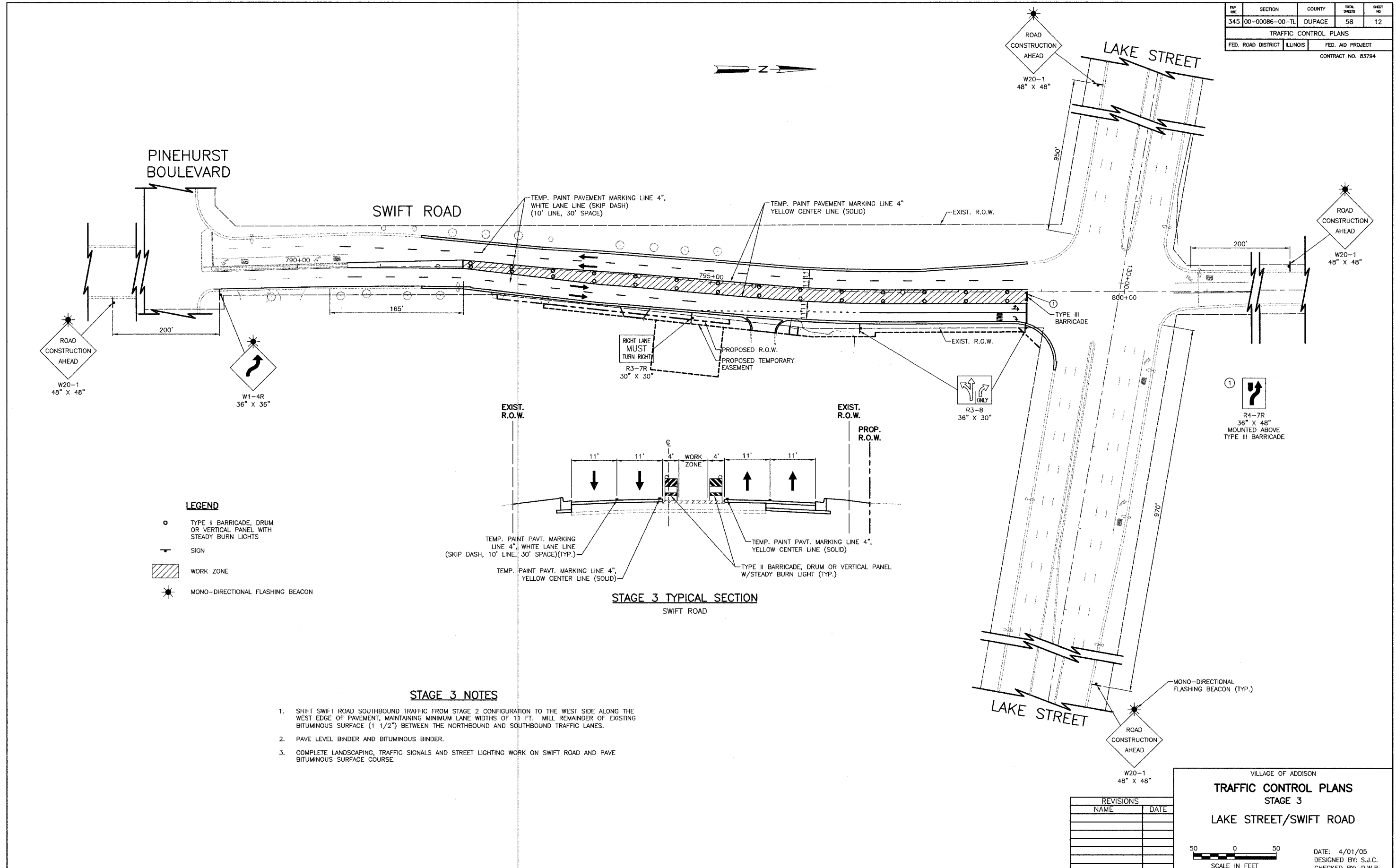


SECTION	COUNTY	TOTAL SHEETS	SHEET NO.
345 00-00086-00-TL	DUPAGE	58	12
TRAFFIC CONTROL PLANS			
FED. ROAD DISTRICT	ILLINOIS	FED. AID PROJECT	
		CONTRACT NO. 83794	



PINEHURST BOULEVARD

SWIFT ROAD

LAKE STREET

LAKE STREET

LEGEND

- TYPE II BARRICADE, DRUM OR VERTICAL PANEL WITH STEADY BURN LIGHTS
- SIGN
- ▨ WORK ZONE
- ★ MONO-DIRECTIONAL FLASHING BEACON

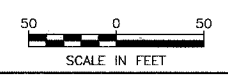
STAGE 3 TYPICAL SECTION
SWIFT ROAD

STAGE 3 NOTES

1. SHIFT SWIFT ROAD SOUTHBOUND TRAFFIC FROM STAGE 2 CONFIGURATION TO THE WEST SIDE ALONG THE WEST EDGE OF PAVEMENT, MAINTAINING MINIMUM LANE WIDTHS OF 11 FT. MILL REMAINDER OF EXISTING BITUMINOUS SURFACE (1 1/2") BETWEEN THE NORTHBOUND AND SOUTHBOUND TRAFFIC LANES.
2. PAVE LEVEL BINDER AND BITUMINOUS BINDER.
3. COMPLETE LANDSCAPING, TRAFFIC SIGNALS AND STREET LIGHTING WORK ON SWIFT ROAD AND PAVE BITUMINOUS SURFACE COURSE.

REVISIONS	
NAME	DATE

VILLAGE OF ADDISON
TRAFFIC CONTROL PLANS
STAGE 3
LAKE STREET/SWIFT ROAD



DATE: 4/01/05
DESIGNED BY: S.J.C.
CHECKED BY: D.W.B.

