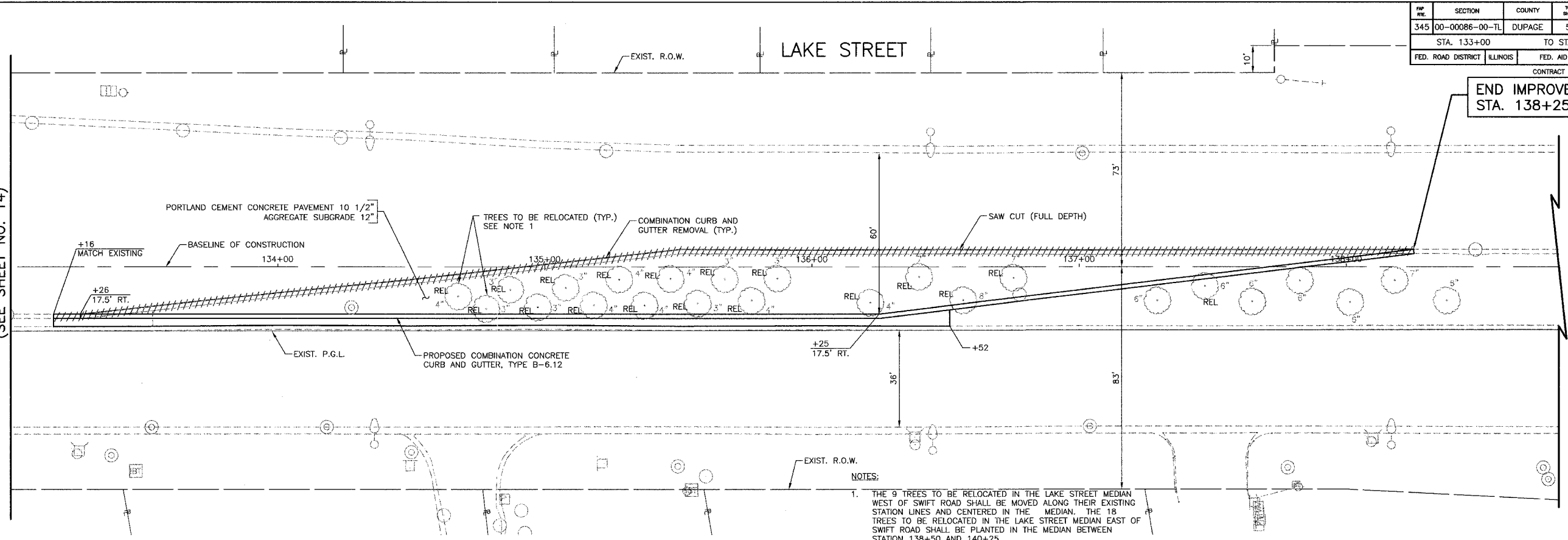


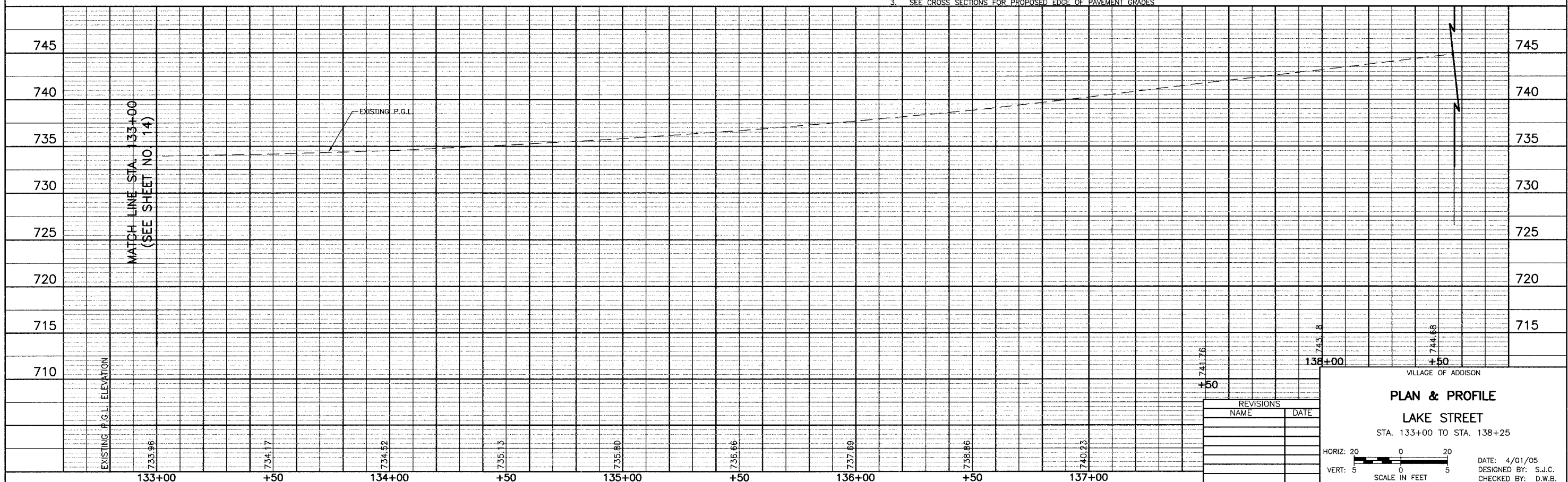
F&P NO.	SECTION	COUNTY	TOTAL SHEETS	SHEET NO.
345	00-00086-00-TL	DUPAGE	58	15
STA. 133+00		TO STA. 138+25		
FED. ROAD DISTRICT ILLINOIS		FED. AID PROJECT		
CONTRACT NO. 83794				

END IMPROVEMENT
STA. 138+25

MATCH LINE STA. 133+00
(SEE SHEET NO. 14)



- NOTES:
- THE 9 TREES TO BE RELOCATED IN THE LAKE STREET MEDIAN WEST OF SWIFT ROAD SHALL BE MOVED ALONG THEIR EXISTING STATION LINES AND CENTERED IN THE MEDIAN. THE 18 TREES TO BE RELOCATED IN THE LAKE STREET MEDIAN EAST OF SWIFT ROAD SHALL BE PLANTED IN THE MEDIAN BETWEEN STATION 138+50 AND 140+25.
 - SEE DRAINAGE AND UTILITIES SHEETS FOR STORM SEWER WORK.
 - SEE CROSS SECTIONS FOR PROPOSED EDGE OF PAVEMENT GRADES.



REVISIONS	
NAME	DATE

VILLAGE OF ADDISON

PLAN & PROFILE

LAKE STREET
STA. 133+00 TO STA. 138+25

HORIZ: 20' 0" 20'
VERT: 5' 0" 5'

SCALE IN FEET

DATE: 4/01/05
DESIGNED BY: S.J.C.
CHECKED BY: D.W.B.