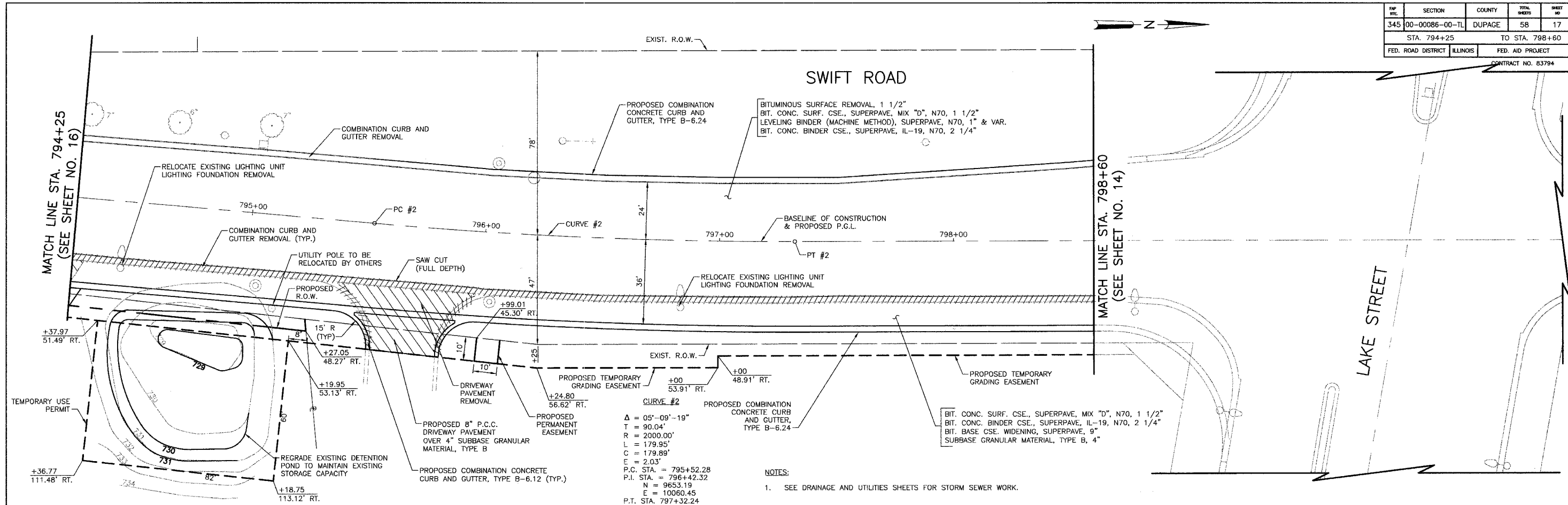
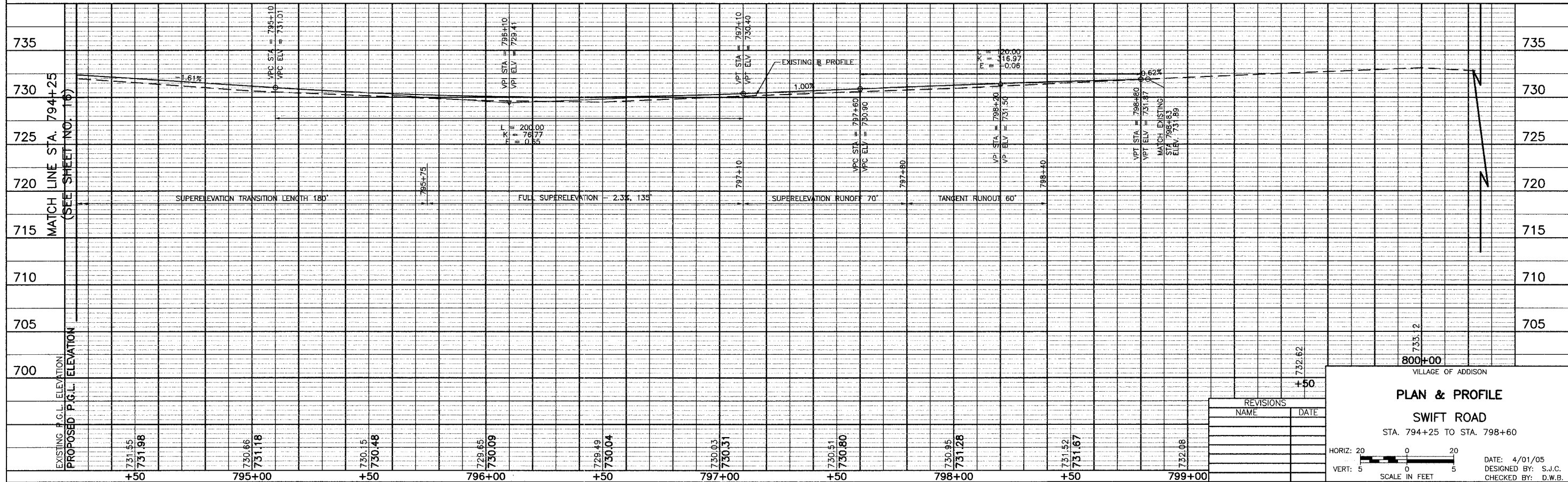


| | | | | |
|--------------------|----------------|------------------|--------------|-----------|
| FED. AID DISTRICT | SECTION | COUNTY | TOTAL SHEETS | SHEET NO. |
| ILLINOIS | 00-00086-00-TL | DUPAGE | 58 | 17 |
| STA. 794+25 | | TO STA. 798+60 | | |
| FED. ROAD DISTRICT | | FED. AID PROJECT | | |
| CONTRACT NO. 83794 | | | | |



CURVE #2
 $\Delta = 05^\circ - 09' - 19''$
 $T = 90.04'$
 $R = 2000.00'$
 $L = 179.95'$
 $C = 179.89'$
 $E = 2.03'$
P.C. STA. = 795+52.28
P.I. STA. = 796+42.32
N = 9653.19
E = 10060.45
P.T. STA. = 797+32.24

- NOTES:**
1. SEE DRAINAGE AND UTILITIES SHEETS FOR STORM SEWER WORK.



VILLAGE OF ADDISON
PLAN & PROFILE
SWIFT ROAD
STA. 794+25 TO STA. 798+60

| REVISIONS | |
|-----------|------|
| NAME | DATE |
| | |
| | |
| | |



DATE: 4/01/05
DESIGNED BY: S.J.C.
CHECKED BY: D.W.B.