

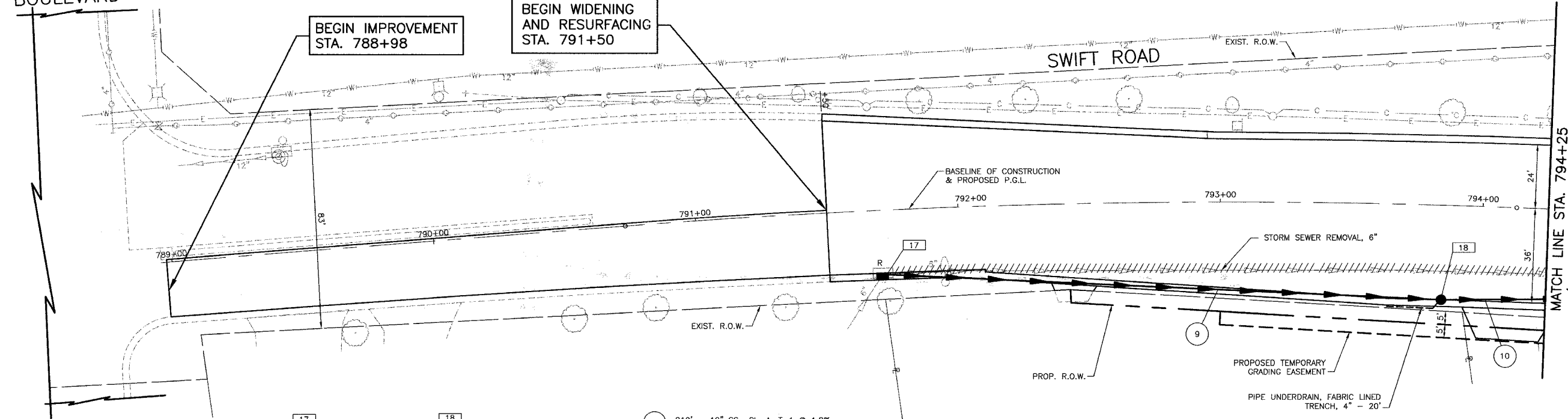
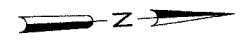
SECTION	COUNTY	TOTAL SHEETS	SHEET NO.
00-00086-00-TL	DUPAGE	58	22
STA. 788+98		TO STA. 794+25	
FED. ROAD DISTRICT	ILLINOIS	FED. AID PROJECT	
CONTRACT NO. 83794			

PINEHURST BOULEVARD

BEGIN IMPROVEMENT
STA. 788+98

BEGIN WIDENING
AND RESURFACING
STA. 791+50

SWIFT ROAD

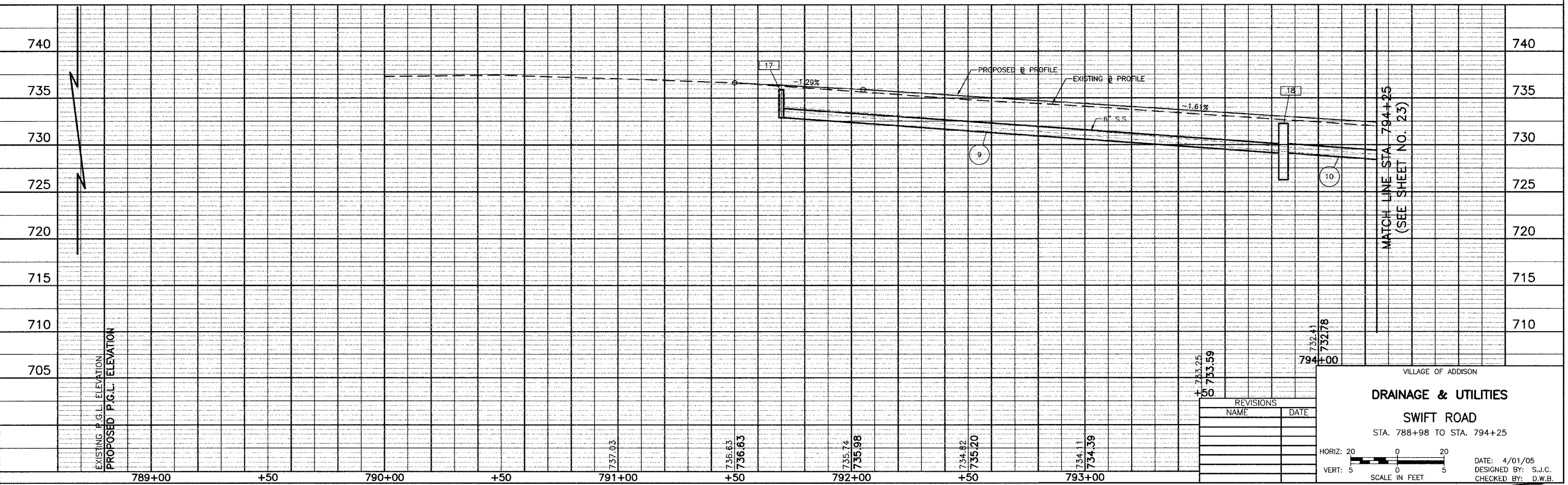


- 17 STA. 791+70, 23.90' RT.
INLET T-A
TYPE 24 F & G
RIM = 735.89
PR. INV = 732.89 (N.)
EX. INV = 733.89 (SE.)
- 18 STA. 793+85, 36' RT.
CB T-A, 4' DIA.
TYPE 24 F & G
RIM = 732.25
INV = 729.11 (S, N)

- 9 210' - 12" SS., CL. A, T-1 @ 1.8%
T.B.F. = 21.0 CU. YD.
- 10 115' - 12" SS., CL. A, T-1 @ 1.8%
T.B.F. = 17.5 CU. YD.

R = REMOVE STRUCTURE
ADJ = ADJUST

MATCH LINE STA. 794+25
(SEE SHEET NO. 23)



MATCH LINE STA. 794+25
(SEE SHEET NO. 23)

REVISIONS	NAME	DATE

VILLAGE OF ADDISON
DRAINAGE & UTILITIES
SWIFT ROAD
STA. 788+98 TO STA. 794+25

HORIZ: 20
VERT: 5
SCALE IN FEET
DATE: 4/01/05
DESIGNED BY: S.J.C.
CHECKED BY: D.W.B.

