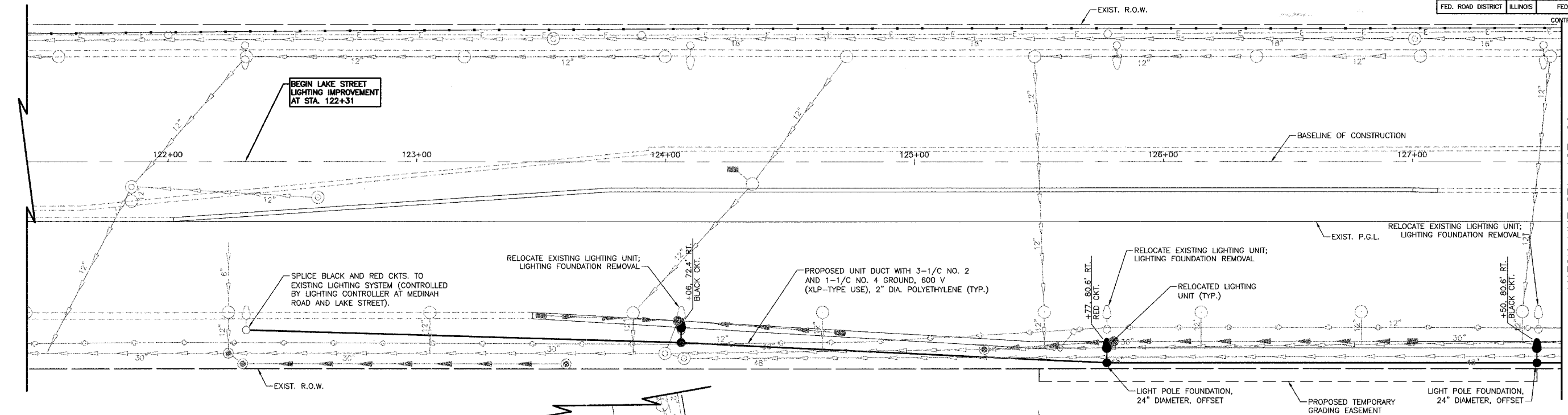
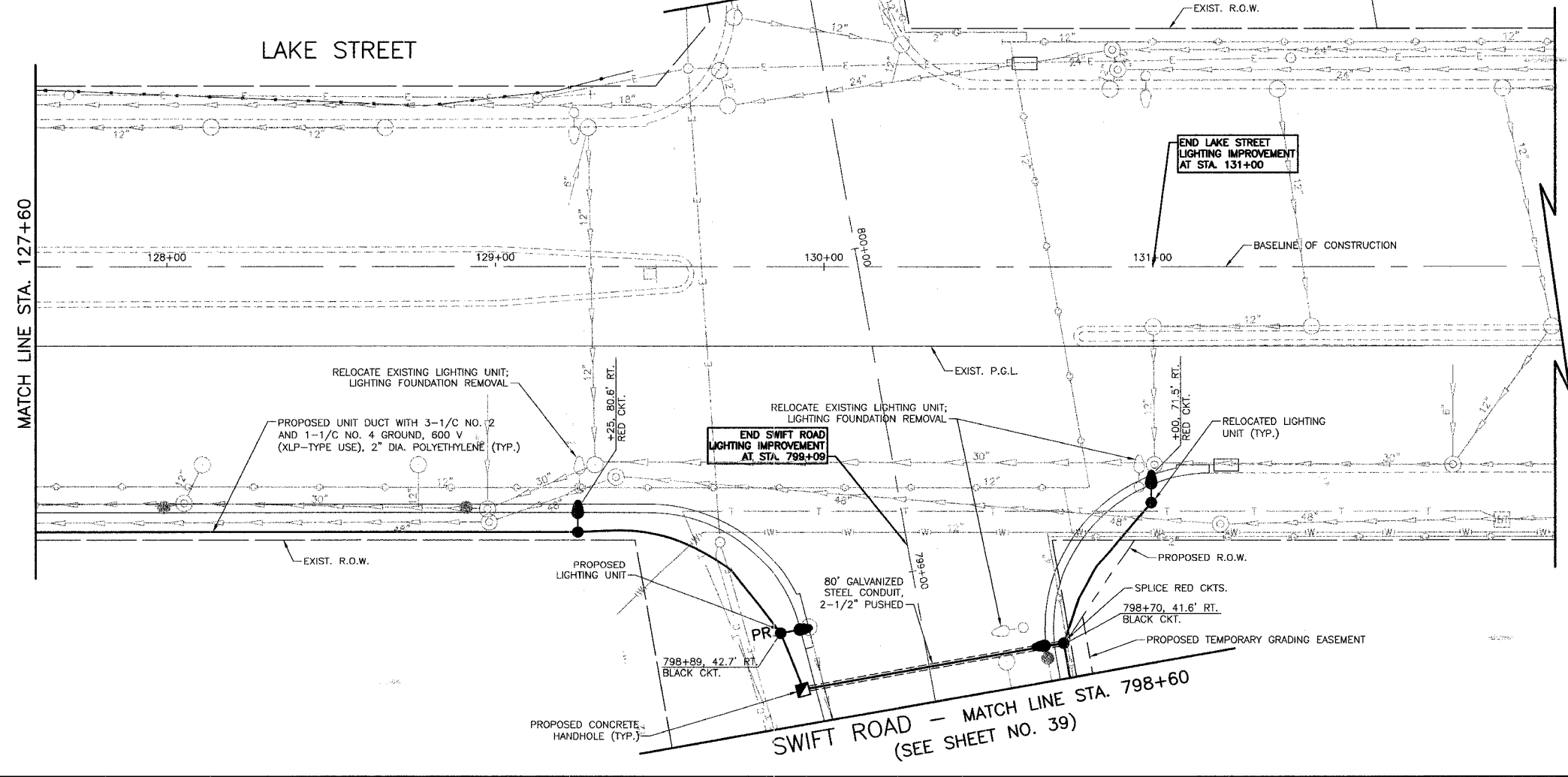


PROJECT NO.	SECTION	COUNTY	TOTAL SHEETS	SHEET NO.
345	00-00086-00-TL	DUPAGE	58	38
FED. ROAD DISTRICT		ILLINOIS	FED. AID PROJECT	
CONTRACT NO. 83794				

LAKE STREET



LAKE STREET



- ### LEGEND
- EXISTING LIGHTING UNIT
LUMINAIRE, HPS, HORIZONTAL MOUNT, 400 WATT
LIGHT POLE, 47.5 FT. MOUNTING HEIGHT, 15 FT. MAST ARM
 - RELOCATED LIGHTING UNIT
 - PROPOSED LIGHTING UNIT (AS SPECIFIED IN PLANS)
LIGHT POLE, ALUMINUM, 47.5 FT. M.H., 15 FT. M.A.
LUMINAIRE, SODIUM VAPOR, HORIZONTAL MOUNT, 400 WATT
 - EXISTING HANDHOLE
 - PROPOSED CONCRETE HANDHOLE
 - PROPOSED GALVANIZED STEEL CONDUIT, 2 1/2" PUSHED OR TRENCH (AS SPECIFIED IN PLANS)
 - PROPOSED UNIT DUCT
UNIT DUCT WITH 3-1/C NO. 2 AND 1-1/C NO. 4 GROUND, 600 V (XLP-TYPE USE), 2" DIA. POLYETHYLENE

- ### NOTES
1. THE INSTALLATION OF CONDUIT SLEEVES AND UNIT DUCTS SHALL BE SEQUENCED WITH THE REPLACEMENT OF THE PROPOSED PAVEMENT INCLUDING DRIVEWAYS AND SIDEWALKS. IF CONDUIT OR UNIT DUCT IS PUSHED BECAUSE FINAL SURFACE IS IN PLACE, THERE WILL BE NO ADDITIONAL COMPENSATION FOR PUSHING THE CONDUIT OR UNIT DUCT.
 2. MULTI-UNIT DUCT RUNS SHALL BE INSTALLED IN COMMON TRENCH AND BACKFILLED. TRENCH AND BACKFILL WILL NOT BE PAID FOR EACH UNIT DUCT OR CONDUIT, BUT WILL BE PAID FOR THE LENGTH OF THE COMMON TRENCH ONLY.
 3. THE EXISTING LAKE ST. AND SWIFT RD. LIGHTING SYSTEM MUST BE KEPT IN OPERATION AT ALL TIMES. SHUTDOWN OF THE EXISTING SYSTEMS FOR SWITCHOVER MUST TAKE PLACE DURING THE DAYLIGHT HOURS AND BE COMPLETED BEFORE DARK.
 4. EXISTING SIGNS TO REMAIN ON EXISTING LIGHT POLES TO BE RELOCATED WILL BE RELOCATED WITH THE LIGHT POLES. THIS WORK SHALL NOT BE PAID SEPARATELY BUT SHALL BE INCIDENTAL TO THE PAY ITEM "RELOCATE EXISTING LIGHTING UNIT".

REVISIONS	
NAME	DATE

VILLAGE OF ADDISON

LIGHTING PLAN

LAKE STREET/SWIFT ROAD

SCALE IN FEET: 0 20

DATE: 4/01/05
DESIGNED BY: S.J.C.
CHECKED BY: D.N.M.

