

INDEX OF SHEETS
FOR INDEX OF SHEET, SEE SHEET NO.2

PROJECT LOCATED IN VILLAGE OF SCHAUMBURG

DESIGN DESIGNATION

MEACHAM ROAD: 5660 (2025) MINOR ARTERIAL 2.10 (PCC-20)
MEACHAM ROAD ADT (2025) 50,000 DESIGN SPEED 50 MPH POSTED SPEED 45 MPH

PROPOSED IMPROVEMENT

THIS PROJECT CONSISTS OF SOUTHBOUND BRIDGE DECK REPLACEMENT, NORTHBOUND BRIDGE DECK PATCHING AND OVERLAYING, NEW APPROACH SLABS AND ALL INCIDENTAL AND COLLATERAL WORK AS NECESSARY TO COMPLETE THE IMPROVEMENT SHOWN HEREIN AND AS DESCRIBED IN THE SPECIAL PROVISIONS.

DESCRIPTION OF PROJECT

MEACHAM ROAD OVER NORTHWEST TOLLWAY
BRIDGE SN 016-0676 (IDOT)
BRIDGE SN 519 (ISTHA)

STATE OF ILLINOIS
DEPARTMENT OF TRANSPORTATION
DIVISION OF HIGHWAYS

PLANS FOR PROPOSED FEDERAL AID HIGHWAY

F.A.U. ROUTE 2585

MEACHAM ROAD OVER NORTHWEST TOLLWAY

SCHAUMBURG SECTION 05-00068-02-BR

PROJECT NO. BHM-8003(496)

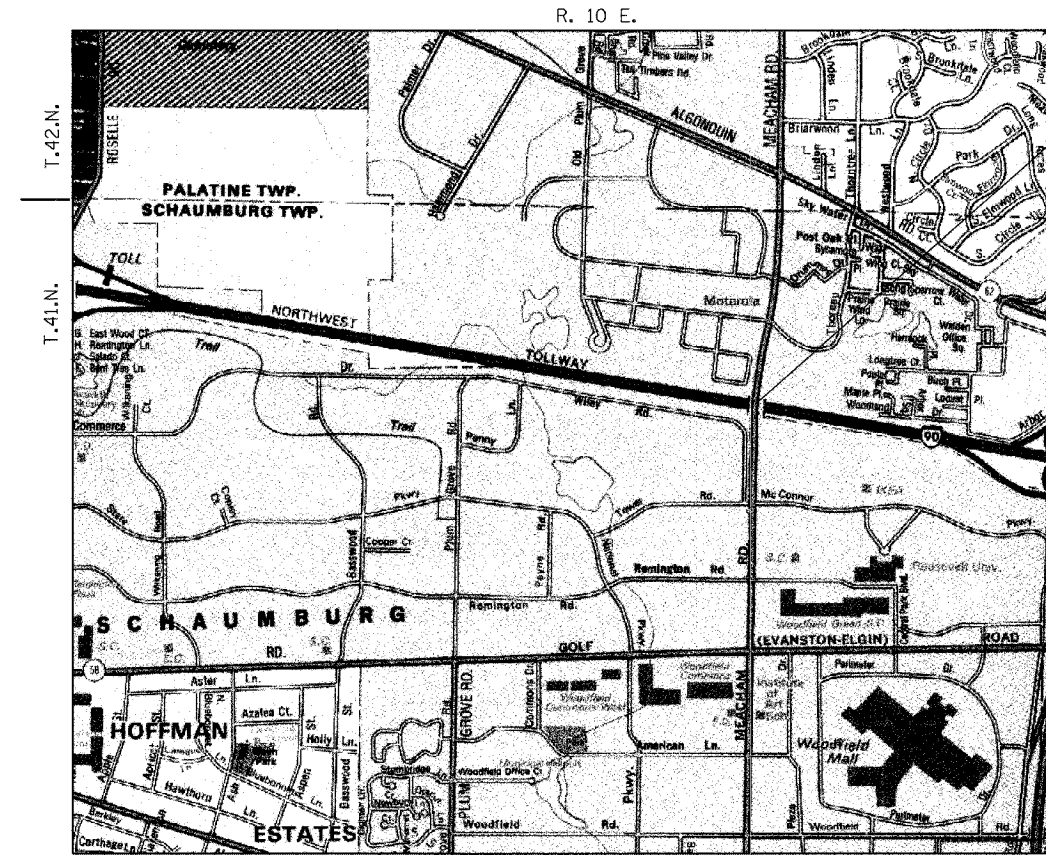
BRIDGE STRUCTURE RECONSTRUCTION

COOK COUNTY

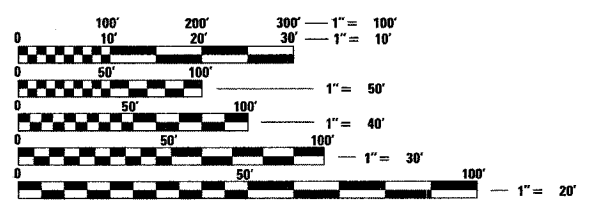
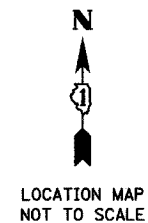
C-91-162-05

F.A.U. RTE.	SECTION	COUNTY	TOTAL SHEETS	SHEET NO.
2585	05-00068-02-BR	COOK	30	1

CONTRACT NUMBER 83800



MEACHAM ROAD OVER
NORTHWEST TOLLWAY
IDOT BRIDGE NO. 016-0676
ISTHA BRIDGE NO. 519
AT MEACHAM ROAD
STA. 285+04.18



FULL SIZE PLANS HAVE BEEN PREPARED USING STANDARD ENGINEERING SCALES. REDUCED SIZED PLANS WILL NOT CONFORM TO STANDARD SCALES. IN MAKING MEASUREMENTS ON REDUCED PLANS, THE ABOVE SCALES MAY BE USED.

J.U.L.I.E.
JOINT UTILITY LOCATION INFORMATION FOR EXCAVATION
1-800-892-0123

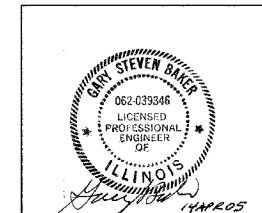
CONTRACT NO. 83800

VILLAGE OF SCHAUMBURG
APPROVED: April 14, 2005
Scott R. Koper
VILLAGE ENGINEER

STATE OF ILLINOIS
DEPARTMENT OF TRANSPORTATION
PASSED: APRIL 13, 2005
[Signature]
BUREAU CHIEF OF LOCAL ROADS AND STREETS
APPROVED: April 19, 2005
Dina O'Keefe, PE
DISTRICT ENGINEER

PRINTED BY THE AUTHORITY OF THE STATE OF ILLINOIS

MACTEC
5440 North Cumberland
Suite 250
Chicago, Illinois 60655
Phone (773) 693-6030
Fax (773) 693-6093
IL License 184-001138
Expires 04/30/2005



CONSULTING ENGINEERS
[Signature]
REGISTERED P.E. STATE OF ILLINOIS
DATE: 14 APR 05
EXPIRATION DATE: 30 NOV 05

FEDERAL AID DESIGN ENGINEER: CHARLES RIDDLE, P.E. (847) 705-4406 SCHAUMBURG, IL
CONSULTANT ENGINEER: MACTEC Engineering and Consulting, Inc.