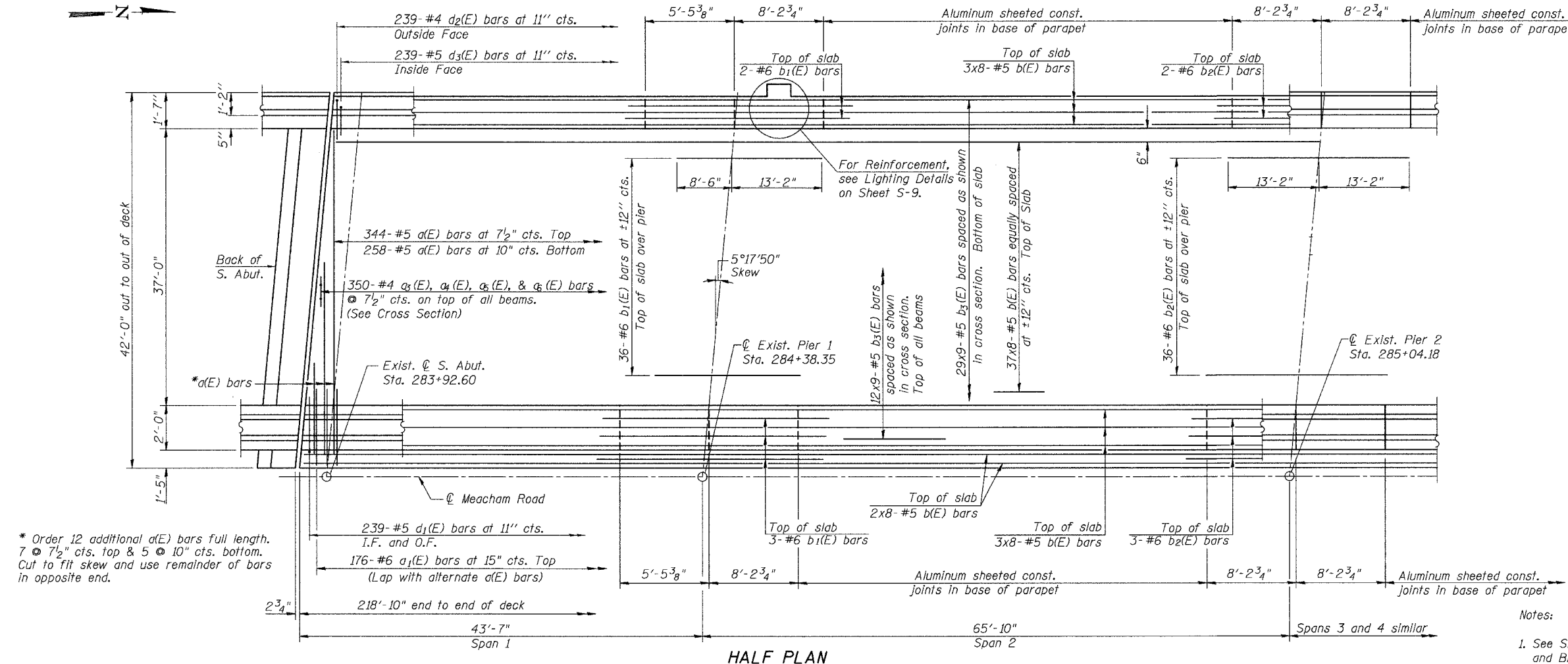
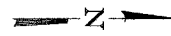


STATE OF ILLINOIS
DEPARTMENT OF TRANSPORTATION

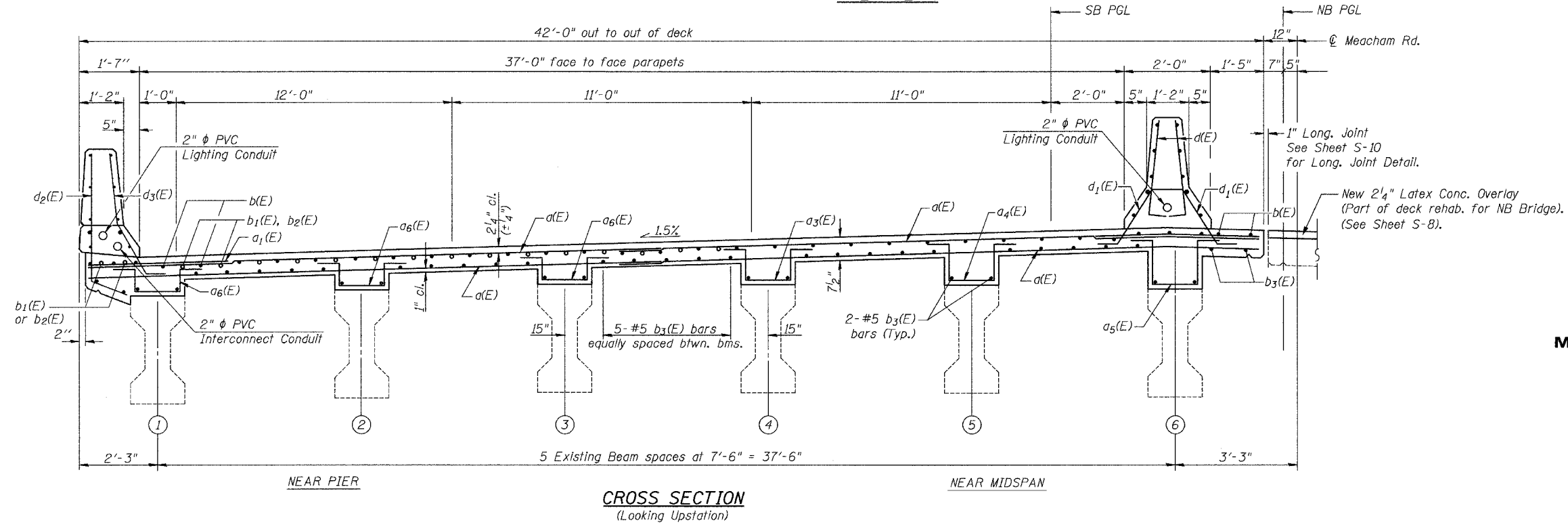
ROUTE NO.	SECTION	COUNTY	TOTAL SHEETS	SHEET NO.
2585	**	COOK	30	16
FED. ROAD DIST. NO. 7		ILLINOIS FED. AID PROJECT		
** 05-00068-02-BR		CONTRACT NO 03800		

SHEET NO. S-7
OF
S-21 SHEETS



* Order 12 additional a(E) bars full length, 7 @ 7 1/2" cts. top & 5 @ 10" cts. bottom. Cut to fit skew and use remainder of bars in opposite end.

HALF PLAN



CROSS SECTION
(Looking Upstation)

- Notes:
1. See Sheet S-9 for superstructure details and Bill of Material.
 2. Reinforcement bars designated (E) shall be epoxy coated.
 3. Bars indicated thus 20 x 3-#5 etc. indicates 20 lines of bars with 3 lengths per line.
 4. See Sheets S-9 for parapet reinforcement.
 5. See Sheet S-10 for median barrier reinforcement.
 6. Work this sheet with Sheet Nos. S-9 and S-10.
 7. Retain Exist. PGI #5 Vert. Bars, sandblast clean, and incorporate into new construction. See Sheet S-4 for details.
 8. I.F. denotes Inside Face.
 9. O.F. denotes Outside Face.

SB DECK PLAN AND SECTION
MEACHAM ROAD OVER NORTHWEST TOLLWAY
F.A.U. ROUTE 2585 SECTION 05-00068-02-BR
COOK COUNTY
STA. 285 + 04.18
STRUCTURE NO. 016-0676

MACTEC DESIGNED: SCHELBAN/AYARGICGLU
DRAWN: SCHELBAN/AYARGICGLU
CHECKED: RLEE