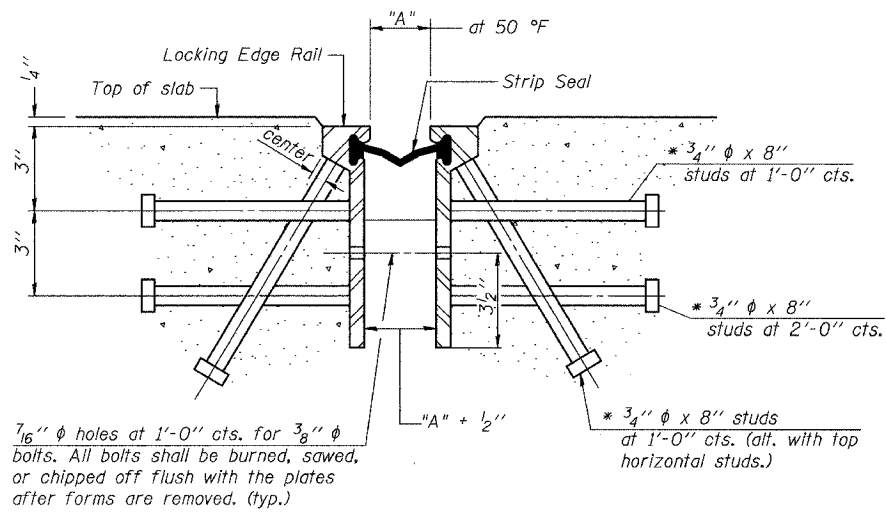


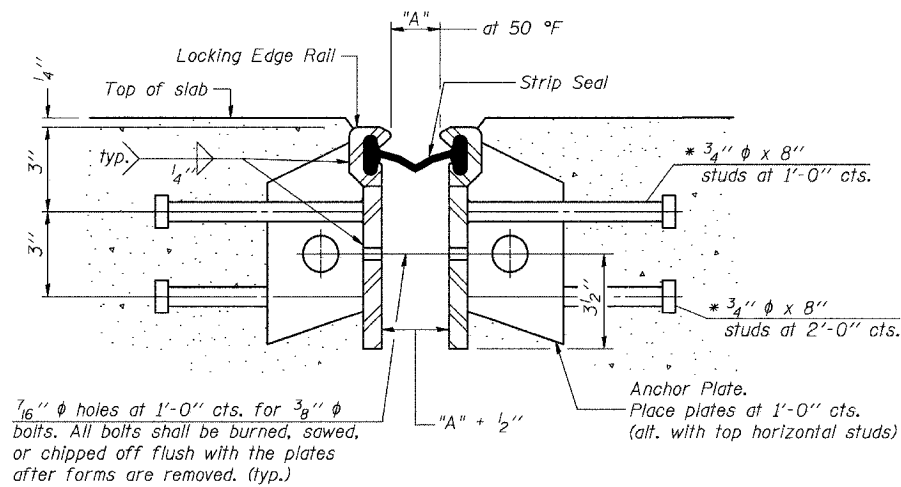
STATE OF ILLINOIS  
DEPARTMENT OF TRANSPORTATION

|                       |          |                  |              |           |                                     |    |
|-----------------------|----------|------------------|--------------|-----------|-------------------------------------|----|
| ROUTE NO.             | SECTION  | COUNTY           | TOTAL SHEETS | SHEET NO. | SHEET NO. S-12<br>OF<br>S-21 SHEETS |    |
| F.A.U. RTE.           | 2585     | **               | COOK         | 30        |                                     | 21 |
| FED. ROAD DIST. NO. 7 | ILLINOIS | FED. AID PROJECT |              |           |                                     |    |

\*\* 05-00068-02-BR CONTRACT NO 83800



| Required Strip Seal rated movement | "A"    |
|------------------------------------|--------|
| 1"                                 | 1 1/8" |
| 2"                                 | 1 3/4" |



GENERAL NOTES

The strip seal shall be made continuous and shall have a minimum thickness of 1/4". The configuration of the strip seal shall match the configuration of the Locking Edge Rails.

The height and thickness of the Locking Edge Rails shown are minimum dimensions. The actual configuration of the Locking Edge Rails and matching strip seal may vary from manufacturer to manufacturer. Flanged edge rails will not be allowed.

Locking Edge Rails may be spliced at slope discontinuities and stage construction joints.

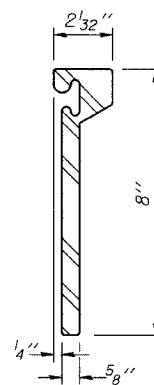
The manufacturer's recommended installation methods shall be followed.

The joint opening and deck dimensions detailed on the superstructure are based on a preformed joint seal. If the contractor elects to use the alternate strip seal joint, the opening and deck dimensions shall be modified according to the dimensions detailed on this sheet. Required modifications shall be made at no additional cost to the State.

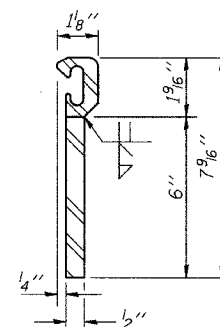
SECTION THRU ROLLED RAIL EXP. JOINT  
(1700 Studs Required)

\* Granular or solid flux filled headed studs conforming to Article 1006.32 of the Std. Specs., automatically end welded.

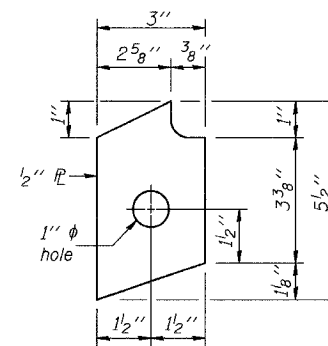
SECTION THRU WELDED RAIL EXP. JOINT  
(1020 Studs Required)  
(680 Anchor Plates Required)



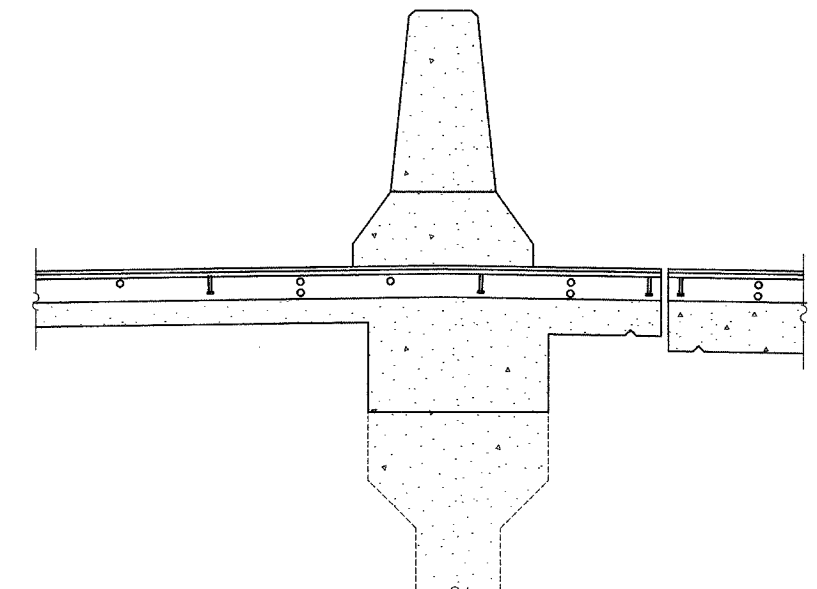
ROLLED (EXTRUDED) RAIL



WELDED RAIL

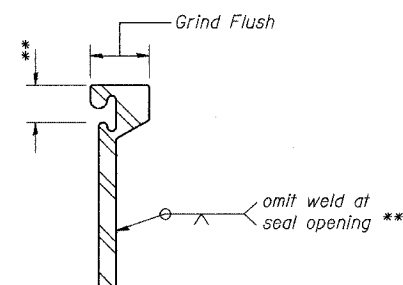


ANCHOR PLATE  
(for welded rail)



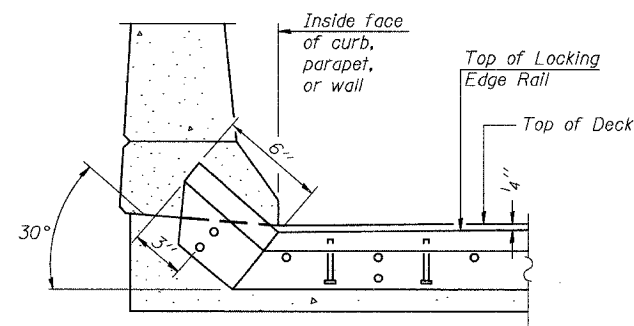
AT MEDIAN

LOCKING EDGE RAILS

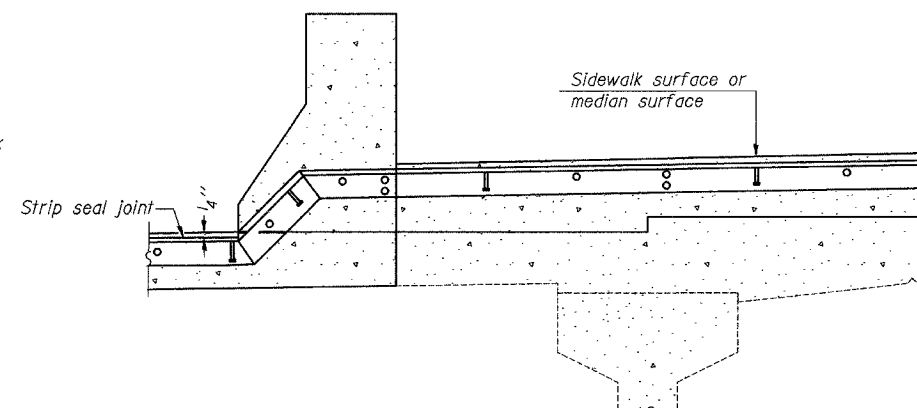


LOCKING EDGE RAIL SPLICE

The inside of the locking edge rail groove shall be free of weld residue.



AT CURB, PARAPET, OR WALL



AT SIDEWALK

TYPICAL END TREATMENTS

BRIDGE JOINT SYSTEM - EXPANSION  
(ALTERNATE-STRIP SEAL)  
MEACHAM ROAD OVER NORTHWEST TOLLWAY  
F.A.U. ROUTE 2585 SECTION 05-00068-02-BR  
COOK COUNTY

STA. 285 + 04.18

STRUCTURE NO. 016-0676



DESIGNED:  
DRAWN: SCHELBIAN/AYARGICOLU  
CHECKED: RLEE