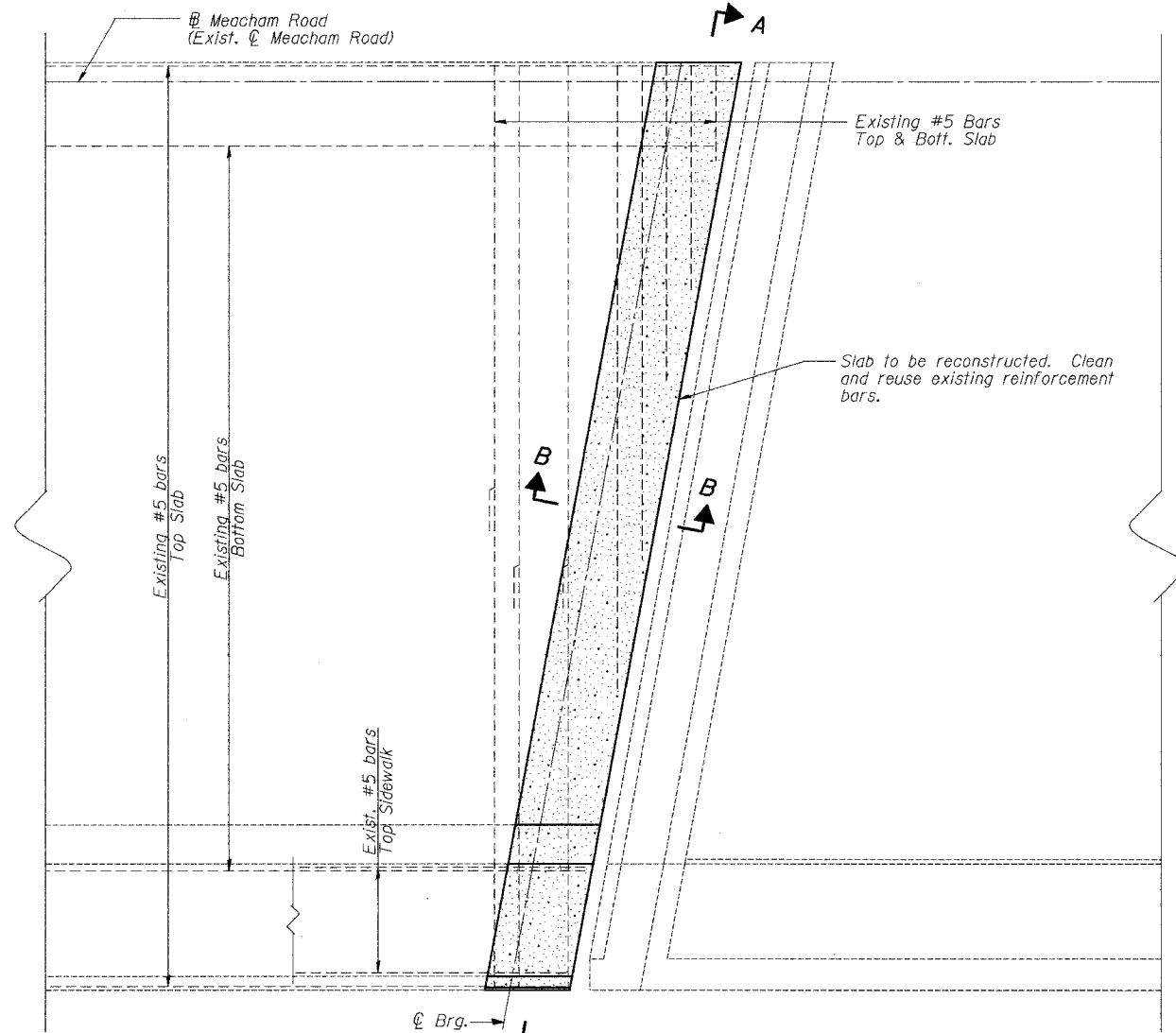


STATE OF ILLINOIS  
DEPARTMENT OF TRANSPORTATION

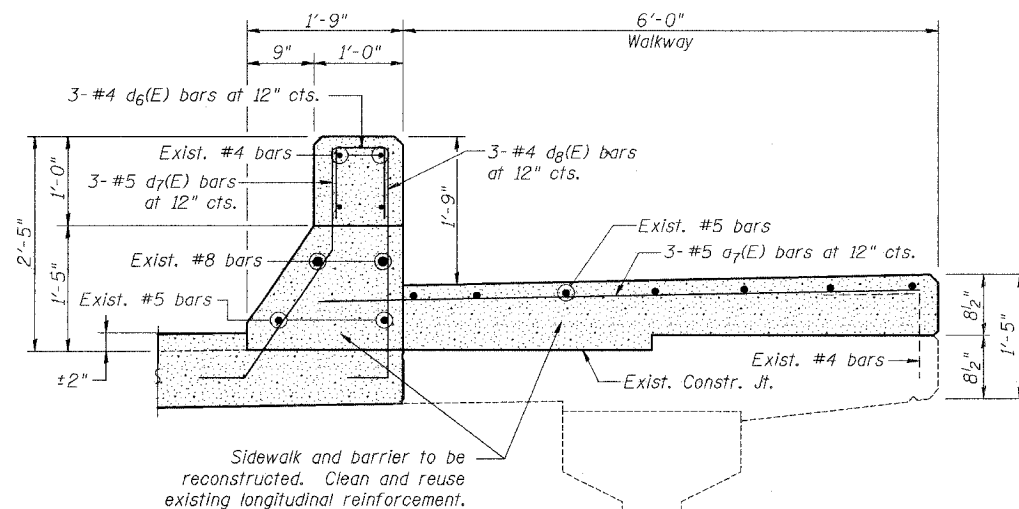
|                       |          |                  |                             |           |
|-----------------------|----------|------------------|-----------------------------|-----------|
| ROUTE NO.             | SECTION  | COUNTY           | TOTAL SHEETS                | SHEET NO. |
| FALL RTE. 2585        | **       | COOK             | 30                          | 24        |
| FED. ROAD DIST. NO. 7 | ILLINOIS | FED. AID PROJECT | CONTRACT No. 05-00068-02-BR |           |

SHEET NO. S-15  
OF  
S-21 SHEETS

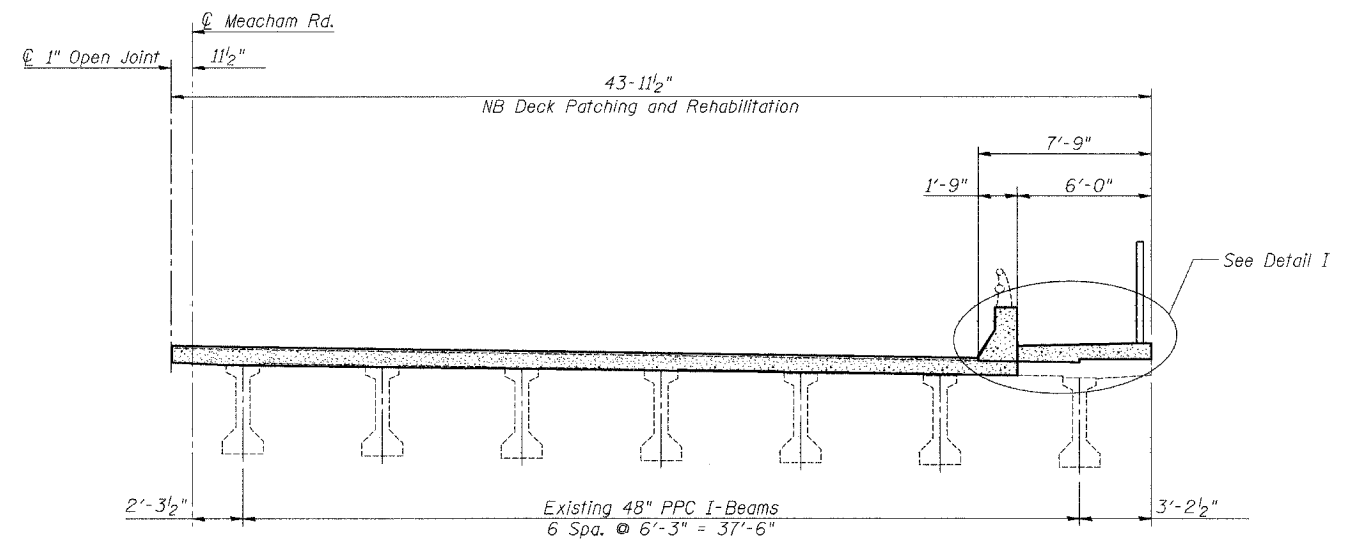


**NORTHBOUND DECK**

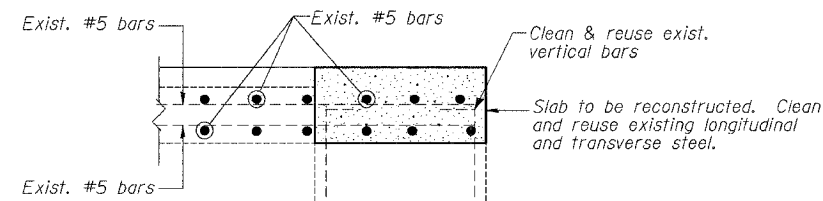
(North section is shown. South section is similar.)



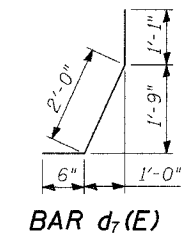
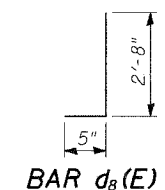
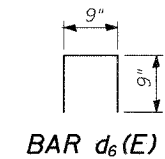
**DETAIL I**



**SECTION A-A**



**SECTION B-B**



**BILL OF MATERIAL**

| Bar                              | No. | Size | Length | Shape |
|----------------------------------|-----|------|--------|-------|
| $a_7(E)$                         | 3   | #5   | 6'-8"  | —     |
| $d_6(E)$                         | 3   | #4   | 2'-3"  | □     |
| $d_7(E)$                         | 3   | #5   | 3'-7"  | —     |
| $d_8(E)$                         | 3   | #4   | 3'-1"  | —     |
| Reinforcement Bars, Epoxy Coated |     |      | Lbs.   | 43    |

- Notes:
1. Reinforcement bars designated (E) shall be epoxy coated.
  2. Work this sheet with Sheet No. S-16.

- Notes:
1. Existing reinforcement shall be sandblasted clean and incorporated into new construction. Cost shall be included in CONCRETE SUPERSTRUCTURE on Sht. S-16.
  2. Work this sheet with Sheet No. S-16.
  3. For details of expansion joint, see sheets S-11 and S-12.

**STRUCTURAL DETAILS I**  
**MEACHAM ROAD OVER NORTHWEST TOLLWAY**  
**F.A.U. ROUTE 2585 SECTION 05-00068-02-BR**  
**COOK COUNTY**  
**STA. 285 + 04.18**

**STRUCTURE NO. 016-0676**



DESIGNED: SCHELBAN/AYARGICOLU  
DRAWN: SCHELBAN/AYARGICOLU  
CHECKED: RLEE