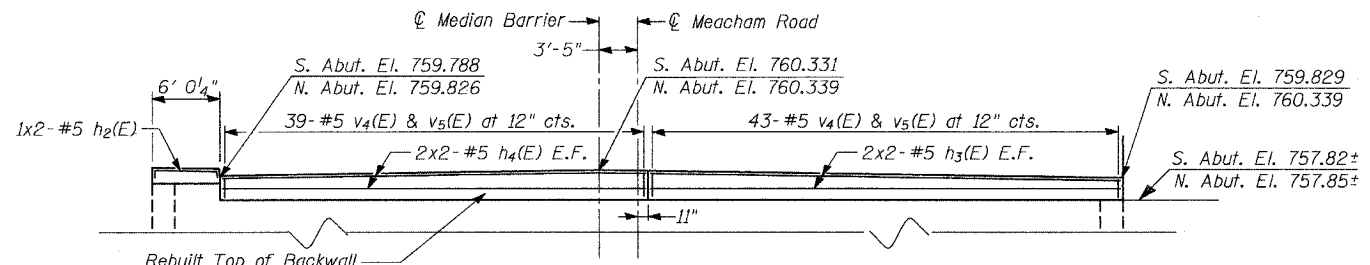
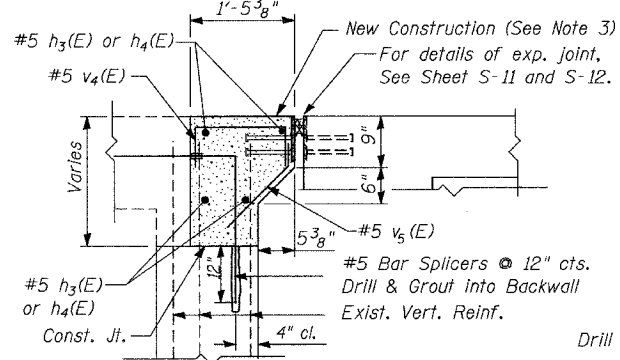


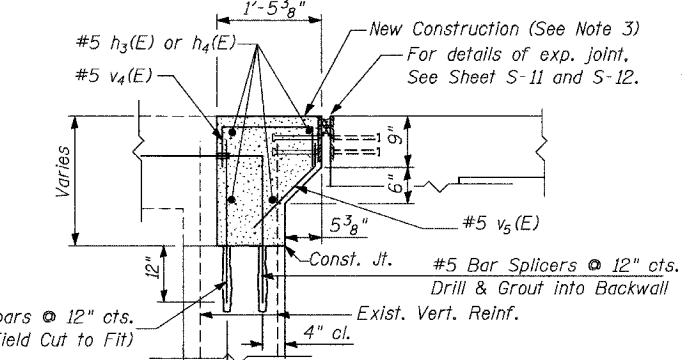
**ABUTMENT PLAN**  
(South Abutment is shown. North Abutment is similar.)



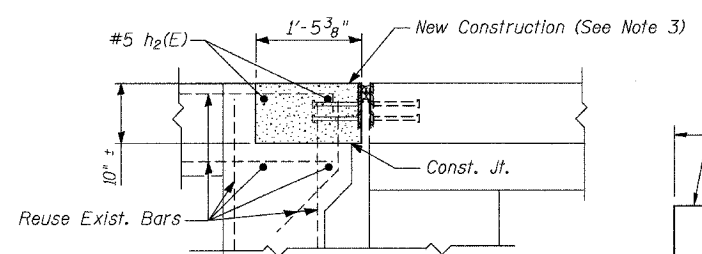
**ABUTMENT BACKWALL ELEVATION**  
(Partial Elevation of South Abutment is shown. North Abutment is similar.)



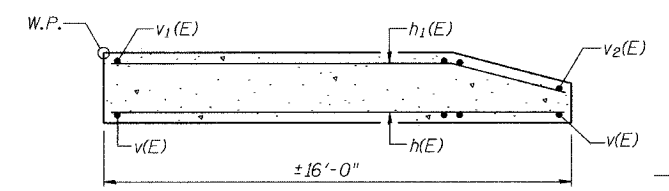
**SECTION B-B**  
At Exist. SB & NB Roadway



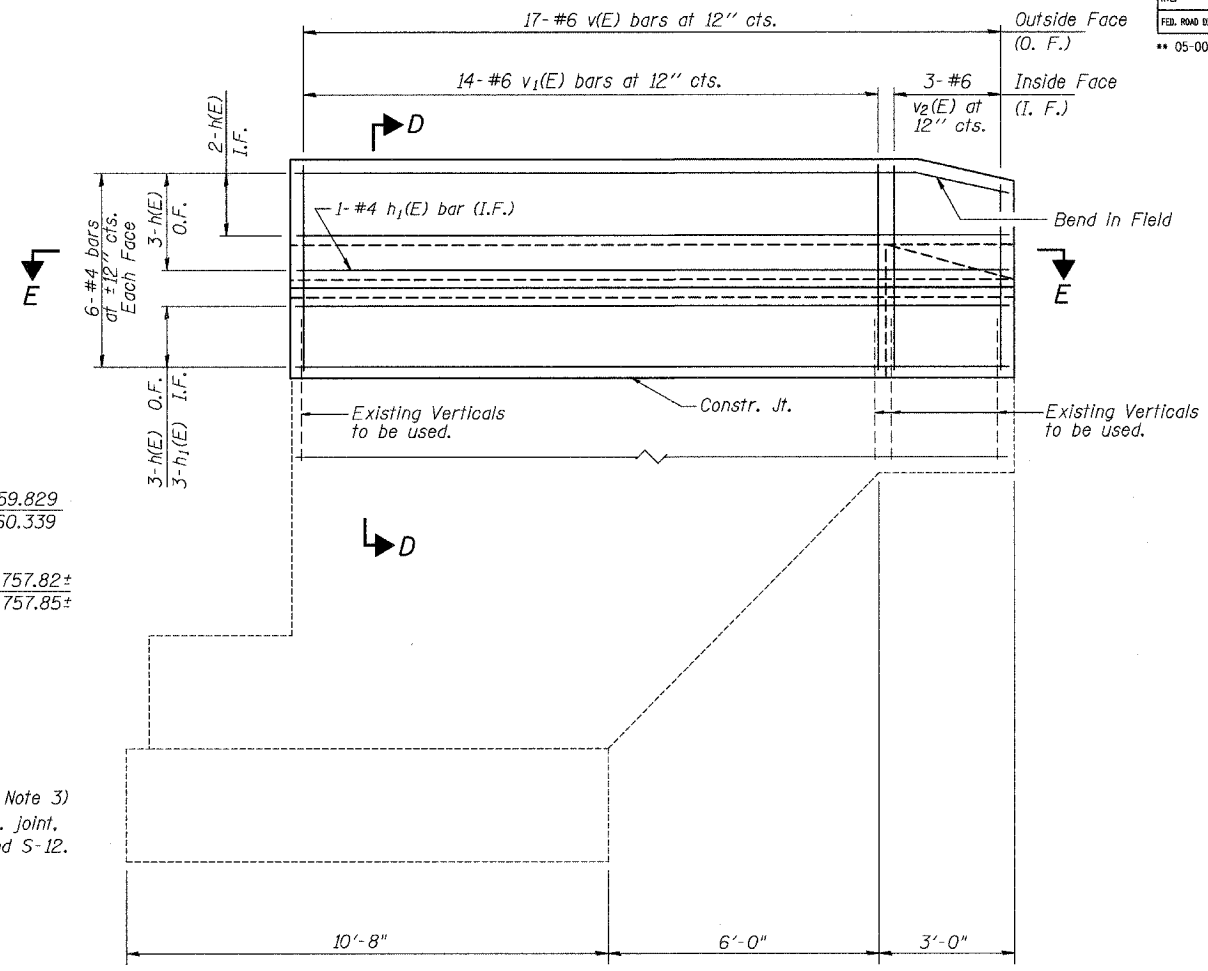
**SECTION A-A**  
At Exist. Median and Sidewalk



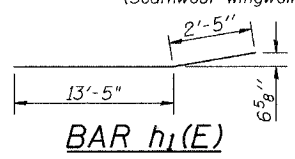
**SECTION C-C**  
At East Sidewalk



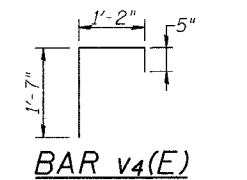
**SECTION E-E**



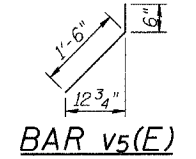
**WINGWALL ELEVATION**  
(Southwest Wingwall reinforcement shown. Northwest Wingwall is similar.)



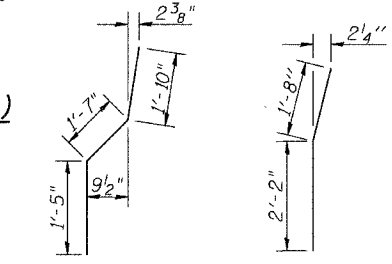
**BAR h1(E)**



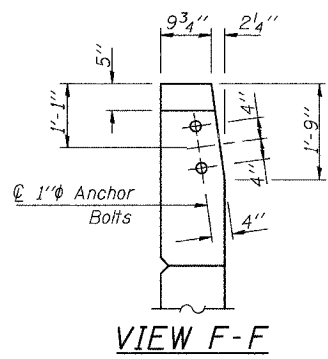
**BAR v4(E)**



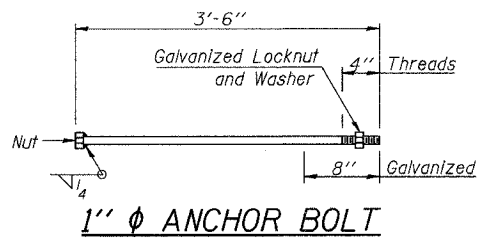
**BAR v5(E)**



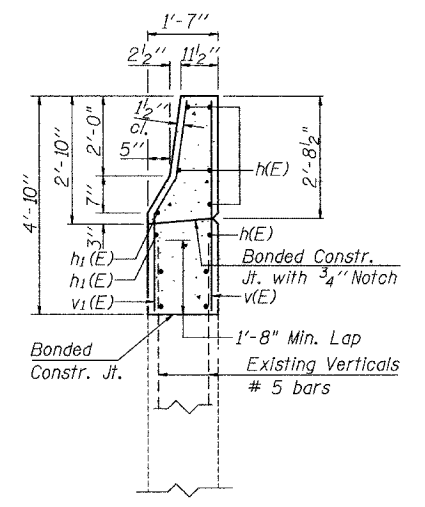
**BAR v1(E) BAR v2(E)**



**VIEW F-F**



**1" ANCHOR BOLT**



**SECTION D-D**

**BILL OF MATERIAL**

Bar	No.	Size	Length	Shape
v(E)	34	#6	4'-7"	—
v1(E)	28	#6	4'-10"	—
v2(E)	6	#6	3'-10"	—
v3(E)	38	#5	3'-4"	—
v4(E)	164	#5	3'-2"	—
v5(E)	164	#5	2'-0"	—
h(E)	16	#4	15'-9"	—
h1(E)	8	#4	15'-10"	—
h2(E)	4	#5	7'-11"	—
h3(E)	16	#5	22'-2"	—
h4(E)	16	#5	20'-1"	—
Reinforcement Bars, Epoxy Coated		Lbs.	2,479	
Concrete Superstructure		Cu. Yds.	24.6	
Concrete Structures		Cu. Yds.	7.3	

- Notes:
1. Reinforcement bars designated (E) shall be epoxy coated.
  2. Bars indicated thus 1 x 2-#5 etc. indicates 1 line of bars with 2 lengths per line.
  3. Work this sheet with Sheet No. S-15.
  4. The hatched area to be poured after the expansion joint has been adjusted. Quantity of concrete is included with Concrete Superstructure.

**STRUCTURAL DETAILS II**  
**MEACHAM ROAD OVER NORTHWEST TOLLWAY**  
**F.A.U. ROUTE 2585 SECTION 05-00068-02-BR**  
**COOK COUNTY**  
**STA. 285 + 04.18**  
**STRUCTURE NO. 016-0676**

**MACTEC** DESIGNED: SCHELBAN/AYARGICOGU  
DRAWN: SCHELBAN/AYARGICOGU  
CHECKED: RLEE