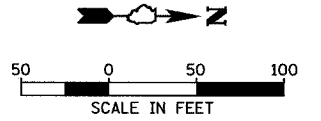
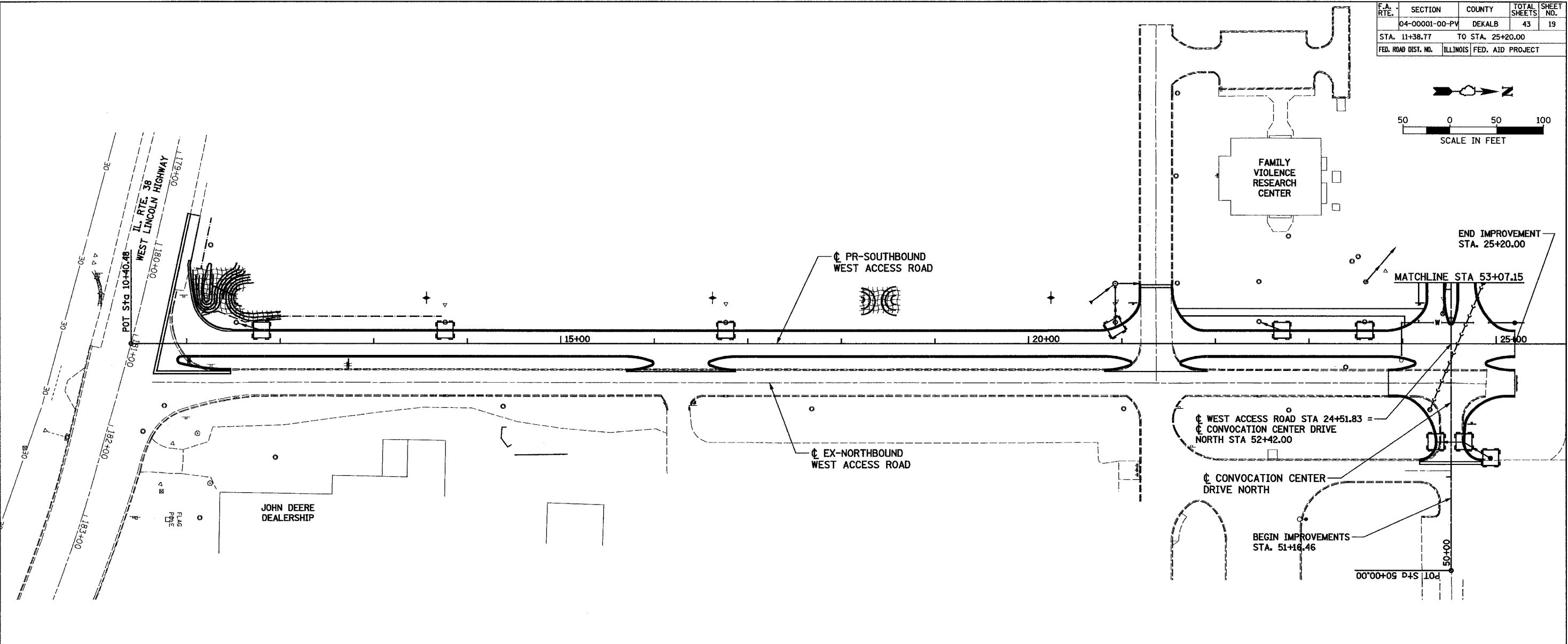


F.A. RTE.	SECTION	COUNTY	TOTAL SHEETS	SHEET NO.
	04-00001-00-PV	DEKALB	43	19
STA. 11+38.77		TO STA. 25+20.00		
FED. ROAD DIST. NO.		ILLINOIS FED. AID PROJECT		



Hanson Professional Services Inc.
Copyright Hanson Professional Services Inc. 2005

LAYOUT RLA 01/03/05 mmh
DRAWN RLA 01/18/05 04/14/2005
REVIEWED MGD 01/18/05 1204205147899 CIVIL SHEET C-08ECP-297



LEGEND:

- ◆ DITCH CHECK
- SEDIMENT BARRIER
- ▨ EROSION CONTROL BLANKET
- INLET SEDIMENT BARRIER

REVISIONS	
NAME	DATE

ILLINOIS DEPARTMENT OF TRANSPORTATION
SECTION 04-00001-00-PV
DEKALB COUNTY
NORTHERN ILLINOIS UNIVERSITY WEST ACCESS ROAD
TEMPORARY EROSION CONTROL
SCALE: VERT. DRAWN BY RLA
 HORIZ. CHECKED BY MGD
DATE 04/05/05