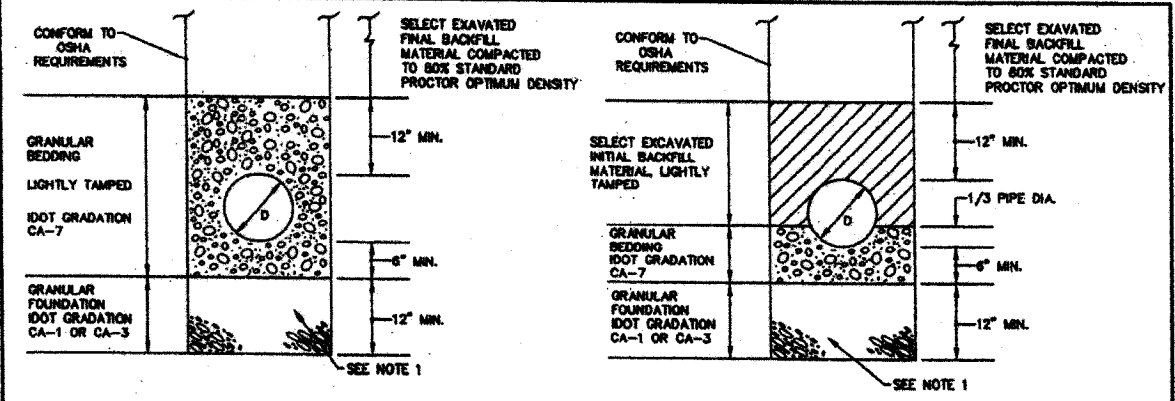
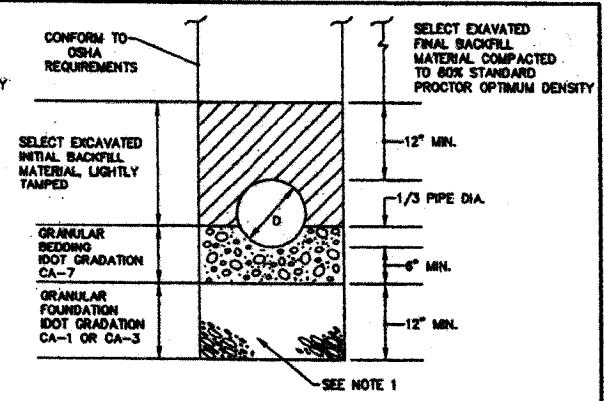


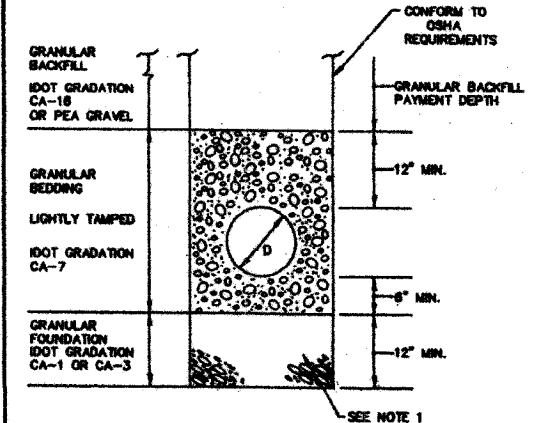
TOTAL SHEETS	43	SHEET NO.	42
PROJECT	M-5017(35)		
Sheet 1 of 2			



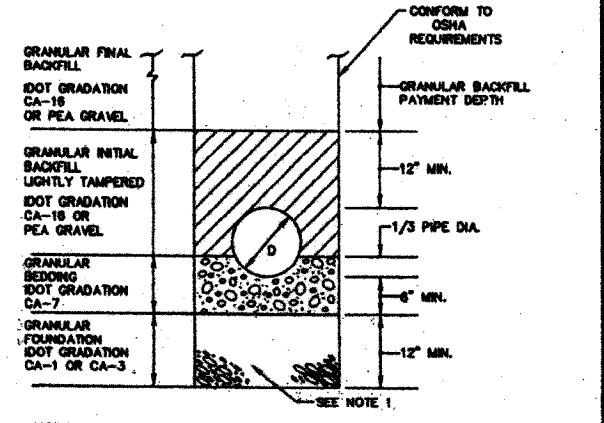
BEDDING AND BACKFILL REQUIREMENTS FOR POLYVINYL CHLORIDE (PVC) SEWERS IN NON-STRUCTURAL LOCATIONS



BEDDING AND BACKFILL REQUIREMENTS FOR DUCTILE IRON PIPE SEWERS IN NON-STRUCTURAL LOCATIONS

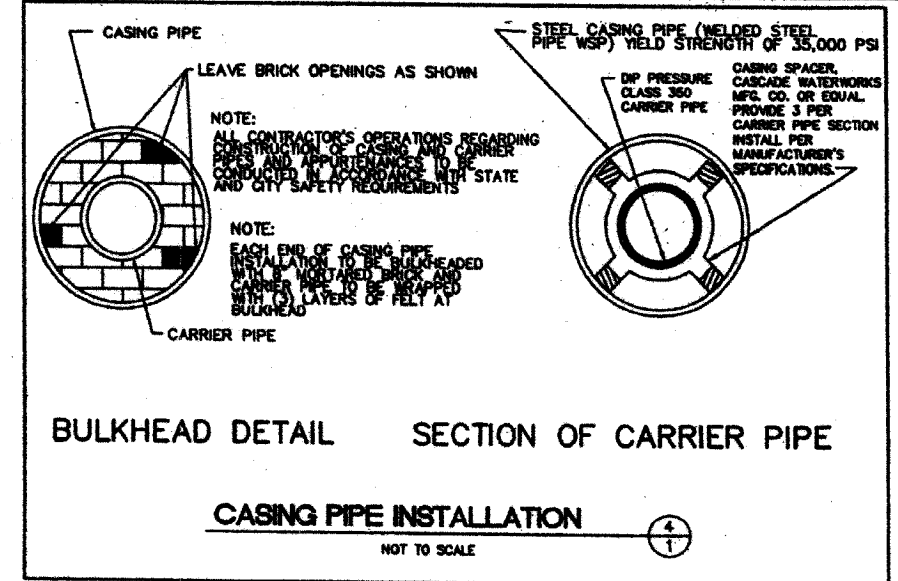


BEDDING AND BACKFILL REQUIREMENTS FOR POLYVINYL CHLORIDE (PVC) SEWERS IN STRUCTURAL LOCATIONS

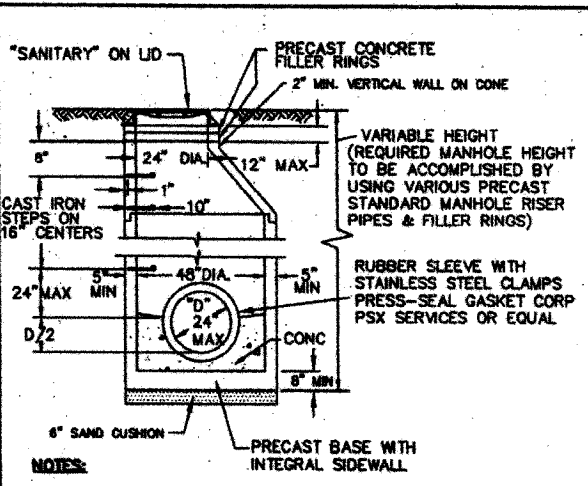


BEDDING AND BACKFILL REQUIREMENTS FOR DUCTILE IRON PIPE SEWERS IN STRUCTURAL LOCATIONS

NOTE 1
CONSTRUCT GRANULAR FOUNDATION WHERE UNSUITABLE MATERIAL OR WET CONDITIONS ARE ENCOUNTERED AT BOTTOM OF TRENCH

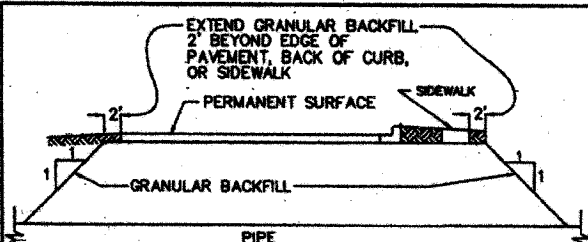


BULKHEAD DETAIL SECTION OF CARRIER PIPE
CASING PIPE INSTALLATION
NOT TO SCALE



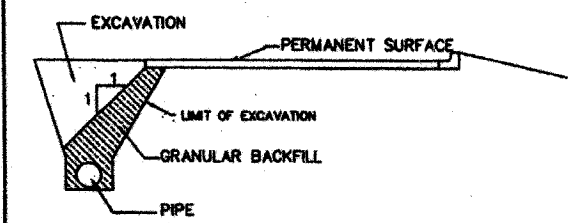
- NOTES:**
- ENTIRE EXTERIOR OF MANHOLE TO BE COATED WITH BITUMASTIC COATING.
 - MANHOLE CONSTRUCTION SHALL CONFORM TO ASTM C478, LATEST REVISION. CONCENTRIC CONES WILL NOT BE ALLOWED.
 - ALL JOINTS SHALL BE SEALED WATER-TIGHT BY MEANS OF E-Z STRK, KENT-SEAL OR RUB R NEK (INCLUDING BOTTOM OF CAST IRON FRAME AND PRECAST CONCRETE FILLER RINGS).
 - MANHOLE FRAME & LID SHALL BE NEENAH R-1015-2000, EAST JORDAN WORKS 1060 OR APPROVED EQUAL WITH SELF-SEALING LID WITH CONCEALED PICKHOLES.
 - CONSTRUCT FLEXIBLE WATERTIGHT CHIMNEY SEAL PER ①/②
 - FOR NEW CONNECTIONS TO EXISTING MANHOLES, CORE DRILL OPENING & INSTALL WATERTIGHT PIPE TO MANHOLE SEAL, LINK SEAL OR EQUAL.
 - STEPS SHALL BE POLYPROPYLENE COATED STEEL REINFORCED RODS.

SANITARY MANHOLE
NO SCALE ②/①

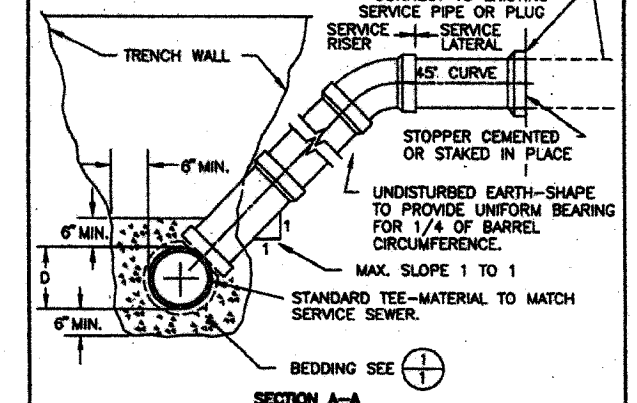
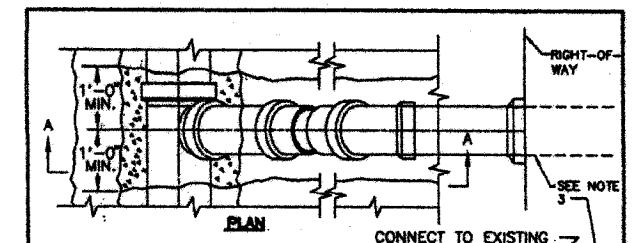


TYPICAL SECTION OF PIPE CROSSING UNDER PERMANENT SURFACE

NOTE:
THESE SECTIONS APPLY WHEREVER PIPE IS ADJACENT TO, OR CROSSES UNDER A ROADWAY, PARKING LOT, SIDEWALK, DRIVEWAY, STRUCTURE OR PAVEMENT.

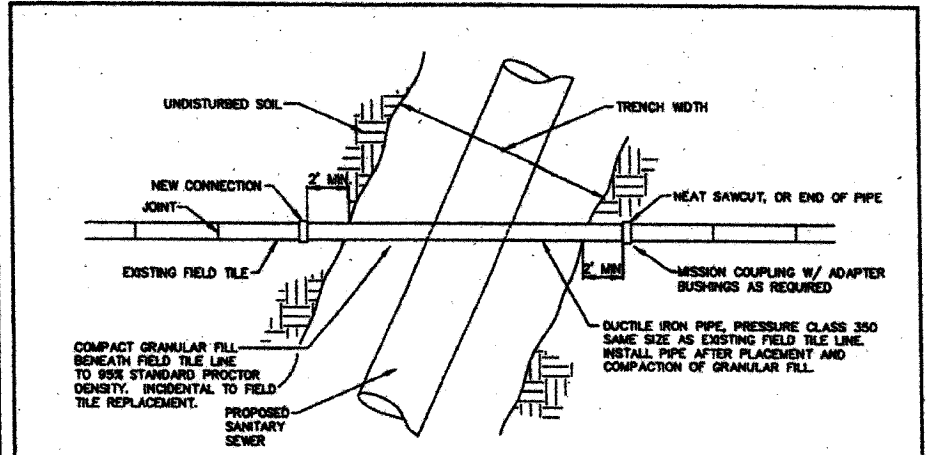


TYPICAL SECTION OF PIPE PARALLEL TO PERMANENT SURFACE
NO SCALE ⑤/①



- NOTES:**
- MAXIMUM SLOPE SHALL BE LESS THAN 1 TO 1 WHEN IT IS NECESSARY TO SECURE BEDDING IN UNDISTURBED EARTH.
 - SERVICE RISERS SHALL BE CONSTRUCTED OF SAME MATERIALS AS MAINLINE SEWER, 4" MIN. DIA.
 - CONFORM TO LOCAL REQUIREMENTS FOR PIPE MATERIALS AND INSTALLATION OUTSIDE OF PUBLIC RIGHT-OF-WAY. PROVIDE SUITABLE ADAPTER COUPLING (FERNCO OR EQUAL) TO JOIN DISSIMILAR PIPE MATERIALS OR SIZES.

SERVICE RISER
NO SCALE ③/①



REPLACEMENT OF FIELD TILE LINES
NO SCALE ⑥/①

REV.	DATE	REMARKS

DESIGNED: OLS
DRAWN: EMK
CHECKED: MLP
DATE: 7/14/97

BELING CONSULTANTS

Professional Engineering
Since 1886
Moline, St. Columbus, Oh, Davenport, Ia,
Chicago, Il, Joliet, Il, Peoria, Il, St. Louis, Mo.

□ PRELIMINARY
■ FINAL
□ RECORD

STANDARD DETAILS
DEKALB SANITARY DISTRICT
DEKALB ILLINOIS

SECTION 04-00001-00-PV