

**INDEX OF SHEETS**

- SHEET 1. COVER SHEET
- SHEET 2. TYPICAL CROSS SECTION, STRUCTURAL DESIGN, BUTT JOINT DETAIL, BITUMINOUS MIXTURE TABLE
- SHEET 3. TYPICAL ENTRANCE DETAIL, MAILBOX DETAILS, SIDE ROAD RETURN, VAR. DEPTH MILL DETAIL, GENERAL NOTES

**STANDARDS**

- 701301-02 LANE CLOSURE 2 LANE, 2 WAY, SHORT TIME OPERATIONS
- 701306-01 LANE CLOSURE 2 LANE, 2 WAY, SLOW MOVING OPERATIONS - DAY ONLY FOR SPEEDS ≥ 45 MPH
- 701311-02 LANE CLOSURE 2 LANE, 2 WAY, MOVING OPERATIONS - DAY ONLY
- 702001-05 TRAFFIC CONTROL DEVICES
- 780001-01 TYPICAL PAVEMENT MARKINGS

STATE OF ILLINOIS  
DEPARTMENT OF TRANSPORTATION

**PLANS FOR  
PROPOSED LOCAL AGENCY IMPROVEMENT  
FEDERAL-AID SECONDARY PROJECT**

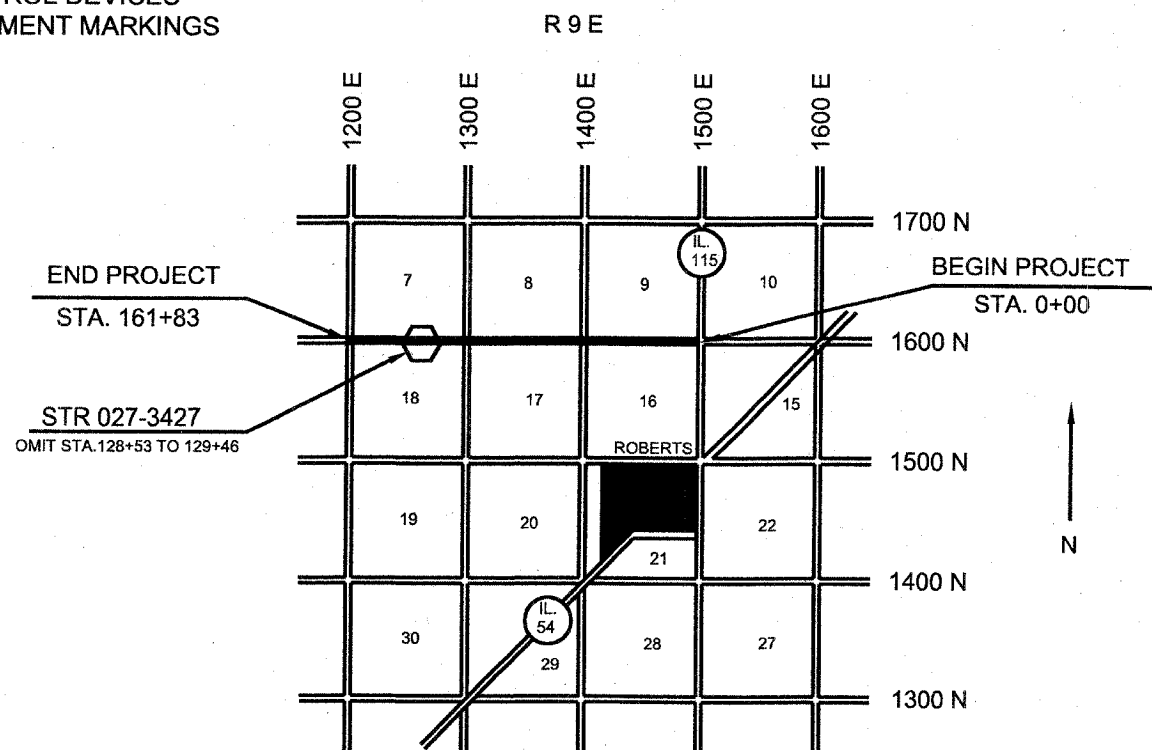
C.H.13

F.A.S. ROUTE 473 SECTION 03-00101-00-RS FORD COUNTY  
PROJECT RS-473 (107)  
JOB NO. C-93-076-04

FAS NO.	SECTION	COUNTY	TOTAL SHEETS	SHEET NO.
473	03 - 00101 - 00 - RS	RS	3	1
PROJECT RS - 473 (107)				
CONTRACT # 87268				

SUMMARY OF QUANTITIES

CODE NO.	ITEM	UNIT	1000 QUANTITY
* 40600100	BITUMINOUS MATERIALS (PRIME COAT)	GALLON	2990
* 40600300	AGGREGATE (PRIME COAT)	TON	40
* 40600980	BITUMINOUS SURFACE REMOVAL - BUTT JOINT	SQ YD	255
* 40600990	TEMPORARY RAMP	SQ YD	65
* 40800040	INCIDENTAL BITUMINOUS SURFACING	TON	40
* 48101200	AGGREGATE SHOULDERS, TYPE B	TON	1200
70100460	TRAFFIC CONTROL AND PROTECTION, STANDARD 701306	L SUM	1
* 70300100	SHORT- TERM PAVEMENT MARKING	FOOT	3220
* 78001110	PAINT PAVEMENT MARKING - LINE 4"	FOOT	8120
* X4066414	BITUMINOUS CONCRETE SURFACE COURSE, SUPERPAVE, MIXTURE C, N50	TON	3325
* X4066765	LEVELING BINDER (MACHINE METHOD), SUPERPAVE N50	TON	2770
*	INDICATES SEE SPECIAL PROVISIONS		



GROSS LENGTH = 16,183' = 3.06 MI.  
NET LENGTH = 16,090' = 3.05 MI.

THE PLANS FOR THIS SECTION WERE APPROVED  
BY THE DEPARTMENT AS SECTION 76-00045-00-RS,  
SECTION 84-00045-01-RS & SECTION 03-00101-00-RS  
MAJOR COLLECTOR

**UTILITIES**

UTILITIES ON THIS SECTION AT VARIOUS LOCATIONS INCLUDES TO THE BEST OF OUR KNOWLEDGE:

VERIZON TELEPHONE COMPANY (UNDERGROUND)  
EASTERN ILLINI ELECTRIC (OVERHEAD POWER)

CONTRACTORS OR SUBCONTRACTORS SHALL CONTACT J.U.L.I.E. (1-800-892-0123) AT LEAST 72 HOURS PRIOR TO ANY EXCAVATION OR DRIVING FOR UTILITIES LOCATION

JOB NO. C-93-076-04  
CONTRACT NO. 87268

*[Signature]*  
ILLINOIS PROFESSIONAL NO. 062-035801

EXPIRES 11-30-2005



CONSTRUCTION TYPE CODE IOOO  
CURRENT (2005) ADT = 125 - 88% PC  
9% SU  
3% MU  
DESIGN ADT (2015) = 200  
DESIGN SPEED = 50 MPH

THE ACCEPTANCE OF THIS PROJECT IS BASED ON THE MINIMUM DESIGN STANDARDS FOR THE LOCAL AGENCY PAVEMENT PRESERVATION (L.A.P.P.) POLICY

APPROVED	3/21/2005	<i>[Signature]</i> LOCAL AGENCY OFFICIAL
PASSED	3/23/05	<i>[Signature]</i> DISTRICT ENGINEER OF LOCAL ROADS & STREETS
APPROVED	3/23/05	<i>[Signature]</i> REGION 2 ENGINEER
STATE OF ILLINOIS DEPARTMENT OF TRANSPORTATION		