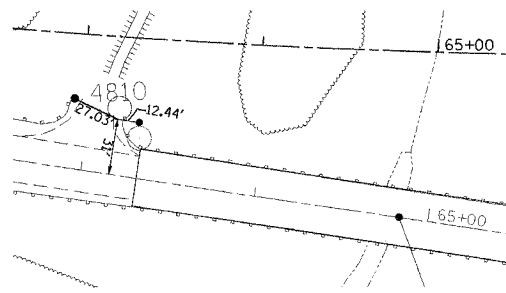


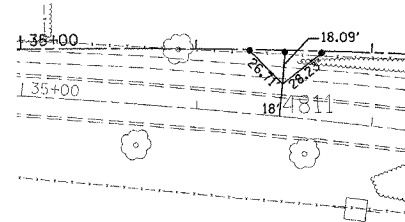
F.A.P. RTE.	SECTION	COUNTY	TOTAL SHEETS	SHEET NO.
317	...	FULTON	684	48
STA.		TO STA.		
FED. ROAD DIST. NO.		ILLINOIS FED. AID PROJECT		
... 181,(18BRY&18BRY-1)BR,18B-1				

4810



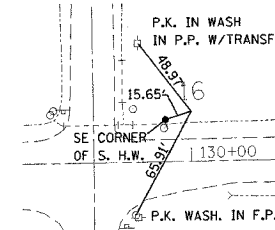
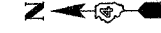
N 1,339,364.15 E 2,290,896.92
COORDINATES IN GROUND
(FACTOR = 0.999922)

4811



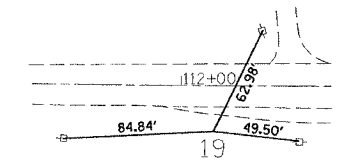
N 1,341,582.63 E 2,292,382.52
COORDINATES IN GROUND
(FACTOR = 0.999922)

16



N 1,332,823.32 E 2,290,121.69
COORDINATES IN GROUND
(FACTOR = 0.999922)

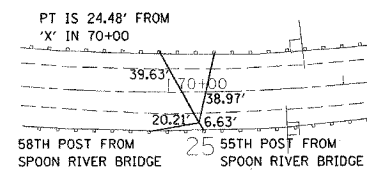
19



N 1,334,605.75 E 2,290,084.58
COORDINATES IN GROUND
(FACTOR = 0.999922)

*ALL TIES ARE P.K.
AND WASH ON P.P.

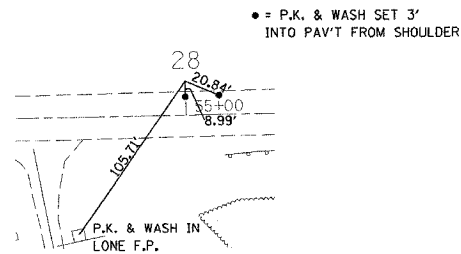
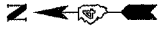
25



N 1,338,790.28 E 2,290,492.99
COORDINATES IN GROUND
(FACTOR = 0.999922)

*ALL TIES ARE CHIS 'X'
ON FACE OF POST

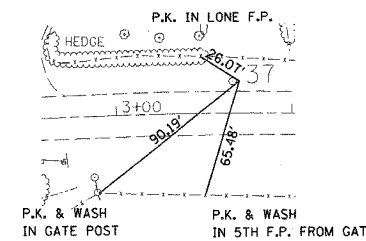
28



N 1,340,046.81 E 2,291,345.63
COORDINATES IN GROUND
(FACTOR = 0.999922)

* = P.K. & WASH SET 3'
INTO PAV'T FROM SHOULDER

37



N 1,334,614.39 E 2,293,632.49
COORDINATES IN GROUND
(FACTOR = 0.999922)

P.K. & WASH IN GATE POST
P.K. & WASH IN 5TH F.P. FROM GATE

REVISIONS	
NAME	DATE

ILLINOIS DEPARTMENT OF TRANSPORTATION

GPS CONTROL POINTS
US 24

SCALE: VERT.
HORIZ.
DATE

DRAWN BY
CHECKED BY