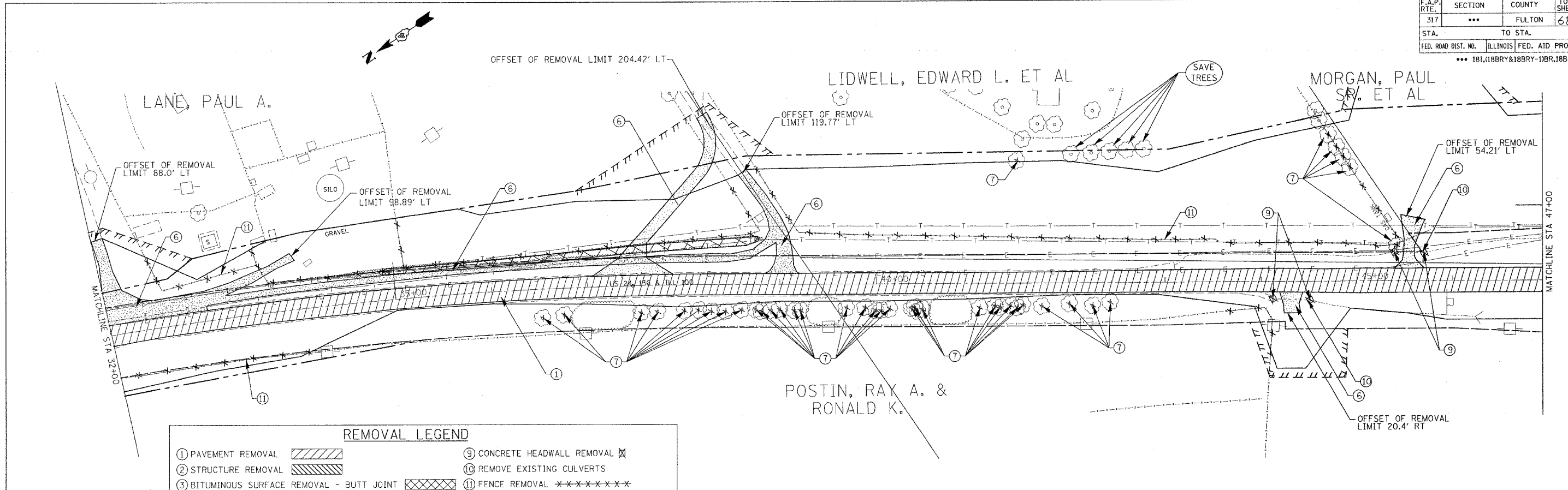
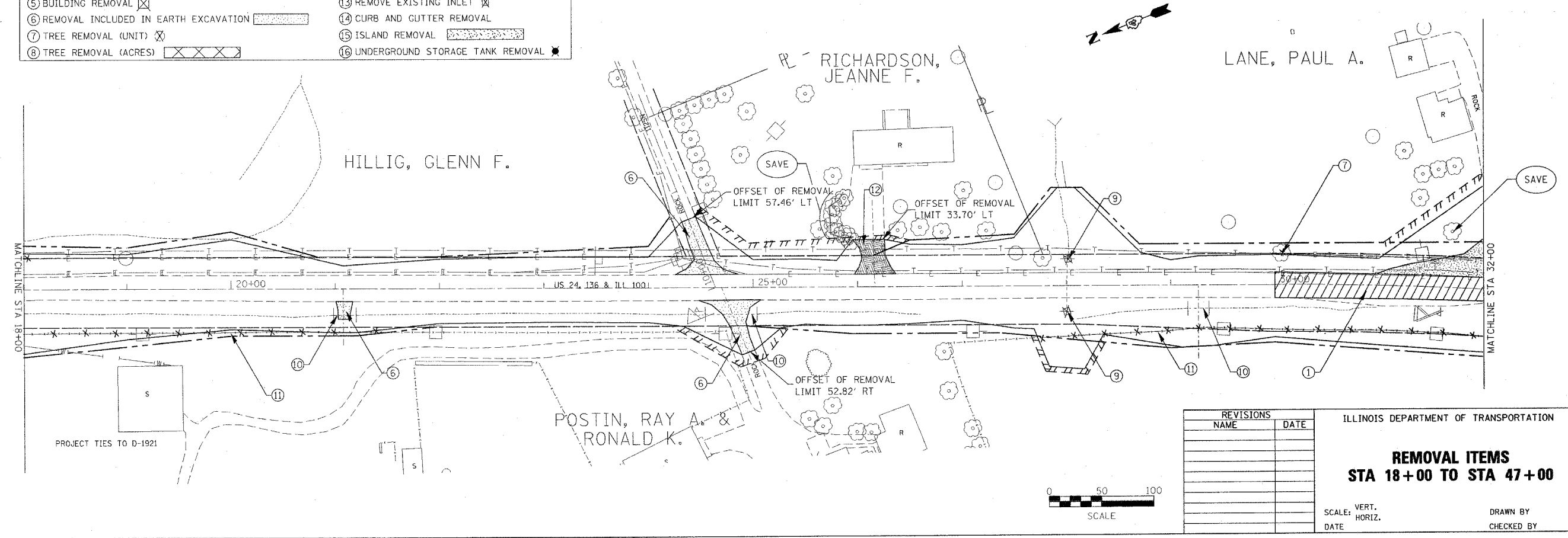


F.A.P. RTE.	SECTION	COUNTY	TOTAL SHEETS	SHEET NO.
317	...	FULTON	684	52
STA.	TO STA.			
FED. ROAD DIST. NO.	ILLINOIS	FED. AID PROJECT		
	... 181,188R&188R-11BR,188-1			



REMOVAL LEGEND

① PAVEMENT REMOVAL		⑨ CONCRETE HEADWALL REMOVAL	
② STRUCTURE REMOVAL		⑩ REMOVE EXISTING CULVERTS	
③ BITUMINOUS SURFACE REMOVAL - BUTT JOINT		⑪ FENCE REMOVAL	
④ GUARDRAIL REMOVAL		⑫ DRIVEWAY PAVEMENT REMOVAL	
⑤ BUILDING REMOVAL		⑬ REMOVE EXISTING INLET	
⑥ REMOVAL INCLUDED IN EARTH EXCAVATION		⑭ CURB AND GUTTER REMOVAL	
⑦ TREE REMOVAL (UNIT)		⑮ ISLAND REMOVAL	
⑧ TREE REMOVAL (ACRES)		⑯ UNDERGROUND STORAGE TANK REMOVAL	



REVISIONS

NAME	DATE

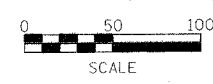
ILLINOIS DEPARTMENT OF TRANSPORTATION

REMOVAL ITEMS
STA 18+00 TO STA 47+00

SCALE: VERT. _____
HORIZ. _____

DATE _____

DRAWN BY _____
CHECKED BY _____



PLOT DATE = 4/7/2005
FILE NAME = c:\proj\181\188r\188r-11br\188-1\removal.dgn
PLOT SCALE = 5/8"=1'-0"
USER NAME = huggins