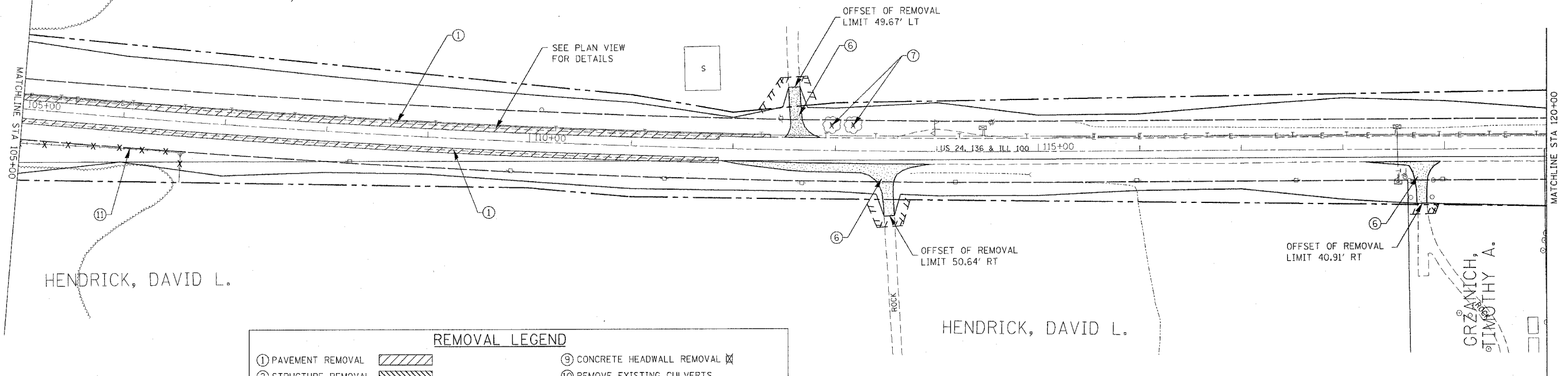
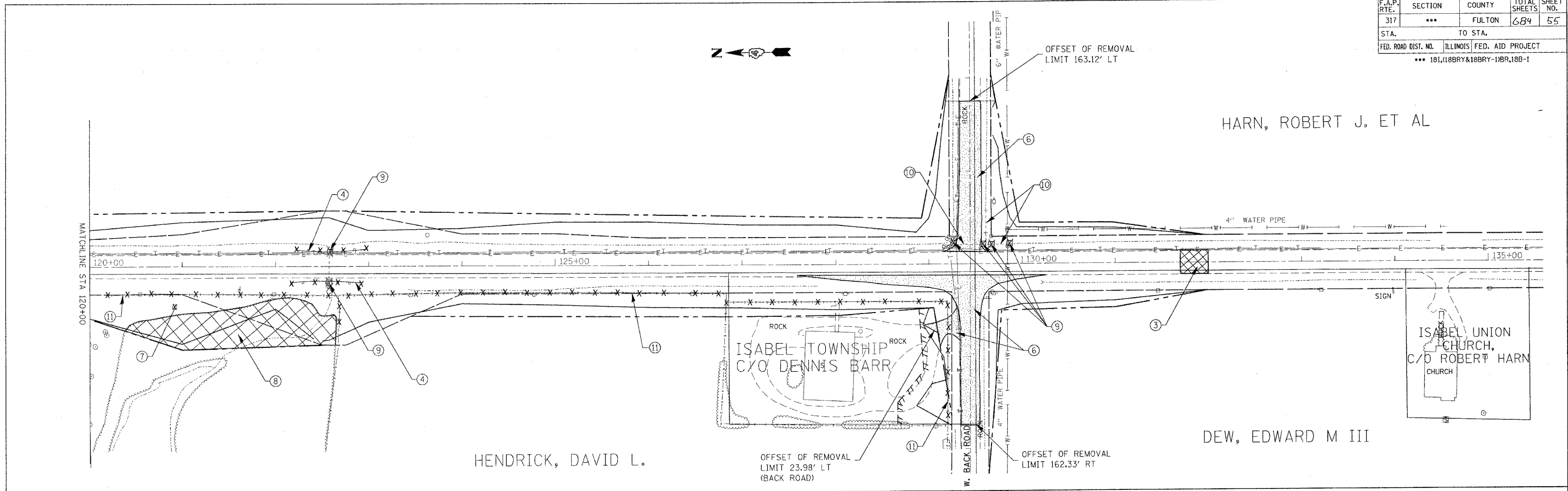


F.A.P. RTE.	SECTION	COUNTY	TOTAL SHEETS	SHEET NO.
317	***	FULTON	684	55
STA.		TO STA.		
FED. ROAD DIST. NO.		ILLINOIS FED. AID PROJECT		
		*** 181,18BRY&18BRY-1BR,18B-1		

HARN, ROBERT J. ET AL

DEW, EDWARD M III

HENDRICK, DAVID L.



HENDRICK, DAVID L.

HENDRICK, DAVID L.

GRZANICH, TIMOTHY A.

REMOVAL LEGEND

① PAVEMENT REMOVAL	⑨ CONCRETE HEADWALL REMOVAL
② STRUCTURE REMOVAL	⑩ REMOVE EXISTING CULVERTS
③ BITUMINOUS SURFACE REMOVAL - BUTT JOINT	⑪ FENCE REMOVAL
④ GUARDRAIL REMOVAL	⑫ DRIVEWAY PAVEMENT REMOVAL
⑤ BUILDING REMOVAL	⑬ REMOVE EXISTING INLET
⑥ REMOVAL INCLUDED IN EARTH EXCAVATION	⑭ CURB AND GUTTER REMOVAL
⑦ TREE REMOVAL (UNIT)	⑮ ISLAND REMOVAL
⑧ TREE REMOVAL (ACRES)	⑯ UNDERGROUND STORAGE TANK REMOVAL

REVISIONS

NAME	DATE

ILLINOIS DEPARTMENT OF TRANSPORTATION

REMOVAL ITEMS
STA 105+00 TO STA 135+00

SCALE: VERT. _____
HORIZ. _____

DATE _____ DRAWN BY _____
CHECKED BY _____

PLOT DATE = 4/7/2005
 FILE NAME = c:\p\projects\va2\hpoon\ph-2\harn_r_removal.dgn
 PLOT SCALE = 50.0000 / IN.
 USER NAME = hreganmd