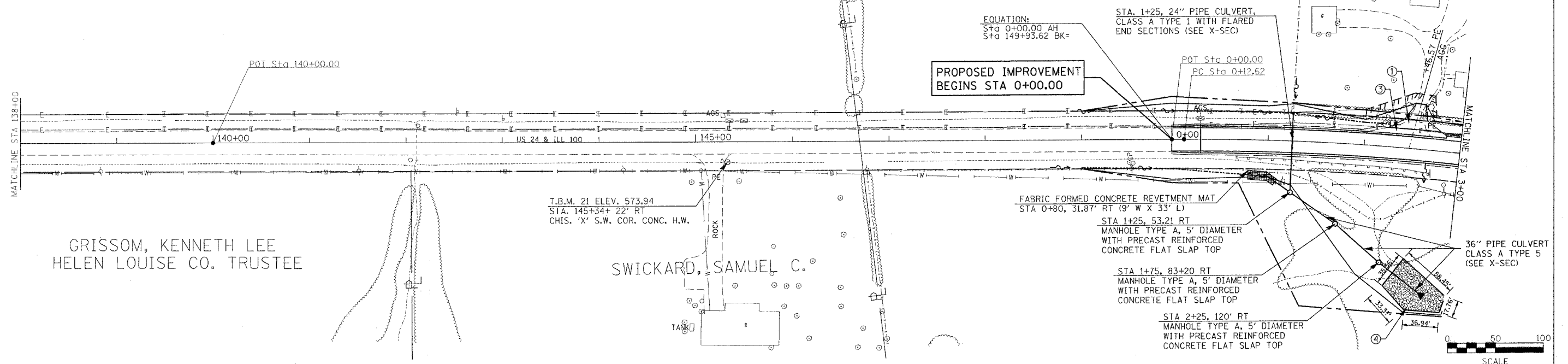


F.A.P. RTE.	SECTION	COUNTY	TOTAL SHEETS	SHEET NO.
317	***	FULTON	684	57
STA.		TO STA.		
FED. ROAD DIST. NO.		ILLINOIS FED. AID PROJECT		
*** 181,(18BRY&18BRY-1)BR,18B-1				

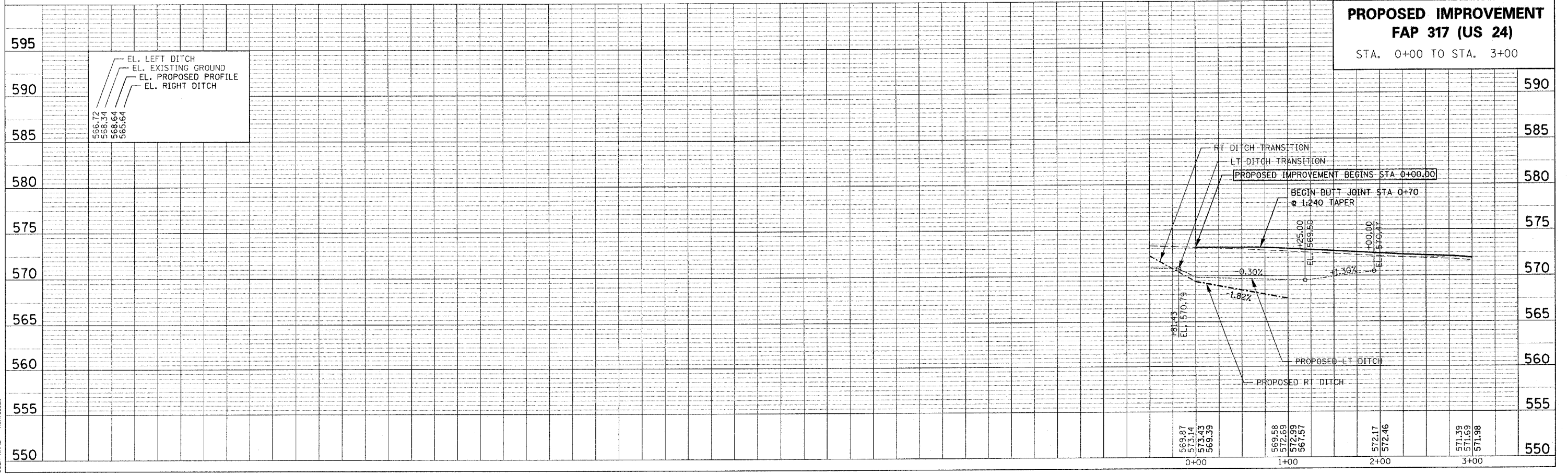
GRISSOM, KENNETH LEE
HELEN LOUISE CO. TRUSTEE

- LEGEND**
- ① AGG SURFACE COURSE TYPE A 6"
 - ② AGG SURFACE COURSE TYPE A 8"
 - ③ BIT SHOULDER 6 1/2" W/ BIT SURFACE CSE 1 1/2"
 - ④ CLASS B-3 RIPRAP
 - ⑤ CLASS A-2 RIPRAP
 - ⑥ CLASS A-3 RIPRAP
 - ⑦ CLASS A-4 RIPRAP
 - ⑧ CONCRETE COLLAR



PLAN	DATE
BY	
REVISIONS	
NO.	DESCRIPTION

PROFILE	DATE
BY	
REVISIONS	
NO.	DESCRIPTION



PROPOSED IMPROVEMENT
FAP 317 (US 24)
STA. 0+00 TO STA. 3+00

PLOT DATE = 4/27/2008
FILE NAME = c:\pwork\181\us24\appan.ph-2\shweta.spr\p317.dgn
PLOT SCALE = 50:1
USER NAME = kuhfuss