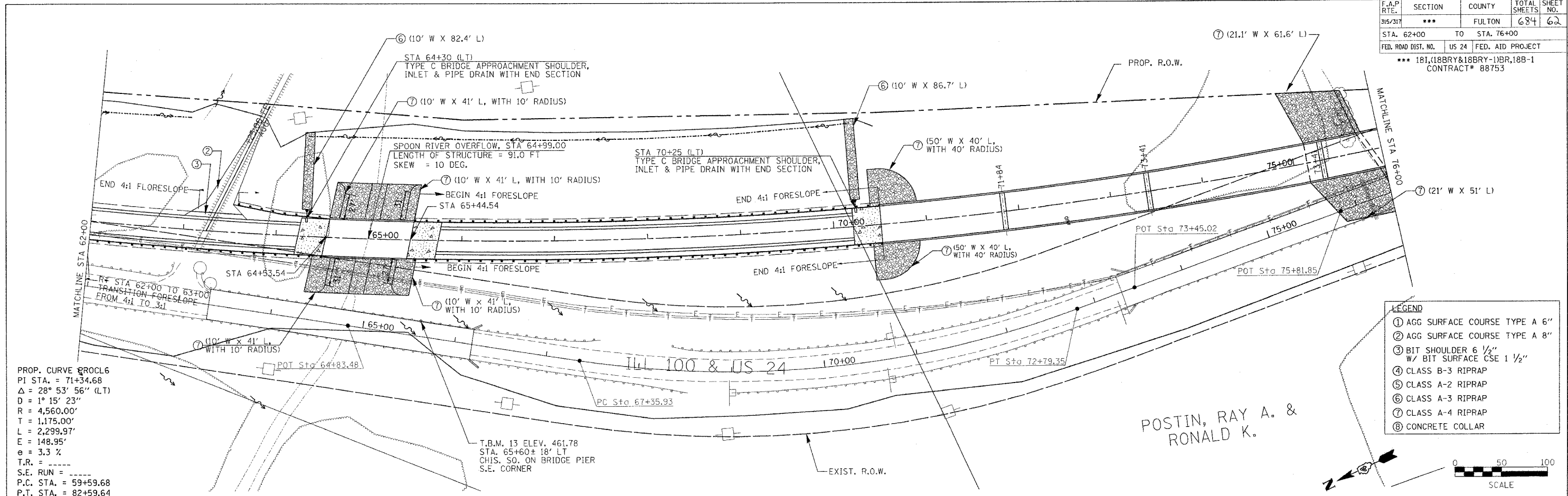


F.A.P. RTE.	SECTION	COUNTY	TOTAL SHEETS	SHEET NO.
315/317	***	FULTON	684	62
STA. 62+00	TO STA. 76+00			
FED. ROAD DIST. NO.	US 24	FED. AID PROJECT		
*** 181,188BRY&188BRY-1)BR,188-1 CONTRACT# 88753				

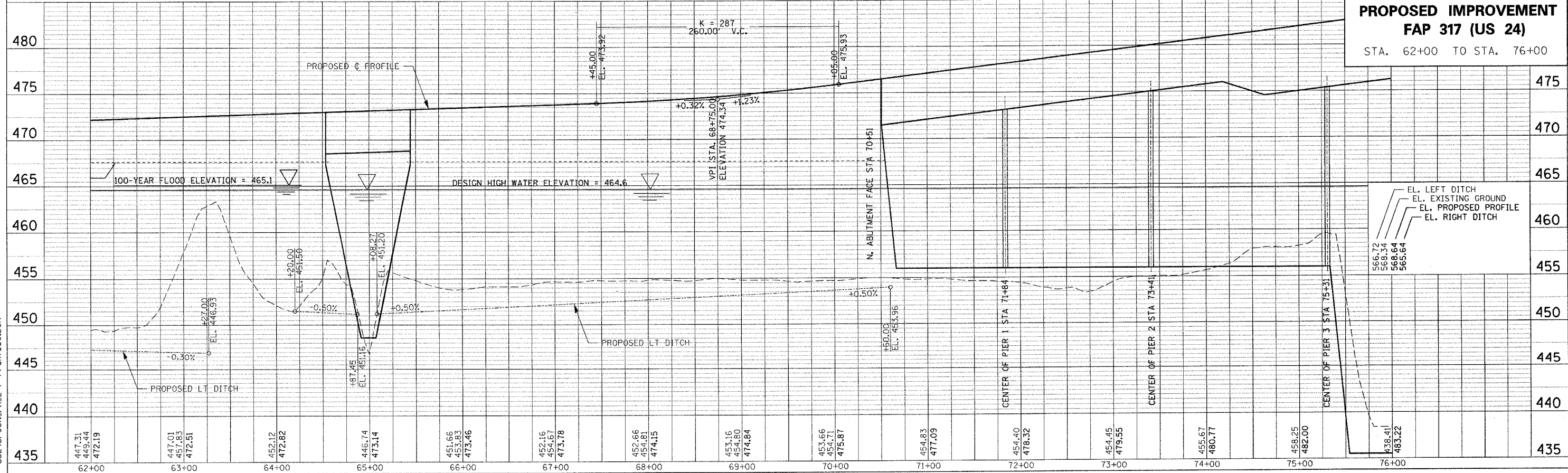
PLAN	DATE
BY	
NO.	
NO.	
NO.	
NO.	



PROP. CURVE PROCL6  
 PI STA. = 71+34.68  
 $\Delta = 28^\circ 53' 56''$  (LT)  
 $D = 1^\circ 15' 23''$   
 $R = 4,560.00'$   
 $T = 1,175.00'$   
 $L = 2,299.97'$   
 $E = 148.95'$   
 $e = 3.3\%$   
 T.R. = -----  
 S.E. RUN = -----  
 P.C. STA. = 59+59.68  
 P.T. STA. = 82+59.64

LEGEND	
①	AGG SURFACE COURSE TYPE A 6"
②	AGG SURFACE COURSE TYPE A 8"
③	BIT SHOULDER 6 1/2" W/ BIT SURFACE CSE 1 1/2"
④	CLASS B-3 RIPRAP
⑤	CLASS A-2 RIPRAP
⑥	CLASS A-3 RIPRAP
⑦	CLASS A-4 RIPRAP
⑧	CONCRETE COLLAR

PROFILE	DATE
BY	
NO.	
NO.	
NO.	



**PROPOSED IMPROVEMENT**  
**FAP 317 (US 24)**  
 STA. 62+00 TO STA. 76+00

EL. LEFT DITCH	566.72
EL. EXISTING GROUND	568.34
EL. PROPOSED PROFILE	568.64
EL. RIGHT DITCH	565.64

US24SPOON.PH.2 / PPSHTSSO.DGN  
 PLOTTED: \*\*DATE\*\*