

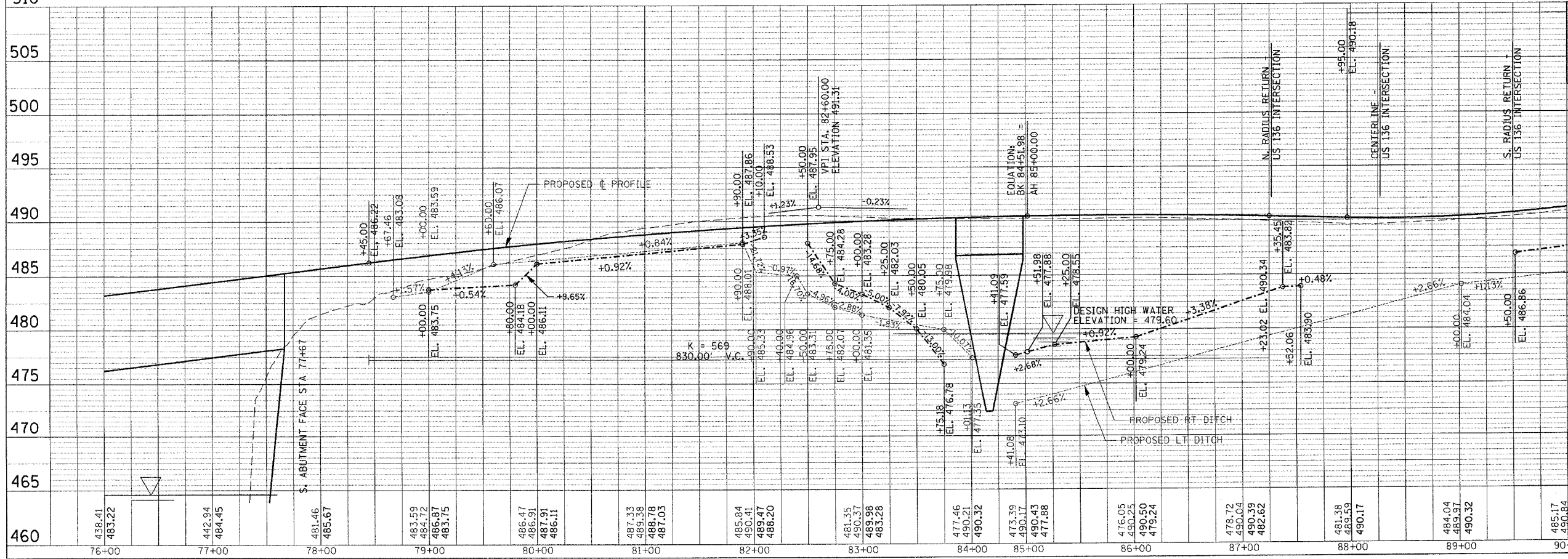
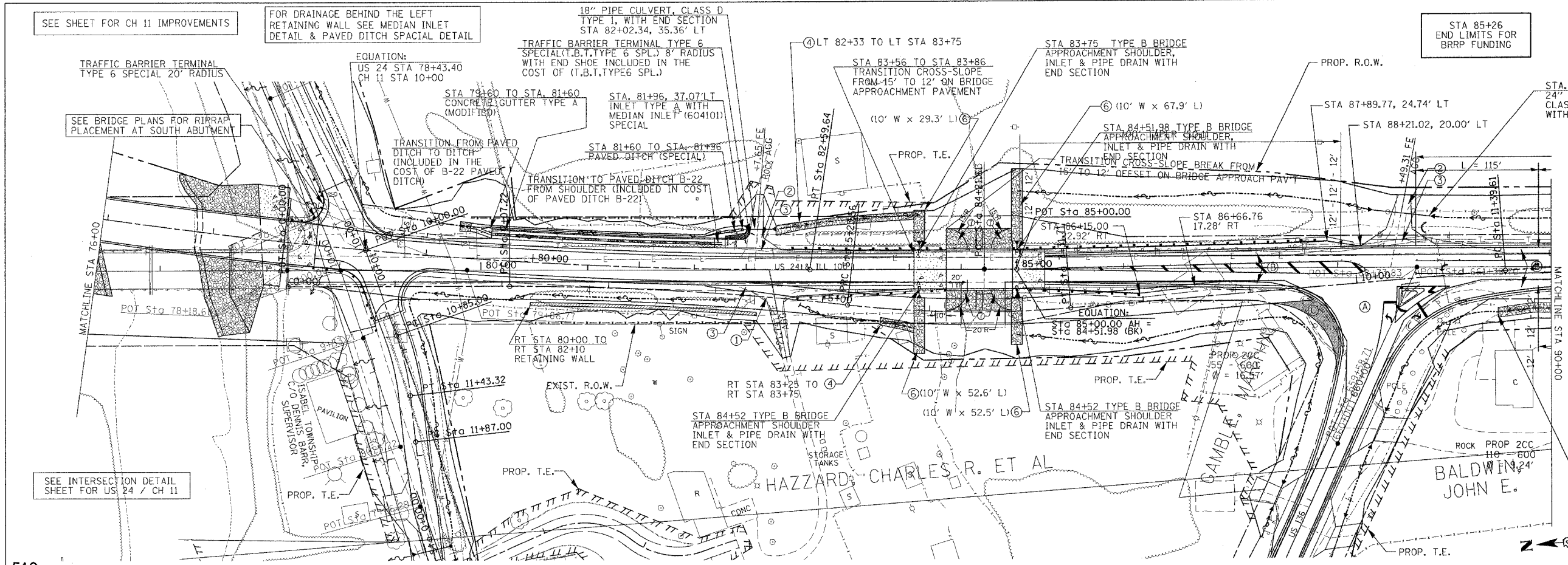
F.A.P. RTE.	SECTION	COUNTY	TOTAL SHEET NO.
315/317	***	FULTON	684 63
STA. 76+00 TO STA. 90+00		FED. AID PROJECT	
FED. ROAD DIST. NO. US 24		CONTRACT# 88753	

STA 85+26  
END LIMITS FOR  
BRRP FUNDING

BLEND SOIL:  
LT & RT STA. 6+00 TO 11+00  
ELEVATION 563.30 TO 551.80  
(SEE SPECIAL PROVISIONS-  
EMBANKMENT (BLEND SOIL))

- LEGEND
- ① AGG SURFACE COURSE TYPE A 6"
  - ② AGG SURFACE COURSE TYPE A 8"
  - ③ BIT SHOULDER 6 1/2" W/ BIT SURFACE CSE 1 1/2"
  - ④ CLASS B-3 RIPRAP
  - ⑤ CLASS A-2 RIPRAP
  - ⑥ CLASS A-3 RIPRAP
  - ⑦ CLASS A-4 RIPRAP
  - ⑧ CONCRETE COLLAR

- Ⓐ SEE INTERSECTION DETAIL SHEET FOR US 24 / US 136
- Ⓑ SEE BASE COURSE WIDENING SHEET FOR SAWCUT DETAIL
- Ⓒ BIT. CONC. BASE CSE WIDENING 10"



**PROPOSED IMPROVEMENT**  
**FAP 315/317 (US 24)**  
STA. 76+00 TO STA. 90+00

- EL. LEFT DITCH
- EL. EXISTING GROUND
- EL. PROPOSED PROFILE
- EL. RIGHT DITCH

PLAN	DATE
DATE	BY
REVISIONS	NO.
DESCRIPTION	DATE
BY	NO.

PROFILE	DATE
DATE	BY
REVISIONS	NO.
DESCRIPTION	DATE
BY	NO.

US24SP00N\_PH.2 / PPSHTSS0.DGN

PLOTTED: \*\*DATE\*\*