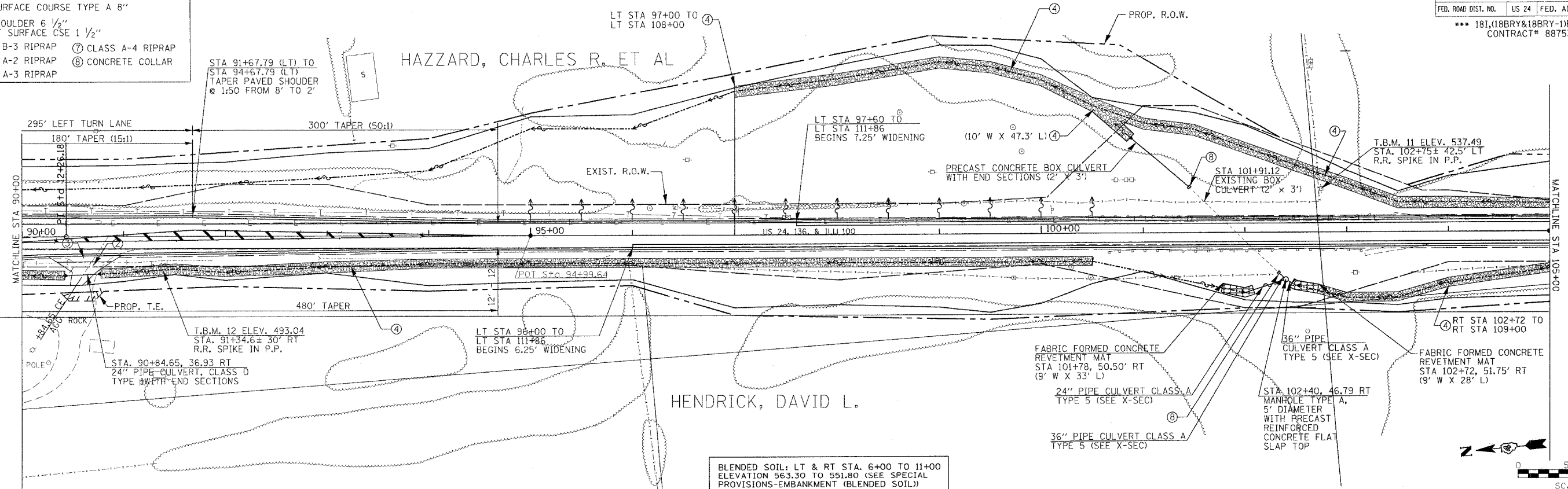


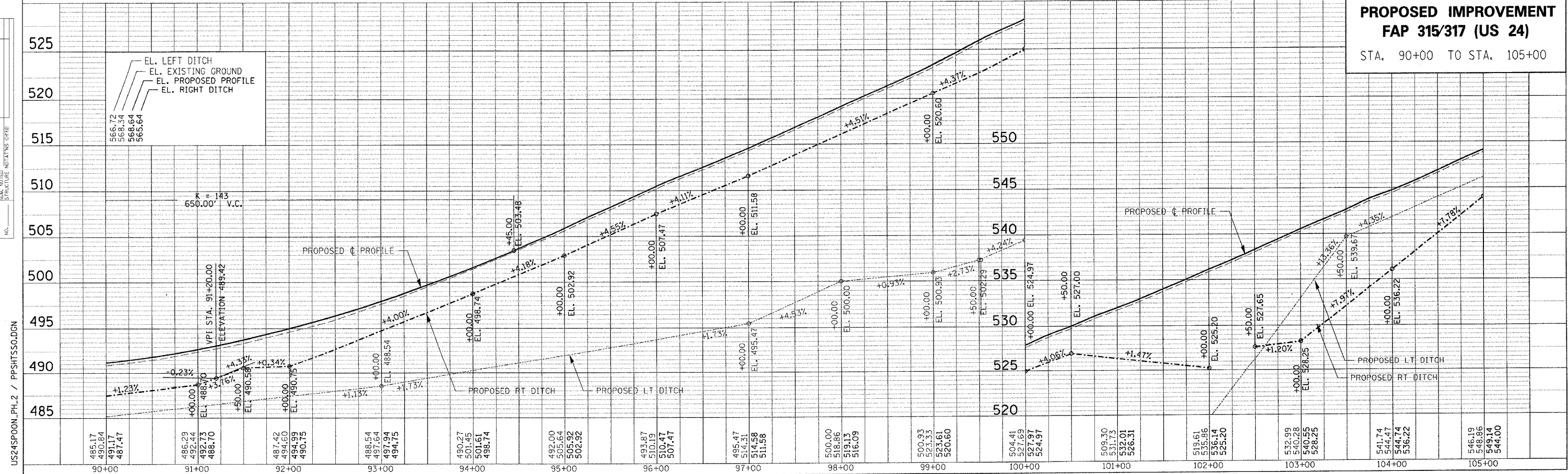
F.A.P. RTE.	SECTION	COUNTY	TOTAL SHEETS	SHEET NO.
315/317	***	FULTON	684	64
STA. 90+00 TO STA. 105+00		FED. AID PROJECT		
FED. ROAD DIST. NO. US 24		CONTRACT# 88753		

- LEGEND**
- ① AGG SURFACE COURSE TYPE A 6"
 - ② AGG SURFACE COURSE TYPE A 8"
 - ③ BIT SHOULDER 6 1/2" W/ BIT SURFACE CSE 1 1/2"
 - ④ CLASS B-3 RIPRAP
 - ⑤ CLASS A-2 RIPRAP
 - ⑥ CLASS A-3 RIPRAP
 - ⑦ CLASS A-4 RIPRAP
 - ⑧ CONCRETE COLLAR



DATE	BY
DATE	BY
DATE	BY

DATE	BY
DATE	BY
DATE	BY



PROPOSED IMPROVEMENT
FAP 315/317 (US 24)
 STA. 90+00 TO STA. 105+00

US24SPOON_PH.2 / PPSHTSSO.DGN
 PLOTTED: **DATE**