

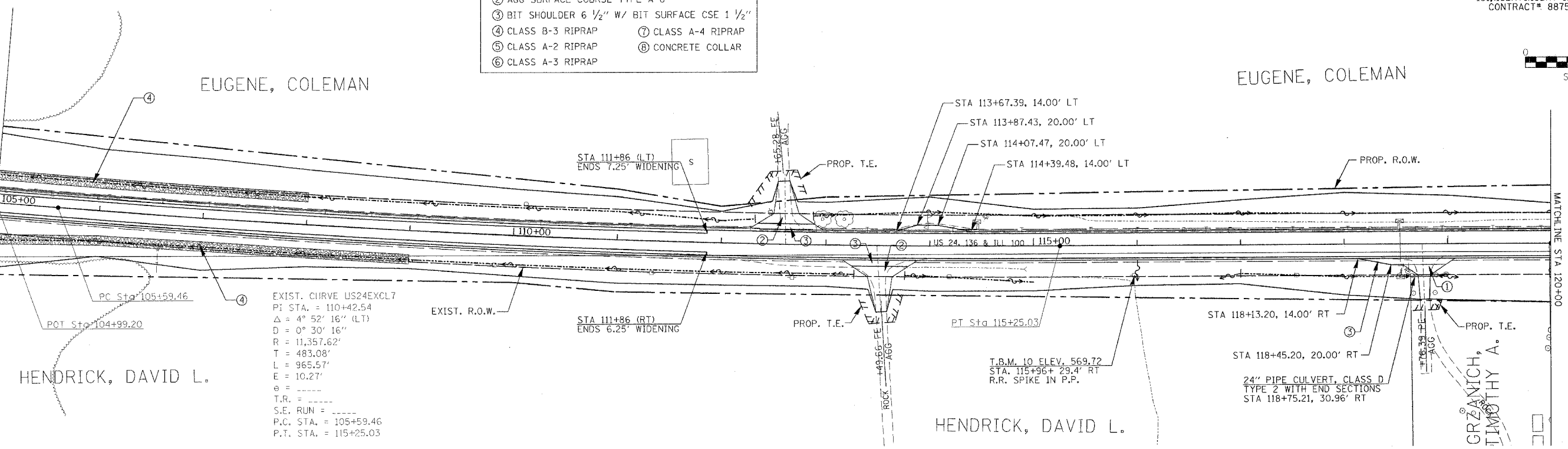
| | | | | |
|--|---------|------------------|--------------|-----------|
| F.A.P. RTE. | SECTION | COUNTY | TOTAL SHEETS | SHEET NO. |
| 315/317 | *** | FULTON | 684 | 65 |
| STA. 105+00 | TO | STA. 120+00 | | |
| FED. ROAD DIST. NO. | US 24 | FED. AID PROJECT | | |
| *** 181(18BRY&18BRY-1)BR,18B-1 CONTRACT# 88753 | | | | |



- LEGEND**
- ① AGG SURFACE COURSE TYPE A 6"
 - ② AGG SURFACE COURSE TYPE A 8"
 - ③ BIT SHOULDER 6 1/2" W/ BIT SURFACE CSE 1 1/2"
 - ④ CLASS B-3 RIPRAP
 - ⑤ CLASS A-2 RIPRAP
 - ⑥ CLASS A-3 RIPRAP
 - ⑦ CLASS A-4 RIPRAP
 - ⑧ CONCRETE COLLAR

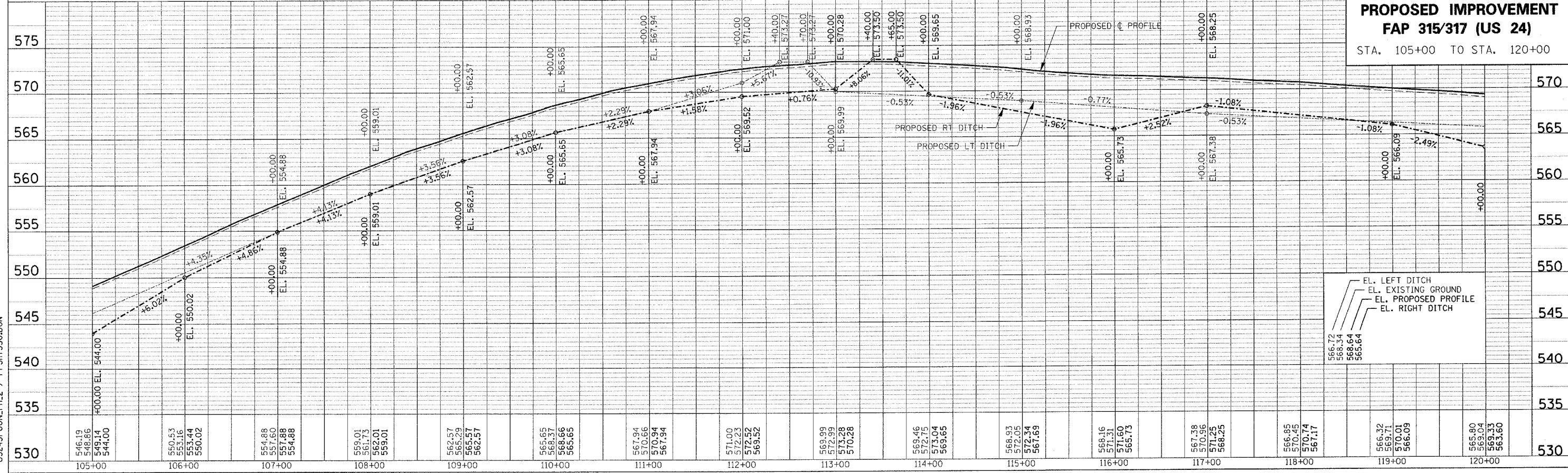
EUGENE, COLEMAN

EUGENE, COLEMAN



EXIST. CURVE US24EXCL7
 PI STA. = 110+42.54
 $\Delta = 4^\circ 52' 16''$ (LT)
 $D = 0^\circ 30' 16''$
 $R = 11,357.62'$
 $T = 483.08'$
 $L = 965.57'$
 $E = 10.27'$
 $\theta =$
 $T.R. =$
 $S.E. RUN =$
 $P.C. STA. = 105+59.46$
 $P.T. STA. = 115+25.03$

**PROPOSED IMPROVEMENT
 FAP 315/317 (US 24)
 STA. 105+00 TO STA. 120+00**



EL. LEFT DITCH
 EL. EXISTING GROUND
 EL. PROPOSED PROFILE
 EL. RIGHT DITCH

PLAN

| | |
|---------------|--|
| DATE | |
| BY | |
| DESIGNED BY | |
| CHECKED BY | |
| APPROVED BY | |
| NOTE BOOK NO. | |
| FILE NAME | |

PROFILE

| | |
|---------------|--|
| DATE | |
| BY | |
| DESIGNED BY | |
| CHECKED BY | |
| APPROVED BY | |
| NOTE BOOK NO. | |
| FILE NAME | |

US24SPOON_LPH.2 / PPSHTSS0.DGN

PLOTTED: **DATE**