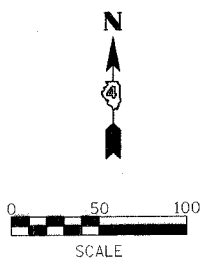


PROP. CURVE PR1045-1
 PI STA. = 18+35.51
 $\Delta = 19^\circ 35' 00''$ (RT)
 $D = 3^\circ 16' 27''$
 $R = 1,750.00'$
 $T = 302.02'$
 $L = 598.14'$
 $E = 25.87'$
 $e = 5.3\%$
 T.R. = -----
 S.E. RUN = -----
 P.C. STA. = 15+33.50
 P.T. STA. = 21+31.64

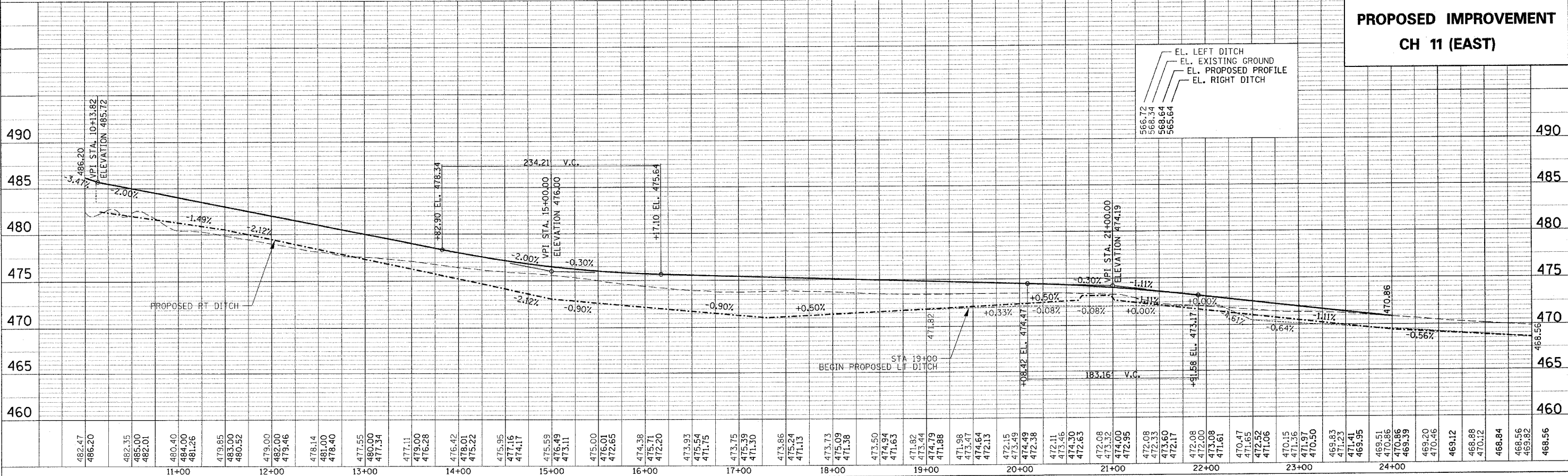
- LEGEND**
- ① AGG SURFACE COURSE TYPE A 6"
 - ② AGG SURFACE COURSE TYPE A 8"
 - ③ BIT SHOULDER 6 1/2" W/ BIT SURFACE CSE 1 1/2"
 - ④ CLASS B-3 RIPRAP
 - ⑤ CLASS A-2 RIPRAP
 - ⑥ CLASS A-3 RIPRAP
 - ⑦ CLASS A-4 RIPRAP
 - ⑧ CONCRETE COLLAR



PLAN	DATE
BY	
CHECKED	
NO.	

PROFILE	DATE
BY	
CHECKED	
NO.	

US24SPOON_PH.2 / PPSHTSSO.DGN



**PROPOSED IMPROVEMENT
CH 11 (EAST)**

PLOTTED: ##DATE##