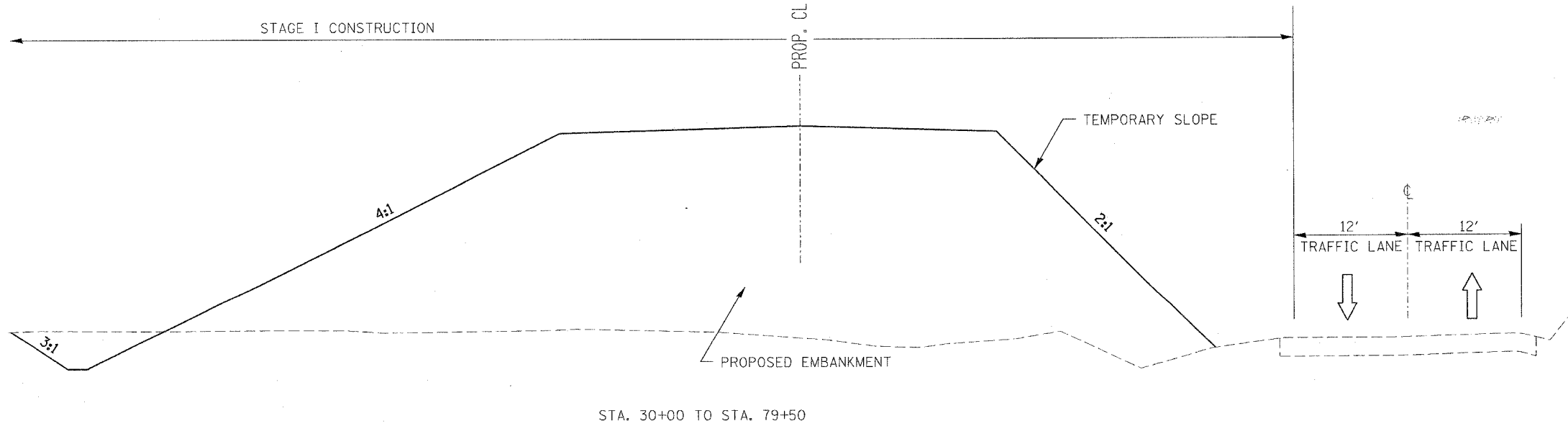
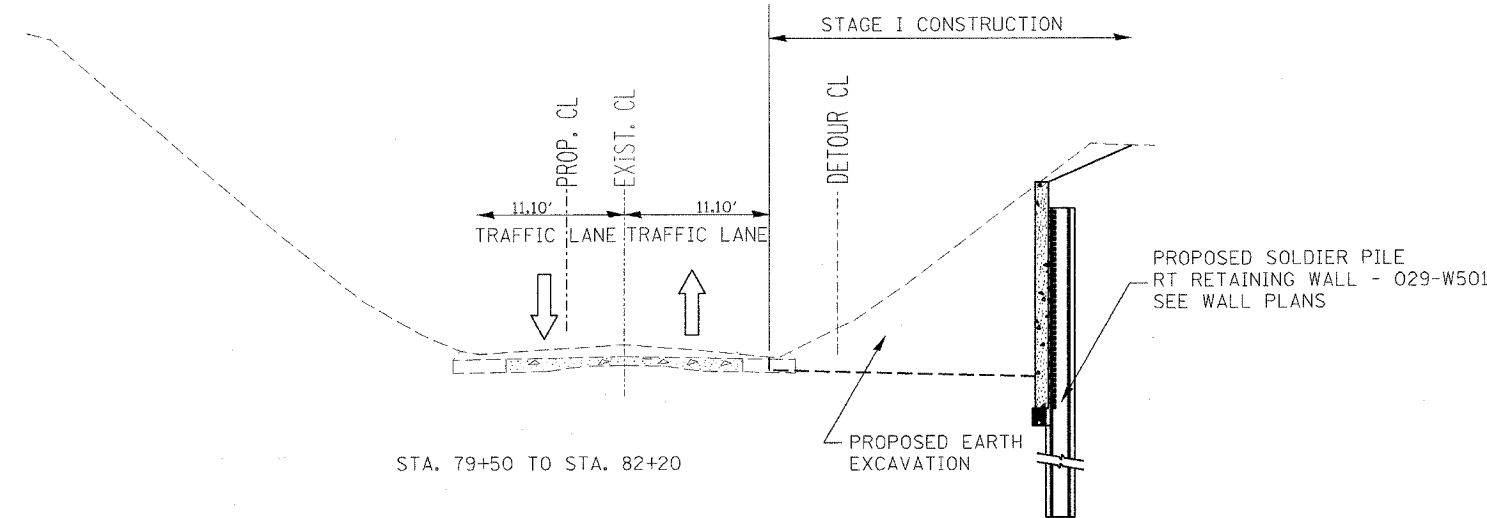
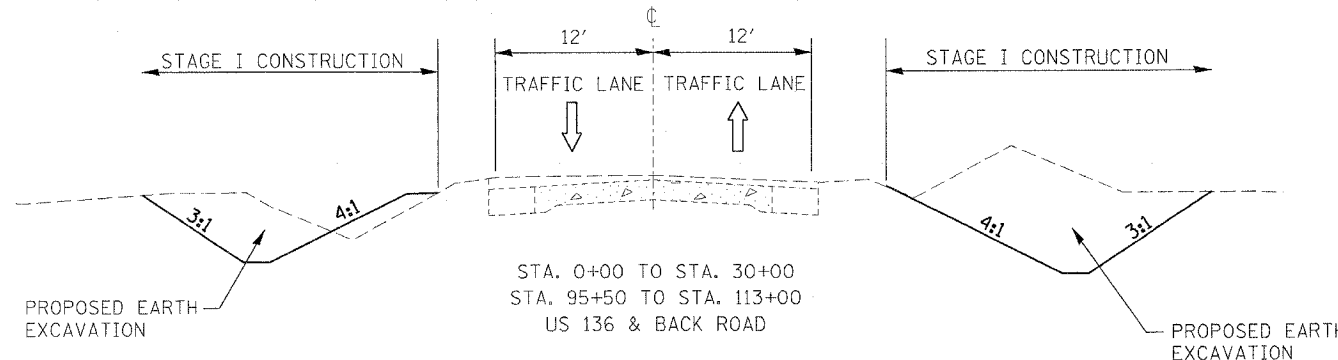


F.A.P. RTE.	SECTION	COUNTY	TOTAL SHEETS	SHEET NO.
317	...	FULTON	684	72
STA.		TO STA.		
FED. ROAD DIST. NO.		ILLINOIS FED. AID PROJECT		
...181,18BRY&18BRY-1)BR,18B-1				



STAGE I CONSTRUCTION

PERFORM EARTH EXCAVATION BETWEEN STA. 0+00 TO 30+00 AND STA. 78+00 TO 130+00.

PERFORM EARTHWORK ON BACK ROAD.

CONSTRUCT TEMPORARY ACCESS ROADS FOR LIDWELL AND HAZZARD PROPERTIES.

CONSTRUCT EMBANKMENT BETWEEN STA 38+50 TO 70+60 AND LIME MODIFY AT LOCATIONS SHOWN ON PLANS.

PLACE TEMPORARY CULVERTS.

INSTALL CROSSROAD CULVERT EXTENSIONS, ENTRANCE CULVERTS, AND DRAINAGE STRUCTURES ON US 24.

INSTALL TEMPORARY BRIDGE STA 6+29.39 TO 6+70.40 OVER SPOON RIVER TRIBUTARY.

REMOVE EXISTING RESIDENCE AT RT STA 87+50.

INSTALL TEMPORARY AND PERMANENT EROSION CONTROL MEASURES.

CONSTRUCT RT RETAINING WALL BETWEEN STA 80+00 TO 82+10.

BEGIN SPOON RIVER STRUCTURE AND OVERFLOW STRUCTURE.

STAGE I TRAFFIC CONTROL

USE STD 701001, 701006 , AND 701201 AS NEEDED. STD 701201 PAID FOR AS "TC&P STD 701201 - L SUM"

PATCHING FOR PLACEMENT OF TEMPORARY CULVERT COVERED BY STD 701201 AND PAID FOR AS "TC&P STD 701201 - L SUM"

EXCAVATION FOR TEMPORARY DETOUR RUNAROUND COVERED BY STD 701326. PAID FOR AS "TC&P STD 701326 - L SUM"

REVISIONS	
NAME	DATE

ILLINOIS DEPARTMENT OF TRANSPORTATION

**STAGE I CONSTRUCTION
TYPICAL SECTIONS**

SCALE: VERT.
HORIZ.
DATE

DRAWN BY
CHECKED BY

PLOT DATE = 4/7/2005
FILE NAME = C:\projects\va\24spoon\ch_2\staging\stage1\stagn
USER NAME = haggard