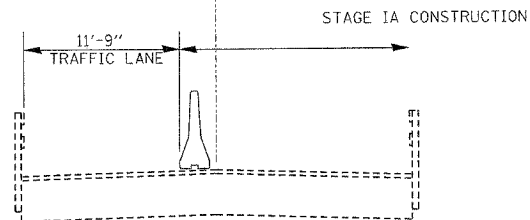


F.A.P. RTE.	SECTION	COUNTY	TOTAL SHEETS	SHEET NO.
317	***	FULTON	684	73
STA.		TO STA.		
FED. ROAD DIST. NO.		ILLINOIS FED. AID PROJECT		
***181,(18BRY&18BRY-1)BR,18B-1				

-----PROP. CL

-----EXIST. CL



STAGE IA CONSTRUCTION

STAGE IA & IB CONSTRUCTION

REPLACE BEAMS 7 & 8 IN SPAN 4 AND BEAM 11 IN SPAN 8

REPLACE BEAMS 1 & 6 IN SPAN 1, BEAM 1 IN SPAN 2, BEAM 5 IN SPAN 3, AND BEAM 6 IN SPAN 5

STAGE IA & IB TRAFFIC CONTROL

USE STD. 701321 PAID FOR AS "TC&P STD 701321 - EACH

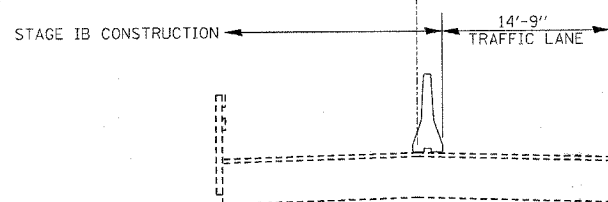
TEMPORARY TRAFFIC SIGNALS PAID FOR AS "TEMPORARY BRIDGE TRAFFIC SIGNALS - EACH" SEE STAGE IA & IB PLANS

BARRIER WALL PAID FOR AS "CONCRET BARRIER WALL (STATE OWNED) - FOOT"

CONTRACTOR SHALL INTALL TWO MICROWAVE SENSORS AND TWO ADDITIONAL SIGNAL HEADS ON WOOD POLES TO CONTROL TRAFFIC ON COUTNY HIGHWAY 11 EAST AND WEST SEE THE SPECIAL PROVISION FOR TEMPORARY BRIDGE TRAFFIC SIGNALS

-----PROP. CL

-----EXIST. CL



STAGE IB CONSTRUCTION

REVISIONS	
NAME	DATE

ILLINOIS DEPARTMENT OF TRANSPORTATION

**STAGE IA & IB CONSTRUCTION
TYPICAL SECTIONS**

SCALE: VERT. DATE

DRAWN BY CHECKED BY