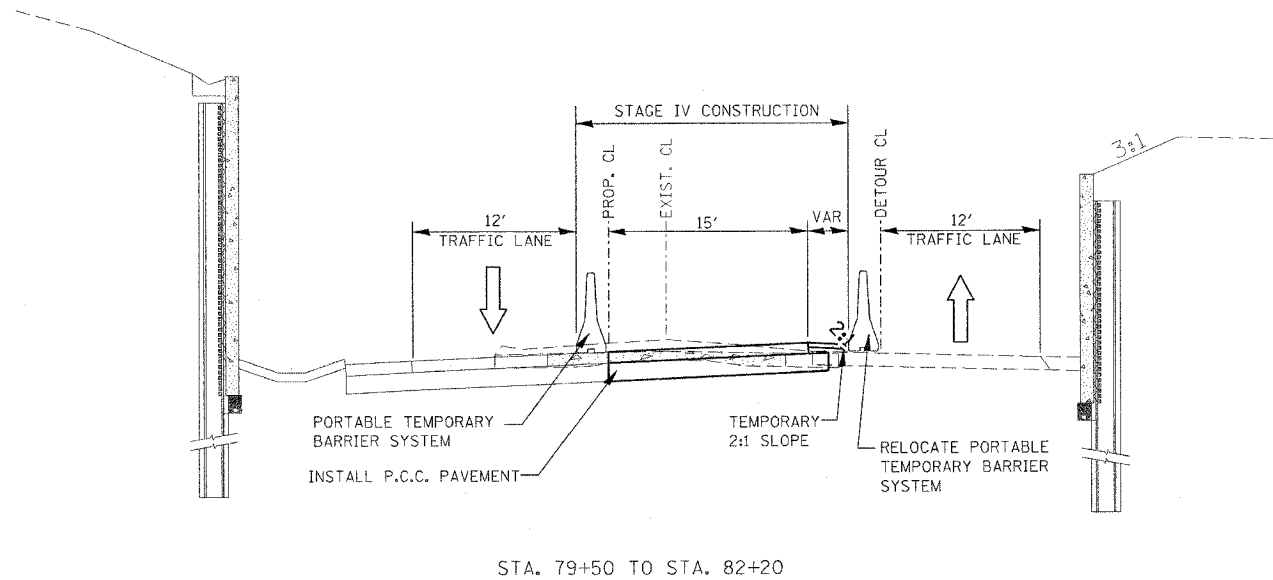


F.A.P. RTE.	SECTION	COUNTY	TOTAL SHEETS	SHEET NO.
317	***	FULTON	684	80
STA.		TO STA.		
FED. ROAD DIST. NO.		ILLINOIS FED. AID PROJECT		

\*\*\*181,118BRY&18BRY-11BR,18B-1



STA. 79+50 TO STA. 82+20

STAGE IV CONSTRUCTION

RECONFIGURE TRAFFIC CONTROL BETWEEN STA 30+00 TO 35+00. RELOCATE PORTABLE TEMPORARY BARRIER SYSTEM AT SPOON RIVER.

MODIFY SIGNAL PHASING FOR DUNCAN MILLS TRAFFIC.

SHIFT TRAFFIC TO PROPOSED NORTHBOUND AND EXISTING SOUTHBOUND LANES,

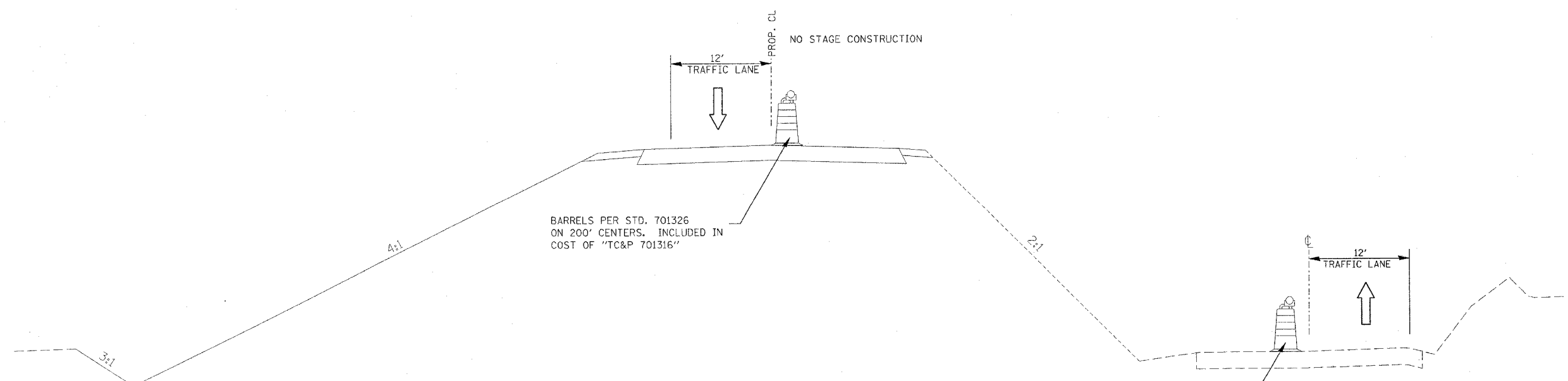
LEAVING THE PROPOSED SOUTHBOUND LANE FOR THE CONSTRUCTION AREA.

REMOVE AND REPLACE PAVEMENT IN SOUTHBOUND LANE (SEE SPECIAL PROVISION FOR COMPLETION DATE WITH LIQUIDATED DAMAGES FOR SOUTHBOUND LAND COMPLETION)

STAGE IV TRAFFIC CONTROL

USE STD 701006 AS NEEDED

INCLUDED IN COST OF "TC&P (SPECIAL)"



STA. 30+00 to STA. 79+50

BARRELS PER STD. 701326 ON 200' CENTERS. INCLUDED IN COST OF "TC&P 701316"

REVISIONS	
NAME	DATE

ILLINOIS DEPARTMENT OF TRANSPORTATION

**STAGE IV CONSTRUCTION TYPICAL SECTIONS**

SCALE: VERT. DATE  
HORIZ.

DRAWN BY  
CHECKED BY

PLDT DATE = 4/7/2005  
PLDT SCALE = 1/8" = 10'-0"  
USER NAME = haggard