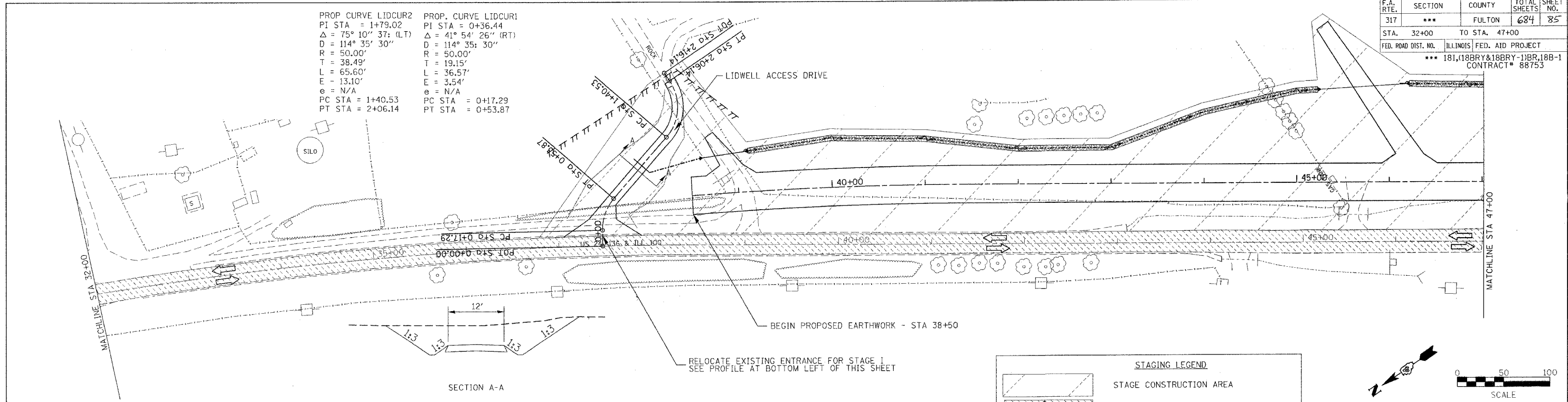


F.A. RTE.	SECTION	COUNTY	TOTAL SHEETS	SHEET NO.
317	***	FULTON	684	85
STA. 32+00		TO STA. 47+00		
FED. ROAD DIST. NO.		ILLINOIS FED. AID PROJECT		
		*** 181,188BRY&188BRY-118R,18B-1		
		CONTRACT# 88753		

PROP. CURVE LIDCUR2
 PI STA = 1+79.02
 $\Delta = 75^\circ 10' 37''$ (LT)
 $D = 114' 35'' 30''$
 $R = 50.00'$
 $T = 38.49'$
 $L = 65.60'$
 $E = 13.10'$
 $e = N/A$
 PC STA = 1+40.53
 PT STA = 2+06.14

PROP. CURVE LIDCUR1
 PI STA = 0+36.44
 $\Delta = 41^\circ 54' 26''$ (RT)
 $D = 114' 35'' 30''$
 $R = 50.00'$
 $T = 19.15'$
 $L = 36.57'$
 $E = 3.54'$
 $e = N/A$
 PC STA = 0+17.29
 PT STA = 0+53.87



PLAN	DATE
BY	
CHECKED	
DATE	
NO.	

PROFILE	DATE
BY	
CHECKED	
DATE	
NO.	

STAGING LEGEND

- STAGE CONSTRUCTION AREA
- TRAFFIC LANE TO BE USED IN THIS STAGE
- TEMPORARY CONCRETE BARRIER W/IMPACT ATTENUATOR
- PORTABLE TEMPORARY BARRIER SYSTEM

US 24 STAGING PLANS
 STAGE I
 STA 32+00 TO 47+00
 DATE **DATE**

