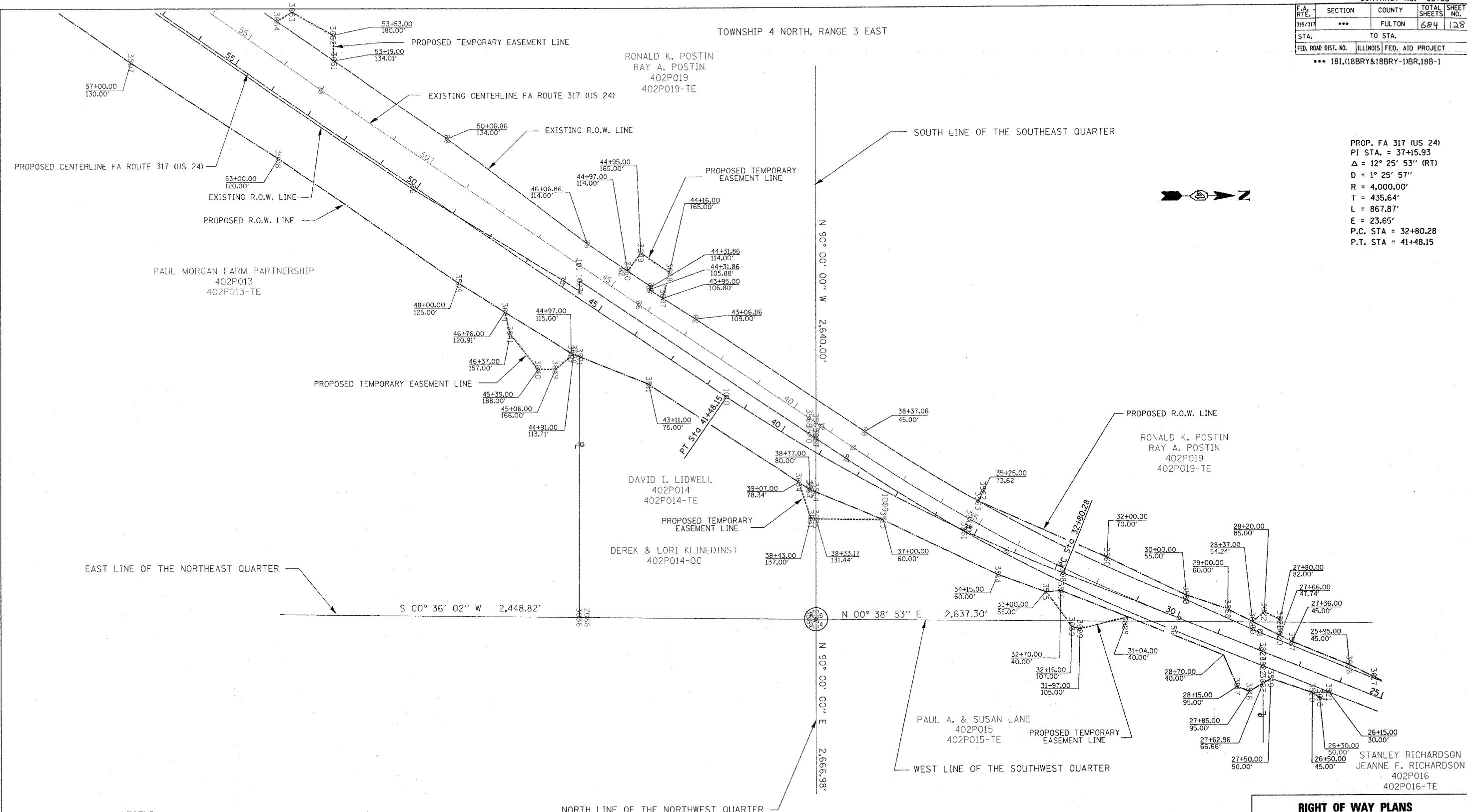
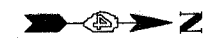


F.A. RTE.	SECTION	COUNTY	TOTAL SHEETS	SHEET NO.
315/317	***	FULTON	604	128
STA.	TO STA.			
FED. ROAD DIST. NO.	ILLINOIS FED. AID PROJECT			
*** 181,18BRY&18BRY-1BR,188-1				

TOWNSHIP 4 NORTH, RANGE 3 EAST



PROP. FA 317 (US 24)
 PI STA. = 37+15.93
 $\Delta = 12^\circ 25' 53''$ (RT)
 $D = 1^\circ 25' 57''$
 $R = 4,000.00'$
 $T = 435.64'$
 $L = 867.87'$
 $E = 23.65'$
 P.C. STA = 32+80.28
 P.T. STA = 41+48.15



APPROVED BY _____ DISTRICT ENGINEER
 DATE _____

DRAWN BY _____
 WRITTEN BY _____
 CHECKED BY _____
 INSPECTED BY _____

LEGEND:

- PROPOSED R.O.W. LINE
- PROPOSED T.E. LINE
- EXISTING R.O.W. LINE

PLATFILE: 143
 FOR OLD R.O.W.
 PLAN FILE: 10
 SHEET(S): 19, 20

RIGHT OF WAY PLANS
 FA ROUTE 317 (US 24)

PROJECT _____ SECTION _____
 STATION 27+00.00 TO _____
 STATION 55+00.00
 COUNTY FULTON
 SCALE 1"=100' SHEET 2 OF 7