

F.A. RTE.	SECTION	COUNTY	TOTAL SHEETS	SHEET NO.
315/317	***	FULTON	604	131
STA.		TO STA.		
FED. ROAD DIST. NO.	ILLINOIS	FED. AID PROJECT		
*** 181,18BRY&18BRY-1BR,18B-1				

TOWNSHIP 4 NORTH, RANGE 3 EAST

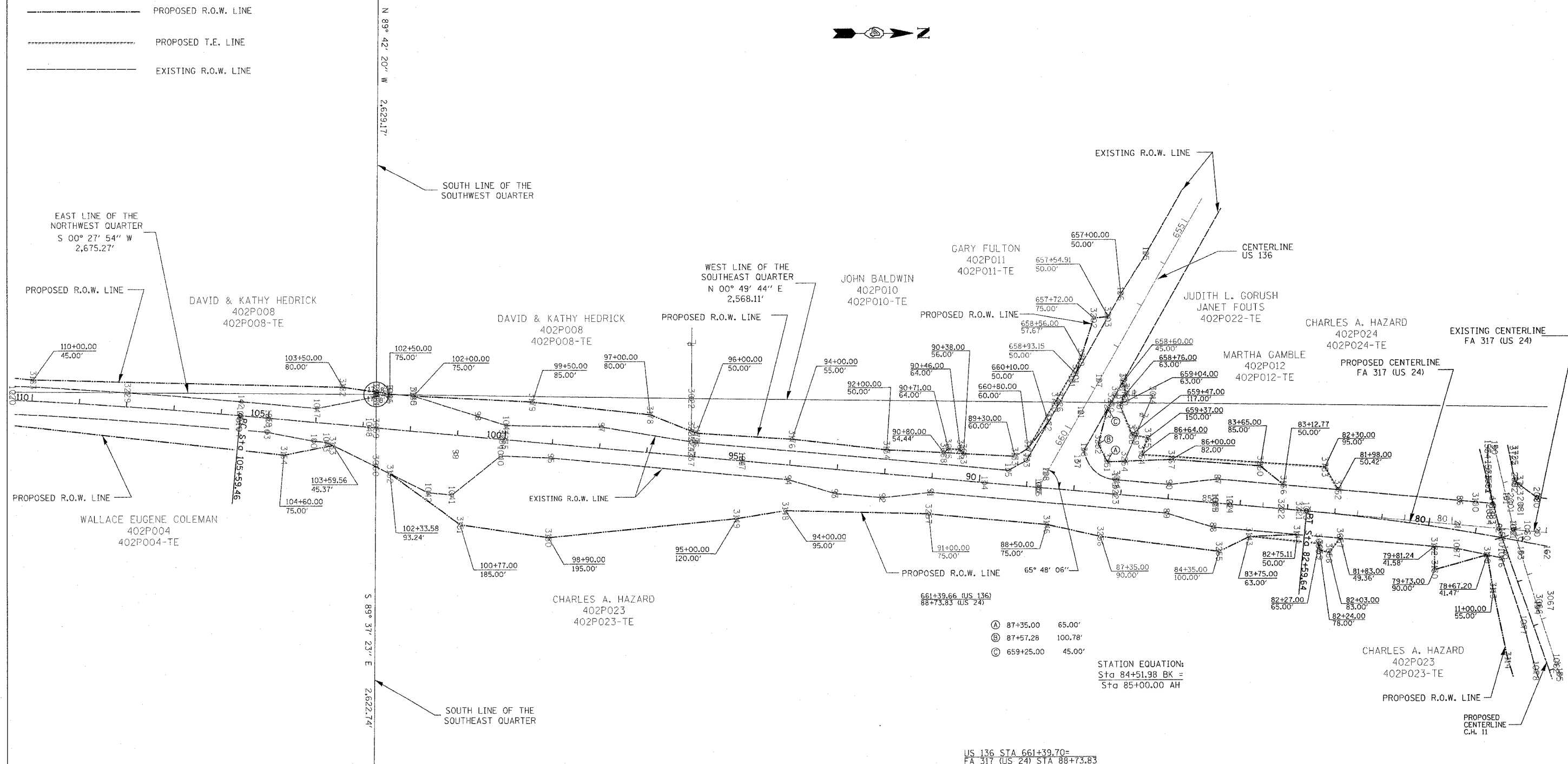
TOWNSHIP 4 NORTH, RANGE 3 EAST

LEGEND:

- PROPOSED R.O.W. LINE
- PROPOSED T.E. LINE
- EXISTING R.O.W. LINE



APPROVED BY _____ DISTRICT ENGINEER
DATE _____



- (A) 87+35.00 65.00'
- (B) 87+57.28 100.78'
- (C) 659+25.00 45.00'

STATION EQUATION:
Sta 84+51.98 BK =
Sta 85+00.00 AH

US 136 STA 661+39.70=
FA 317 (US 24) STA 88+73.83

FOR OLD R.O.W.
PLAN FILE: 10
SHEET(S): 19, 20

PLATFILE: 143

PROP. FA 317 (US 24)
PI STA. = 71+34.68
Δ = 28° 53' 56" (LT)
D = 1° 15' 23"
R = 4,560.00'
T = 1,175.00'
L = 2,299.97'
E = 148.95'
P.C. STA = 59+59.68
P.T. STA = 82+59.64

RIGHT OF WAY PLANS	
FA ROUTE 317 (US 24)	
PROJECT _____	SECTION _____
STATION _____	TO _____
STATION _____	
COUNTY _____	FULTON
SCALE _____	1"=100' SHEET 5 OF 7

PROP. FA 317 (US 24)
PI STA. = 110+42.54
Δ = 4° 52' 16" (LT)
D = 0° 30' 16"
R = 11,357.60'
T = 483.08'
L = 965.57'
E = 10.27'
P.C. STA = 105+59.46
P.T. STA = 115+25.04

DRAWN BY _____
WRITTEN BY _____
CHECKED BY _____
INSPECTED BY _____