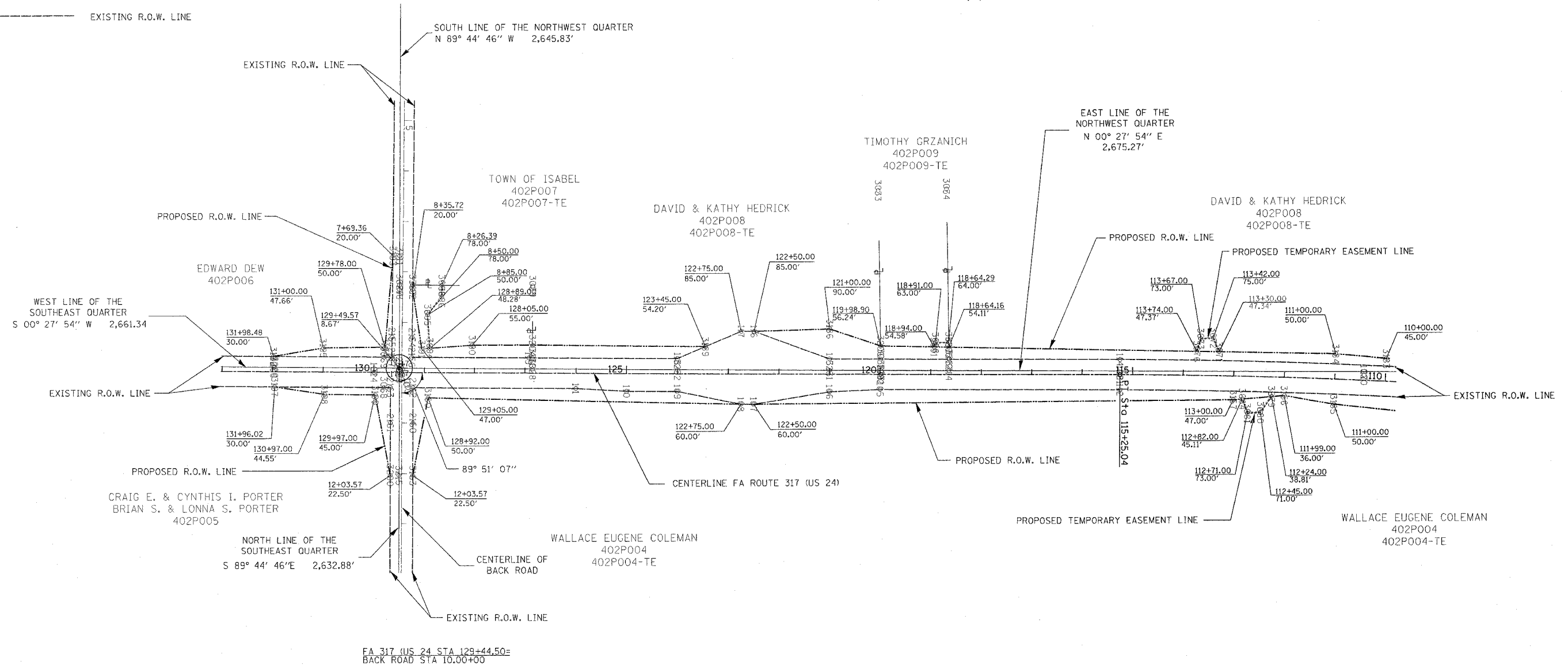


F.A. RTE.	SECTION	COUNTY	TOTAL SHEETS	SHEET NO.
315/317	***	FULTON	684	132
STA.		TO STA.		
FED. ROAD DIST. NO.	ILLINOIS	FED. AID PROJECT		
*** 181,(18BRY&18BRY-1)BR,18B-1				

TOWNSHIP 4 NORTH, RANGE 3 EAST

LEGEND:

- PROPOSED R.O.W. LINE
- PROPOSED T.E. LINE
- EXISTING R.O.W. LINE



APPROVED BY _____ DISTRICT ENGINEER
DATE _____

DRAWN BY _____
WRITTEN BY _____
CHECKED BY _____
INSPECTED BY _____

PROP. FA 317 (US 24)
PI STA. = 110+42.54
Δ = 4° 52' 16" (LT)
D = 0° 30' 16"
R = 11,357.60'
T = 483.08'
L = 965.57'
E = 10.27'
P.C. STA = 105+59.46
P.T. STA = 115+25.04

PLATFILE: 143

FOR OLD R.O.W.
PLAN FILE: 10
SHEET(S): 19, 20

RIGHT OF WAY PLANS
FA ROUTE 317 (US 24)

PROJECT _____ SECTION * _____
STATION 110+00.00 _____ TO _____
STATION 131+98.48 _____
COUNTY FULTON _____
SCALE 1"=100' SHEET 6 OF 7