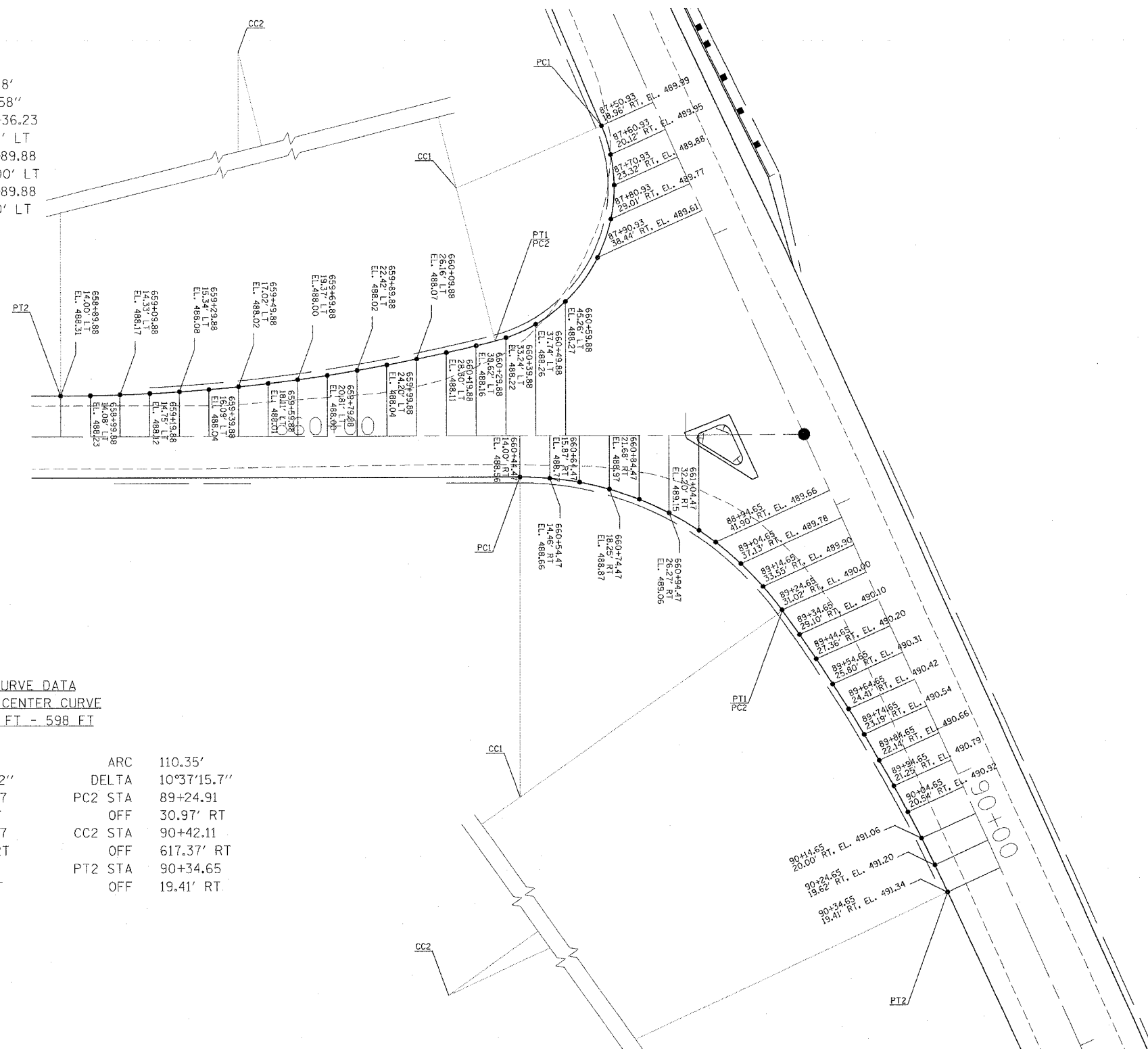


F.A.P. RTE.	SECTION	COUNTY	TOTAL SHEETS	SHEET NO.
317	***	FULTON	684	134
STA.		TO STA.		
FED. ROAD DIST. NO.		ILLINOIS	FED. AID PROJECT	
*** 181,(18BRY&18BRY-1)BR,18B-1				

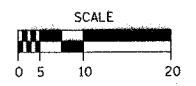
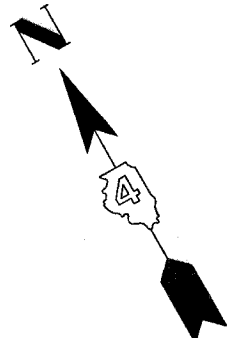
**CURVE DATA**  
**TWO CENTER CURVE**  
**53 FT - 598 FT**

ARC	80.54'	ARC	147.48'
DELTA	98°53'13.2"	DELTA	14°9'58"
PC1 STA	87+50.93	PC2 STA	660+36.23
OFF	18.96' RT	OFF	32.18' LT
CC1 STA	87+49.87	CC2 STA	658+89.88
OFF	71.95' RT	OFF	612.00' LT
PT1 STA	660+36.23	PT2 STA	659+89.88
OFF	32.18' LT	OFF	14.00' LT



**CURVE DATA**  
**TWO CENTER CURVE**  
**108 FT - 598 FT**

ARC	98.90'	ARC	110.35'
DELTA	54°29'54.2"	DELTA	10°37'15.7"
PC1 STA	660+44.47	PC2 STA	89+24.91
OFF	14.00' RT	OFF	30.97' RT
CC1 STA	660+44.47	CC2 STA	90+42.11
OFF	122.00' RT	OFF	617.37' RT
PT1 STA	89+24.91	PT2 STA	90+34.65
OFF	30.97' RT	OFF	19.41' RT



PLOT DATE = 4/7/2005  
 FILE NAME = c:\projects\un24spoon.plt\24intersection.dgn  
 PLOT SCALE = 30.0000' / IN.  
 USER NAME = haggard

REVISIONS		DATE
NAME		

ILLINOIS DEPARTMENT OF TRANSPORTATION	
<b>INTERSECTION DETAIL</b>	
<b>US 24 &amp; US 136 N</b>	
SCALE: VERT.	DRAWN BY
DATE	CHECKED BY