

F.A.P. RTE.	SECTION	COUNTY	TOTAL SHEETS	SHEET NO.
317	***	FULTON	684	135
STA.		TO STA.		
FED. ROAD DIST. NO.		ILLINOIS FED. AID PROJECT		

*** 181,(18BRY&18BRY-1)BR,18B-1

CURVE DATA
50 FT R

ARC 70.71'
DELTA 90°0'0.0"
PC STA 128+84.28
OFF 12.00' RT
CC STA 128+84.28
OFF 62.00' RT
PT STA 9+37.96
OFF 10.00' LT

CURVE DATA
TWO CENTER CURVE
50 FT - 225 FT

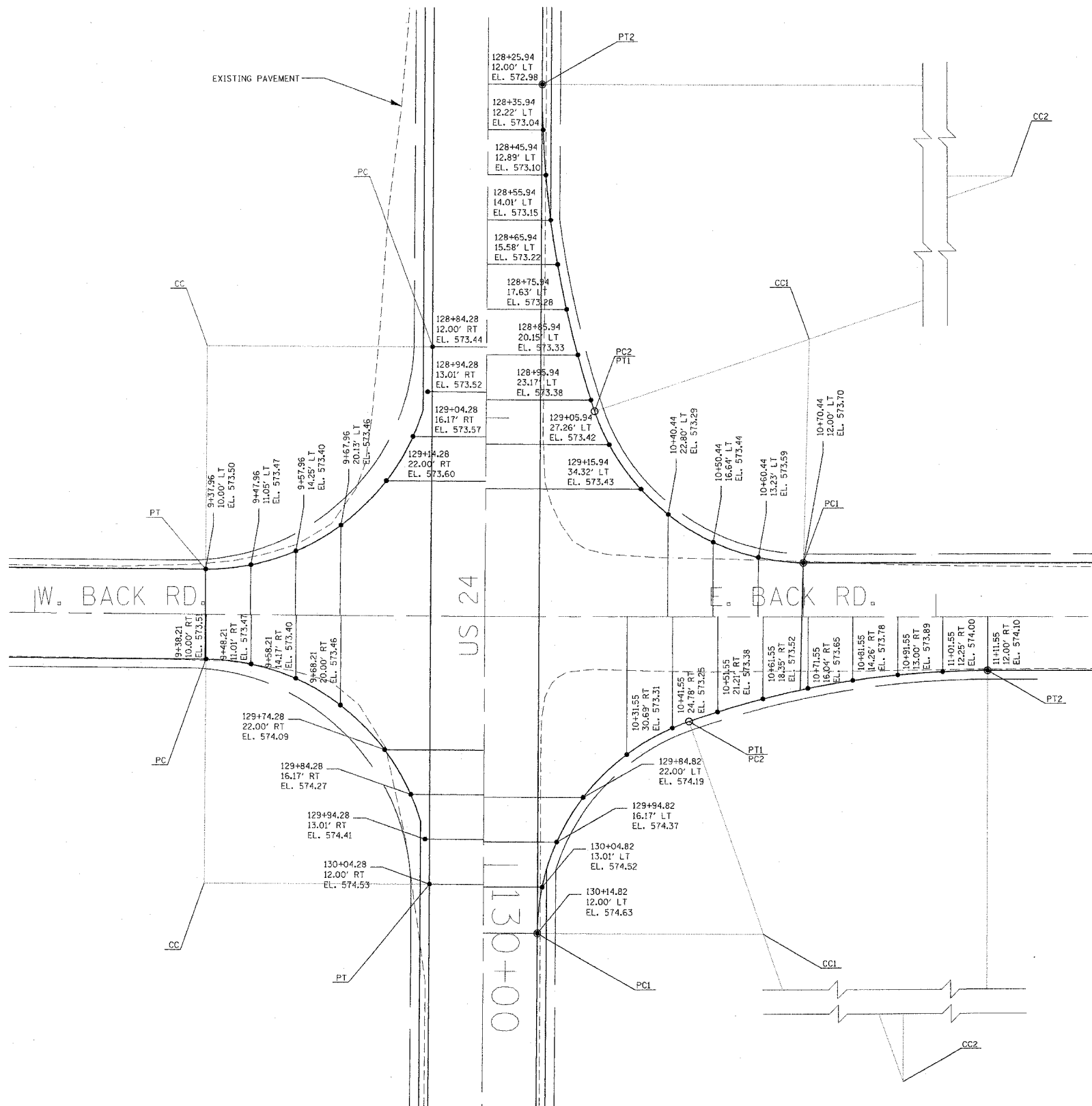
ARC 57.46'	ARC 73.48'
DELTA 70°8'34.4"	DELTA 18°47'42.4"
PC1 STA 10+70.44	PC2 STA 128+98.43
OFF 12.00' LT	OFF 24.00' LT
CC1 STA 128+82.32	CC2 STA 128+25.94
OFF 71.33' LT	OFF 237.00' LT
PT1 STA 128+98.43	PT2 STA 128+25.94
OFF 24.00' LT	OFF 12.00' LT

CURVE DATA
50 FT R

ARC 70.59'
DELTA 89°48'1.1"
PC STA 9+38.21
OFF 10.00' RT
CC STA 130+04.28
OFF 62.00' RT
PT STA 130+04.28
OFF 12.00' RT

CURVE DATA
TWO CENTER CURVE
50 FT - 200 FT

ARC 57.46'	ARC 67.27'
DELTA 70°8'34.4"	DELTA 19°21'45.4"
PC1 STA 130+14.82	PC2 STA 10+45.24
OFF 12.00' LT	OFF 23.31' RT
CC1 STA 130+14.82	CC2 STA 11+11.55
OFF 62.00' LT	OFF 212.00' RT
PT1 STA 10+45.24	PT2 STA 11+11.55
OFF 23.31' RT	OFF 12.00' RT



REVISIONS	
NAME	DATE

ILLINOIS DEPARTMENT OF TRANSPORTATION
INTERSECTION DETAIL
FAP 317 (US 24) &
BACK ROAD
SCALE: VERT. HORIZ.
DATE **DATE** DRAWN BY
CHECKED BY

PLOT DATE = 4/7/2005
FILE NAME = c:\projects\us24\spoon_jh_2\detail\intersection.dgn
PLOT SCALE = 20.00000' / 1" IN.
REFERENCE = #REFS